

Wants to be an Aorida but isn't

# *Protomeдея articulata*

females are sp

## Diagnostic Characters:

Uropods 1-3, spines long and slender

G1 male, segment 2 not posterodistally produced into a lobe

G2, segment 2 not anteriorly flanged

Coxa 5, male, a third deeper than coxa 4

G2, male, palm oblique

Uropod 3, inner ramus two thirds or less the length of the outer ramus

Flat eyes  
Less pigmented

## Illustration:

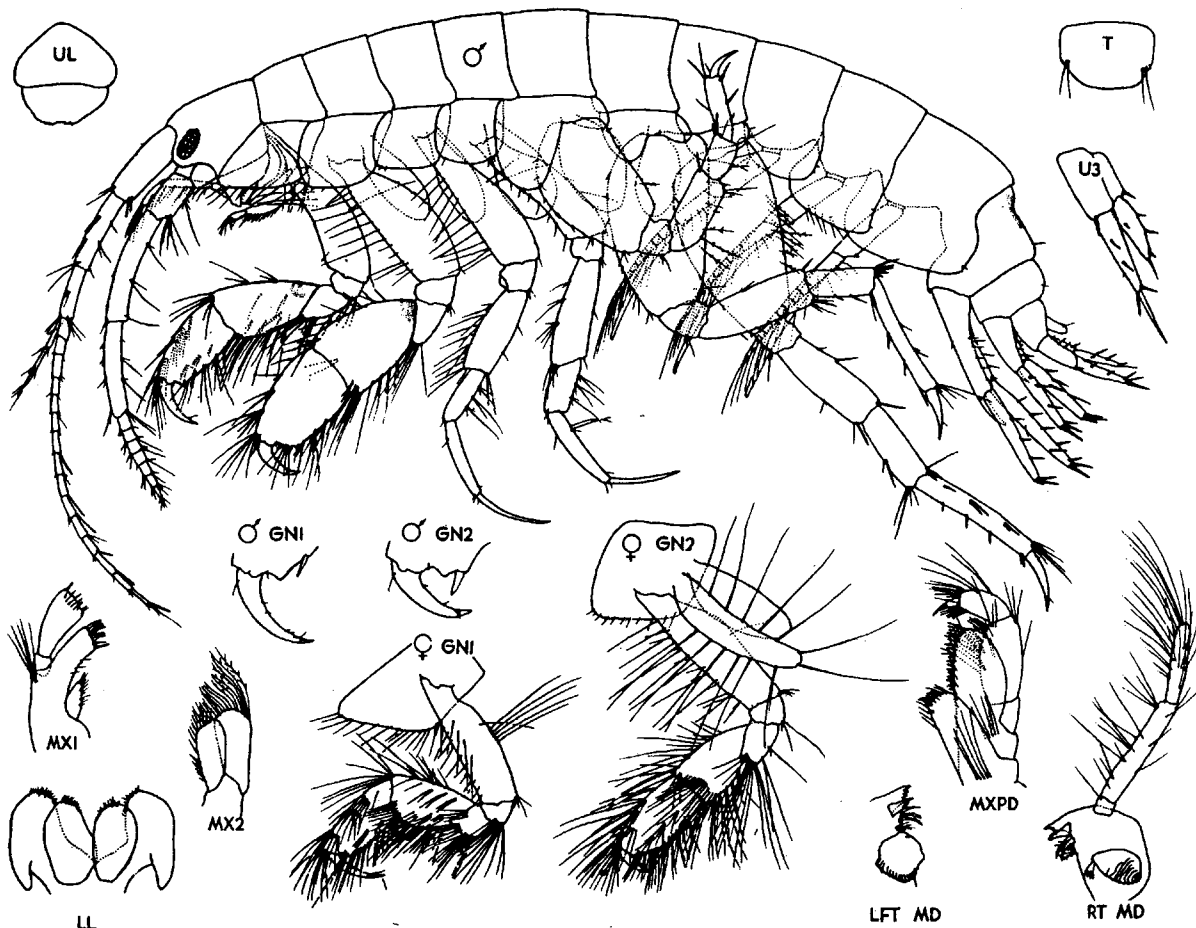


Figure 12. *Protomeдея articulata* Barnard ♂ 4.5 mm, (antenna 1 from a juvenile, 3.5 mm), ♀ 7.0 mm, Clatsop Co., Oregon.