

# *Monocorophium insidiosum*

## Diagnostic Characters:

- Epistome little or not produced
- Rostrum sexually dimorphic; Male rostrum long, tip projecting beyond lateral head lobes
- Pleosome segment 3 w/short posterodorsal tufted process
- P3 & P4 anterior margins of basis strongly setose
- P7 short, A6 w/distal setae
- Antenna 2, seg. 2 small process; large hook on seg. 4
- G1 dactyl short; G2 dactyl w/ 3-4 posterior teeth
- Very setose on P3 & P4; 3 long plumose setae on gill plate 2
- Urosome with distinct lateral tooth

## Illustration:

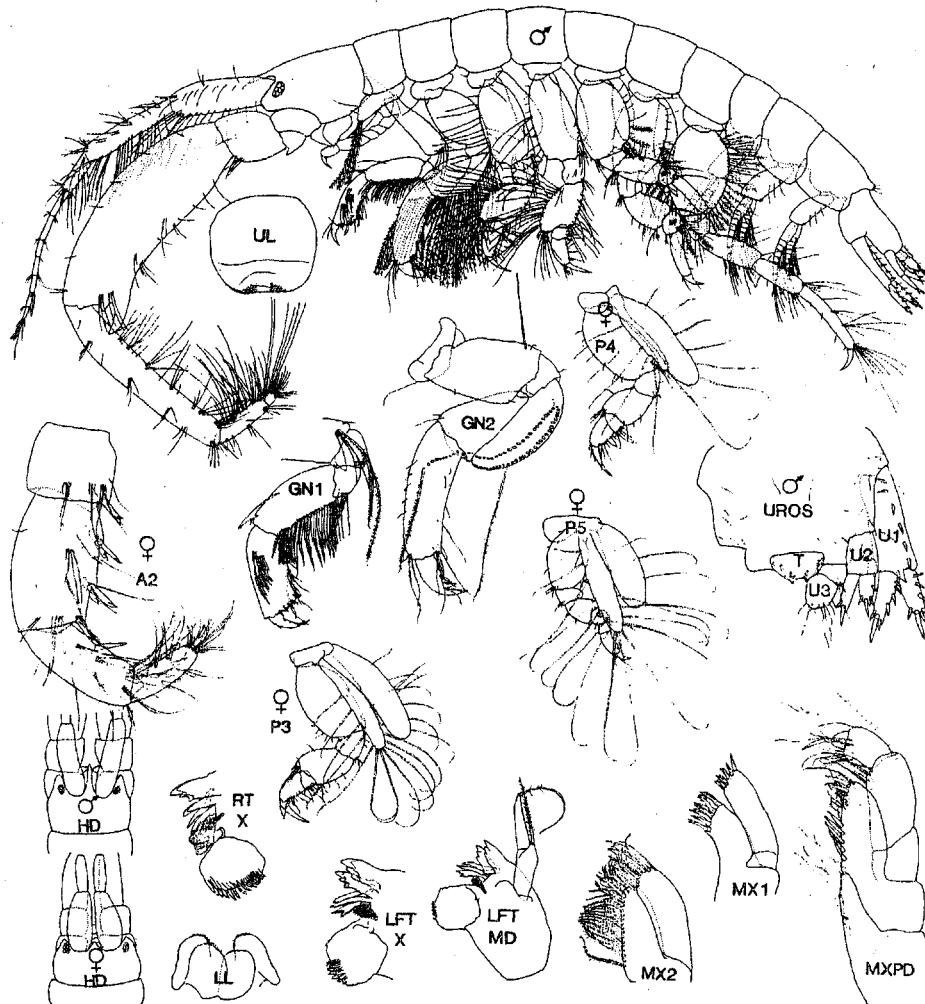


FIG. 27. *Monocorophium insidiosum* (Crawford). Louis Creek lagoon, B. C..  
Male (5.2 mm); female (4.8 mm).