

# *Aoroides spinosa*

## Diagnostic Characters:

- Appendages slender
- A2 flagellum poorly setose
- Mandibular palp segment 2 lacking setae, Segment 3 w/ 2-6 setae
- Maxilliped outer plate teeth strongly serrated, lower teeth w/ 2-3 cusps each
- G1 Coxa slender, A2 front and lateral margins poorly setose, setae reducing in number and length w/age, hind margin weakly setose, A3 front margin nearly bare, A4 tip gradually narrowed, A5 broader than A2, Upper margin bare except for a small distal bundle of short setae.
- G2 palm transverse, dactyl overlapping only by the length of the nail
- Coxa of male w/several long marginal setae.
- P3 and P4, A5 not spinose
- P7, A2 broad, marginal setae long in male
- U3 both rami 2/ 1-3 strong lateral spines.

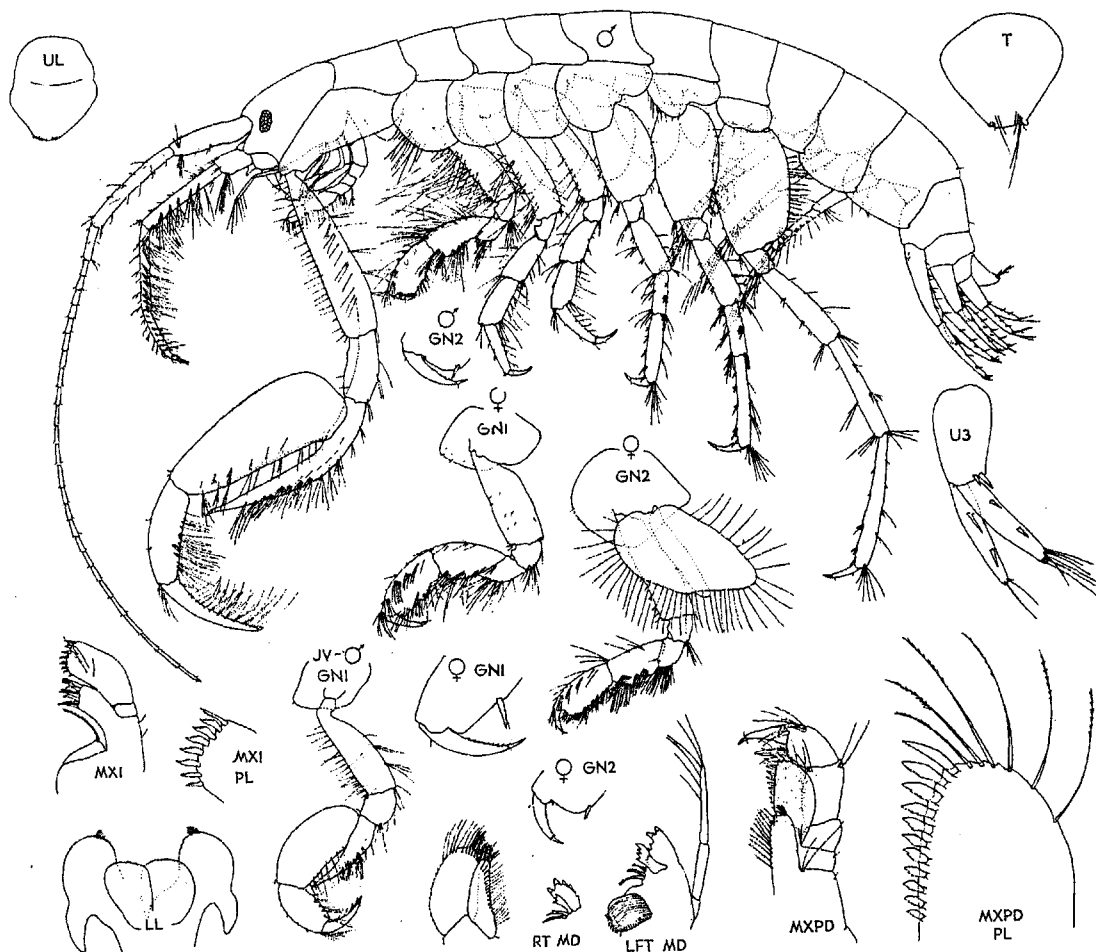


Figure 10. *Aoroides spinosus* n.sp. holotype ♂ 5.5 mm, allotype ♀ 6.0 mm, Willis Beach, Victoria, Vancouver Island, B.C. 19 May 1977

Character	Description
<b>Aoroides spinosus (Male)</b>	
Body Pigmentation	Segments light brown, diffusely speckled
Antennae 1	
Antennae 2	Flagellum poorly setose, not red banded
Eyes	
Maxilla 1	
Maxilla 2	
Maxilliped	Outer plate teeth strongly serrated, lower teeth w/ 2-3 cusps each
Epistome	
Mandible	Palp seg. 2 lacking setae, seg. 3 w/ 2-6 setae
Molar	
Palp	
Gnathopod General	
Gnathopod 1 <u>Coxa</u>	Slender
Gnathopod 1 <u>Basis</u>	Front and lateral margins poorly setose, hind margin weakly setose
Gnathopod 1 <u>Ischium</u>	Front margin nearly bare
Gnathopod 1 <u>Merus</u>	Tip gradually narrowing
Gnathopod 1 <u>Carpus</u>	Broader than basis, upper margin bare except for a small bundle
Gnathopod 1 <u>Propodus</u>	
Gnathopod 1 <u>Dactyl</u>	
Gnathopod 2 <u>Coxa</u>	Several long marginal setae
Gnathopod 2 <u>Basis</u>	
Gnathopod 2 <u>Ischium</u>	
Gnathopod 2 <u>Merus</u>	
Gnathopod 2 <u>Carpus</u>	
Gnathopod 2 <u>Propodus</u>	Palm traverse
Gnathopod 2 <u>Dactyl</u>	Overlapping by length of nail
Coxal Plates	
Pereopod 3	Segment 5 not spinose
Pereopod 4	Segment 5 not spinose
Pereopod 5	
Pereopod 6	
Pereopod 7	Segment 2 broad, marginal setae long
Uropod 1	
Uropod 2	
Uropod 3	Both rami w/ 1-3 strong lateral spines
Telson	

**Comments:**

Epimera 1-3 w/small notch and seta in posterodistal corner, Pleon seg. 3 w/pair of erect setae dorsally

Urosome segment 1 with pair of erect setae but without cusps

Character	Description
<b><i>Aoroides spinosus</i> (Female)</b>	
Body Pigmentation	Segments light brown, diffusely speckled
Antennae 1	
Antennae 2	
Eyes	
Maxilla 1	
Maxilla 2	
Maxilliped	Outer plate teeth strongly serrated, lower teeth w/ 2-3 cusps each
Epistome	
Mandible	Palp seg. 2 lacking setae, seg. 3 w/ 2-6 setae
Molar	
Palp	
Gnathopod General	G1 little larger than G2
Gnathopod 1 <u>Coxa</u>	
Gnathopod 1 <u>Basis</u>	Anteriodistal Margin nearly bare, w/only very short setae
Gnathopod 1 <u>Ischium</u>	
Gnathopod 1 <u>Merus</u>	
Gnathopod 1 <u>Carpus</u>	Few minute setal tufts
Gnathopod 1 <u>Propodus</u>	Strong setal tufts laterally (5-7)
Gnathopod 1 <u>Dactyl</u>	
Gnathopod 2 <u>Coxa</u>	
Gnathopod 2 <u>Basis</u>	
Gnathopod 2 <u>Ischium</u>	
Gnathopod 2 <u>Merus</u>	
Gnathopod 2 <u>Carpus</u>	
Gnathopod 2 <u>Propodus</u>	
Gnathopod 2 <u>Dactyl</u>	
Coxal Plates	
Pereopod 3	
Pereopod 4	
Pereopod 5	
Pereopod 6	
Pereopod 7	
Uropod 1	
Uropod 2	
Uropod 3	Both rami w/ 1-3 strong lateral spines
Telson	

**Comments:**

Epimera 1-3 w/small notch and seta in posterodistal corner, Pleon seg. 3 w/pair of erect setae dorsally

Urosome segment 1 with pair of erect setae but without cusps