

Aoroides intermedius

Diagnostic Characters:

- A2 strongly setose
- M1 palp, teeth moderately to strongly serrated
- Maxilliped, outer plate teeth weakly serrated lower teeth w/ 0-2 cusps each
- G1 coxa slender, A2 setose, Hind Margin bare, A3 front setose, A4 tip abruptly narrowed, A5 not broader than A2, Upper margin lined by 5-7 bundles of long setae.
- G2, palm slightly oblique, dactyl overlapping by more than the length of the nail, coxa w/few short setae only.
- P3 & P4, A5 not spinose
- P7, A2 broad, marginal setae short
- U3 outer ramus usually lacking lateral spines, but occasionally w/ 1-2 spines, inner ramus w/ 0-2 spines, strong lateral spines

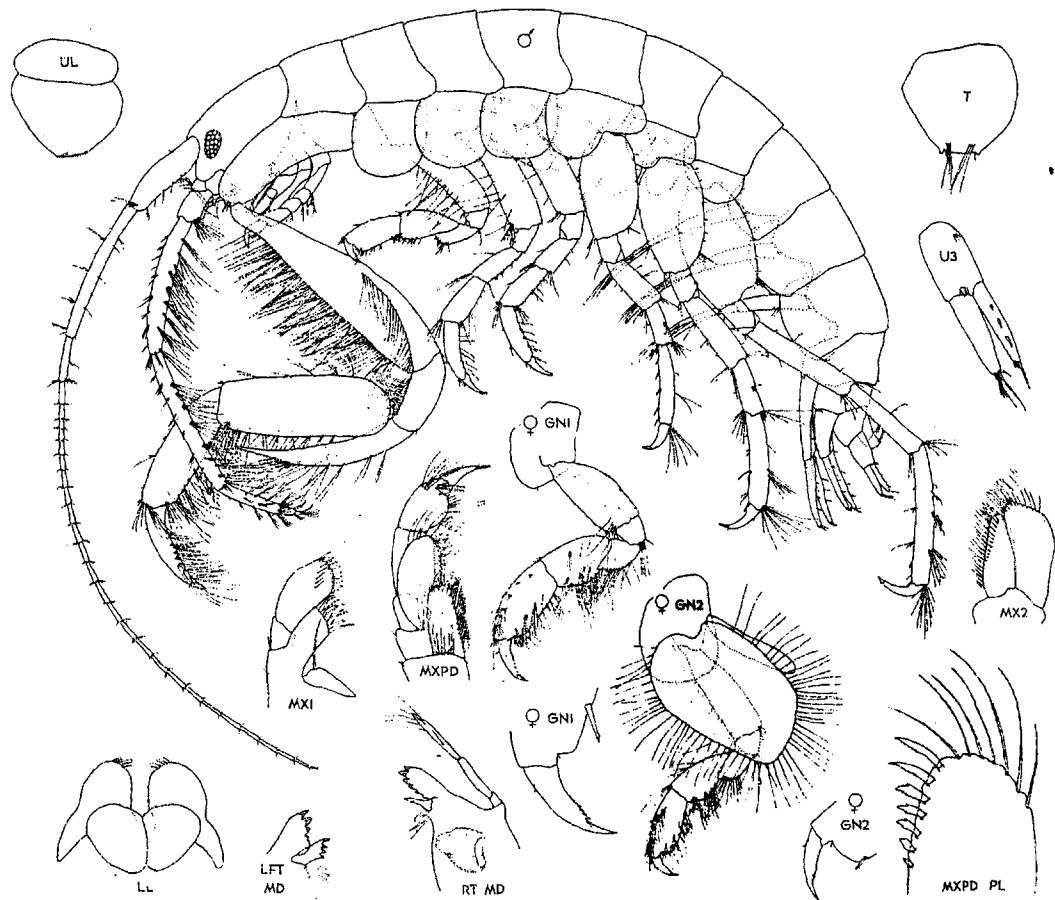


Figure 5. *Aoroides intermedius* n.sp. holotype ♂ 5.0 mm, allotype ♀ 5.5 mm, Haines Is., Barkley Sound, Vancouver Is., B.C. 8 Aug. 1975

| Character | Description |
|------------------------------------|---|
| Aoroides intermedius (Male) | |
| Body Pigmentation | Speckeled w/no concentration in hind corners of seg., Evenly spaced spots |
| Antennae 1 | |
| Antennae 2 | Flagellum strongly setose, Flagellum seg. 1 red banded |
| Eyes | |
| Maxilla 1 | Palp teeth moderately to strongly serrated |
| Maxilla 2 | |
| Maxilliped | Outer plate teeth weakly serrated, lower teeth with 0 - 2 cusps each |
| Epistome | |
| Mandible | |
| Molar | |
| Palp | |
| Gnathopod General | |
| Gnathopod 1 <u>Coxa</u> | Slender |
| Gnathopod 1 <u>Basis</u> | Front and lateral margins densely setose, hind margin bare |
| Gnathopod 1 <u>Ischium</u> | Front margin densely setose |
| Gnathopod 1 <u>Merus</u> | Tip abruptly narrowed |
| Gnathopod 1 <u>Carpus</u> | Not broader than Basis, upper margin lined by 5 - 7 bundles of setae |
| Gnathopod 1 <u>Propodus</u> | |
| Gnathopod 1 <u>Dactyl</u> | |
| Gnathopod 2 <u>Coxa</u> | With few short setae only |
| Gnathopod 2 <u>Basis</u> | |
| Gnathopod 2 <u>Ischium</u> | |
| Gnathopod 2 <u>Merus</u> | |
| Gnathopod 2 <u>Carpus</u> | |
| Gnathopod 2 <u>Propodus</u> | Palm slightly oblique |
| Gnathopod 2 <u>Dactyl</u> | Overlapping by more than length of the nail |
| Coxal Plates | |
| Pereopod 3 | Segment 5 not spinose |
| Pereopod 4 | Segment 5 not spinose |
| Pereopod 5 | |
| Pereopod 6 | |
| Pereopod 7 | Basis broad, marginal setae short |
| Uropod 1 | |
| Uropod 2 | |
| Uropod 3 | Outer ramus lacking spines |
| Telson | |

Comments:

Epimera 1-3 w/small notch and seta in posterodistal corner, Pleon seg. 3 w/pair of erect setae dorsally

Urosome segment 1 with pair of erect setae but without cusps

| Character | Description |
|-----------|-------------|
|-----------|-------------|

***Aoroides intermedius* (Female)**

| | |
|-----------------------------|--|
| Body Pigmentation | Speckled w/no concentration in hind corners of seg., Evenly spaced spots |
| Antennae 1 | |
| Antennae 2 | |
| Eyes | |
| Maxilla 1 | Palp teeth moderately to strongly serrated |
| Maxilla 2 | |
| Maxilliped | Outer plate teeth weakly serrated, lower teeth with 0 - 2 cusps each |
| Epistome | |
| Mandible | |
| Molar | |
| Palp | |
| Gnathopod General | G1 slightly larger than G2 |
| Gnathopod 1 <u>Coxa</u> | |
| Gnathopod 1 <u>Basis</u> | Anterior distal margin bearing a group of long setae |
| Gnathopod 1 <u>Ischium</u> | |
| Gnathopod 1 <u>Merus</u> | Not produced |
| Gnathopod 1 <u>Carpus</u> | Bearing minute and few lateral setae |
| Gnathopod 1 <u>Propodus</u> | Moderately setose (poorly) w/minute and few lateral setae |
| Gnathopod 1 <u>Dactyl</u> | Toothed |
| Gnathopod 2 <u>Coxa</u> | |
| Gnathopod 2 <u>Basis</u> | |
| Gnathopod 2 <u>Ischium</u> | |
| Gnathopod 2 <u>Merus</u> | |
| Gnathopod 2 <u>Carpus</u> | Very few minute lateral setae |
| Gnathopod 2 <u>Propodus</u> | More lateral setae than G1 propodus |
| Gnathopod 2 <u>Dactyl</u> | Toothed |
| Coxal Plates | |
| Pereopod 3 | |
| Pereopod 4 | |
| Pereopod 5 | |
| Pereopod 6 | |
| Pereopod 7 | |
| Uropod 1 | |
| Uropod 2 | |
| Uropod 3 | Outer ramus lacking spines |
| Telson | |

Comments:

Epimera 1-3 w/small notch and seta in posterodistal corner, Pleon seg. 3 w/pair of erect setae dorsally

Urosome segment 1 with pair of erect setae but without cusps