

Ampithoe valida

Diagnostic Characters:

- A1 peduncle 1 setose but lacking ventral spines
- A2 lacking dense plumose setae
- G1, male, front margins of segment 5 & 6 bearing long overhanging simple setae
- G1 segment 5 longer than segment 6
- G2, male, palm with quadrate tubercle, hind margin not produced
- Coxae 1-4 with group of long setae on lower hind margin
- G2, male, palm transverse
- Epimeron 3, faintly notched

Illustration:

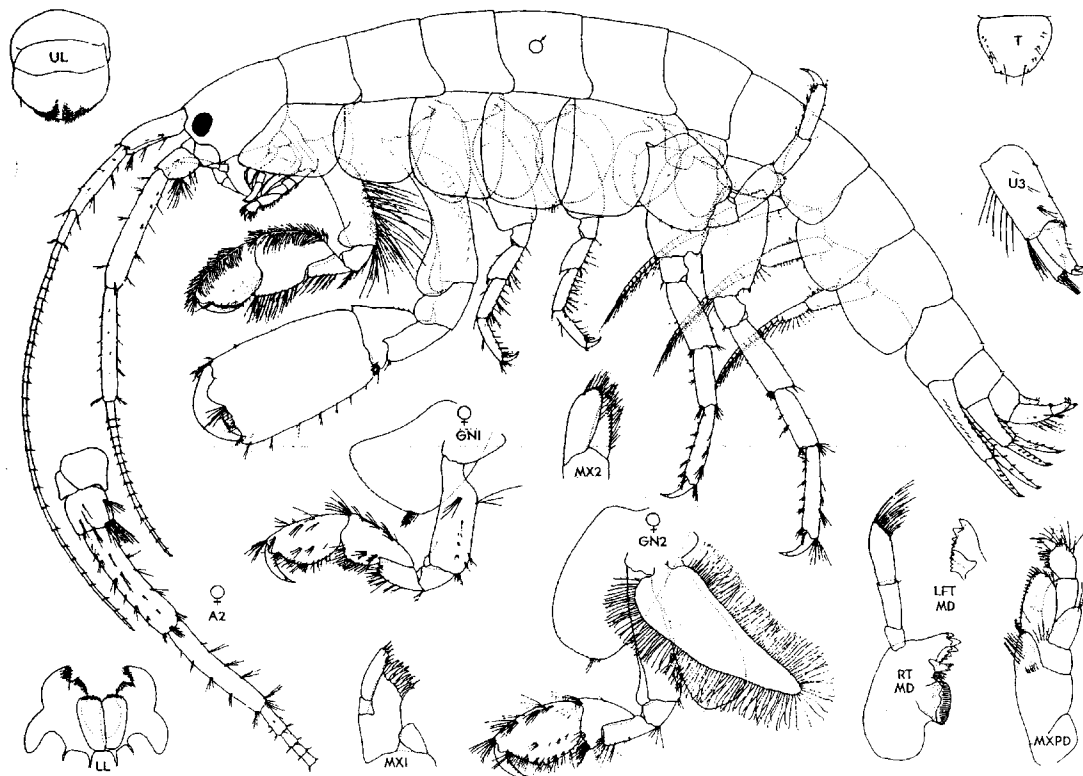


Figure 3. *Ampithoe valida* Smith ♂ 12.0 mm, Sarita Bay, Barkley Sound, Vancouver Is., B.C. 2 July 1977;
12.0 mm Brady's Beach, Barkley Sound, Vancouver Is., B.C. 31 July 1975