

Figure 1. *Byblis veleronis*

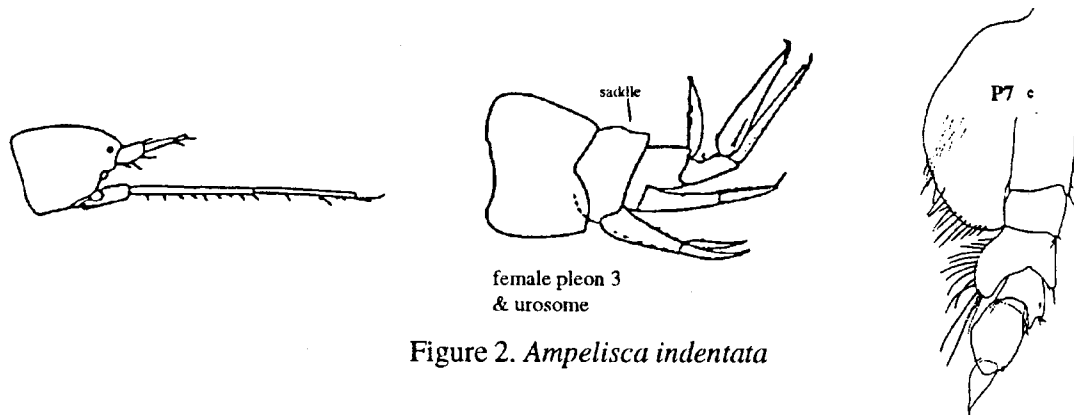


Figure 2. *Ampelisca indentata*

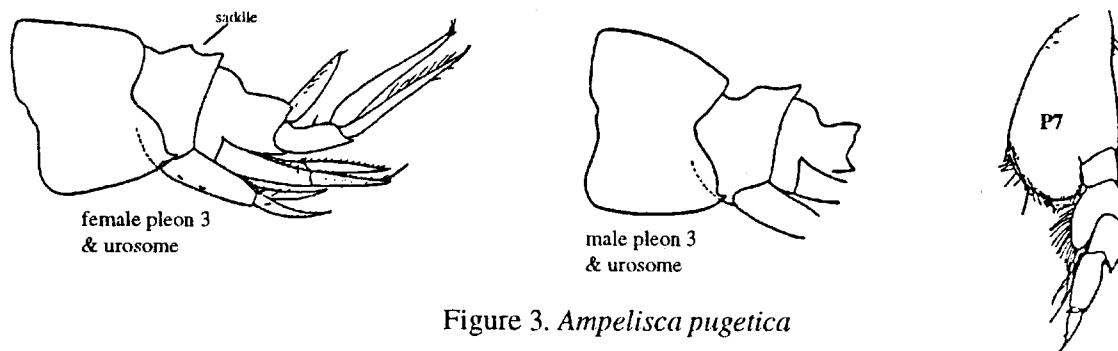


Figure 3. *Ampelisca pugetica*

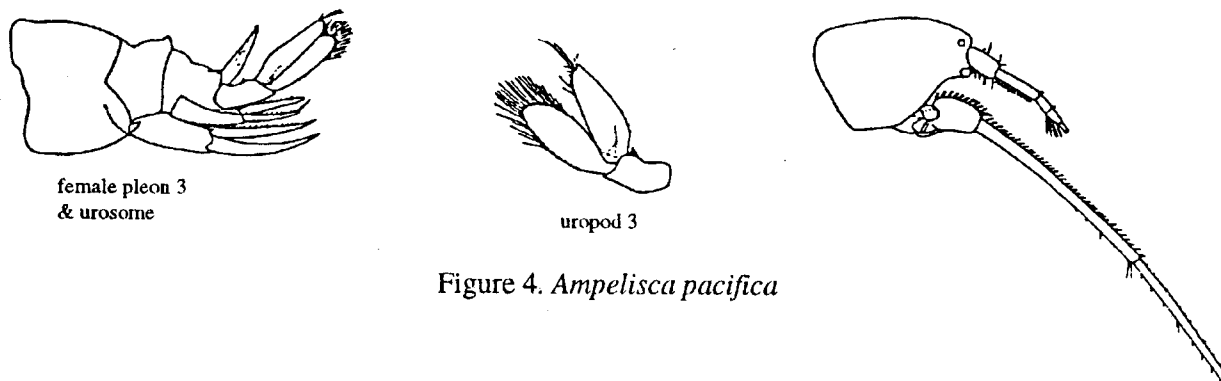


Figure 4. *Ampelisca pacifica*

Figure references: Except where noted, all whole animal figures are from J.J. Dickinson (1982), and all other figures are from J. L. Barnard (1954).

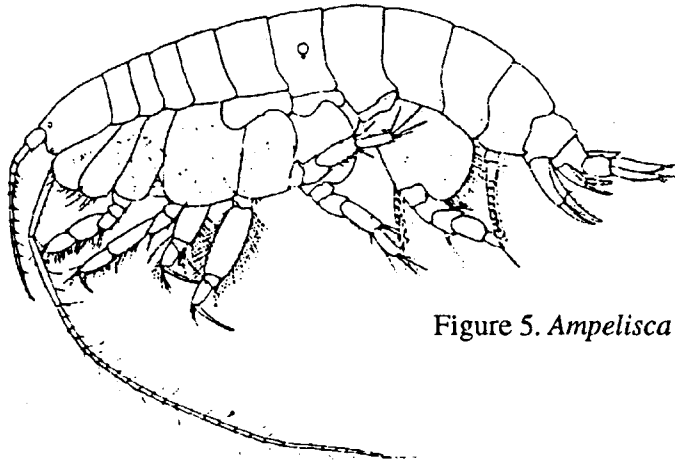
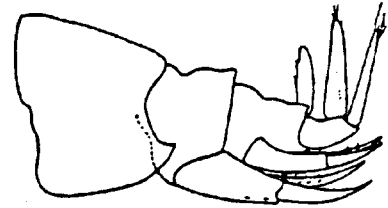
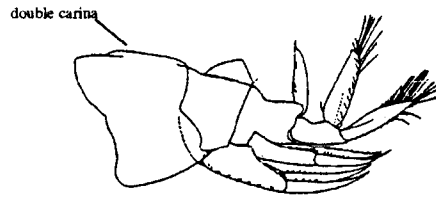


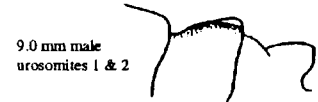
Figure 5. *Ampelisca hancocki*



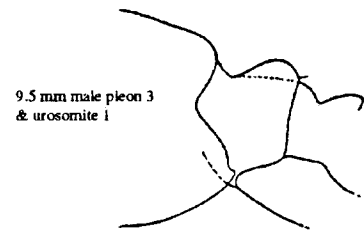
female pleon 3  
& urosome



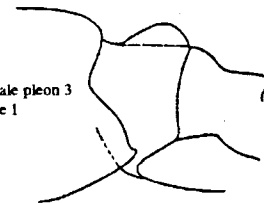
female pleon 3  
& urosome



9.0 mm male  
urosomites 1 & 2



9.5 mm male pleon 3  
& urosomite 1



13 mm female pleon 3  
& urosomite 1

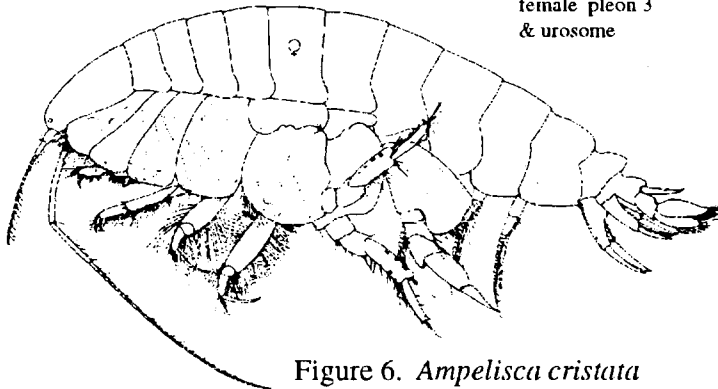


Figure 6. *Ampelisca cristata*

Figure 7. *Ampelisca cristata*  
*microdentata*

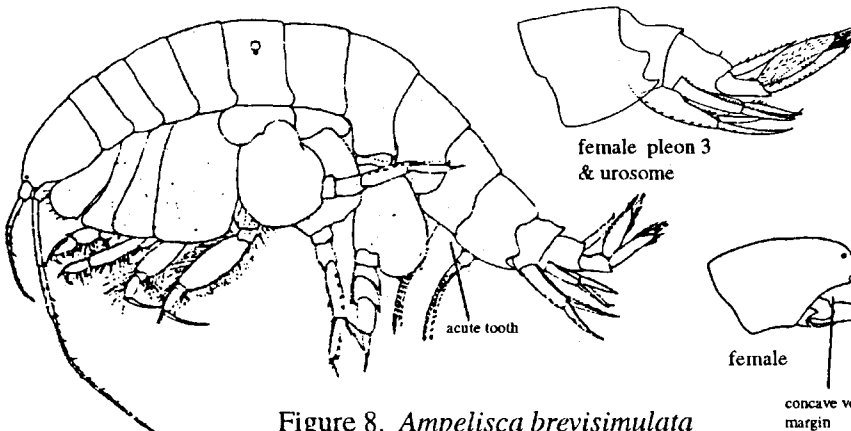


Figure 8. *Ampelisca brevisimulata*

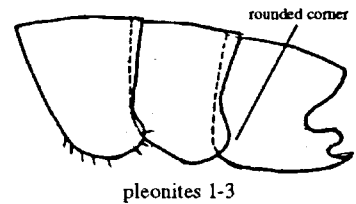
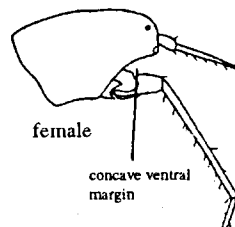


Figure 9. *Ampelisca nr.*  
*brevisimulata*



female  
concave ventral  
margin

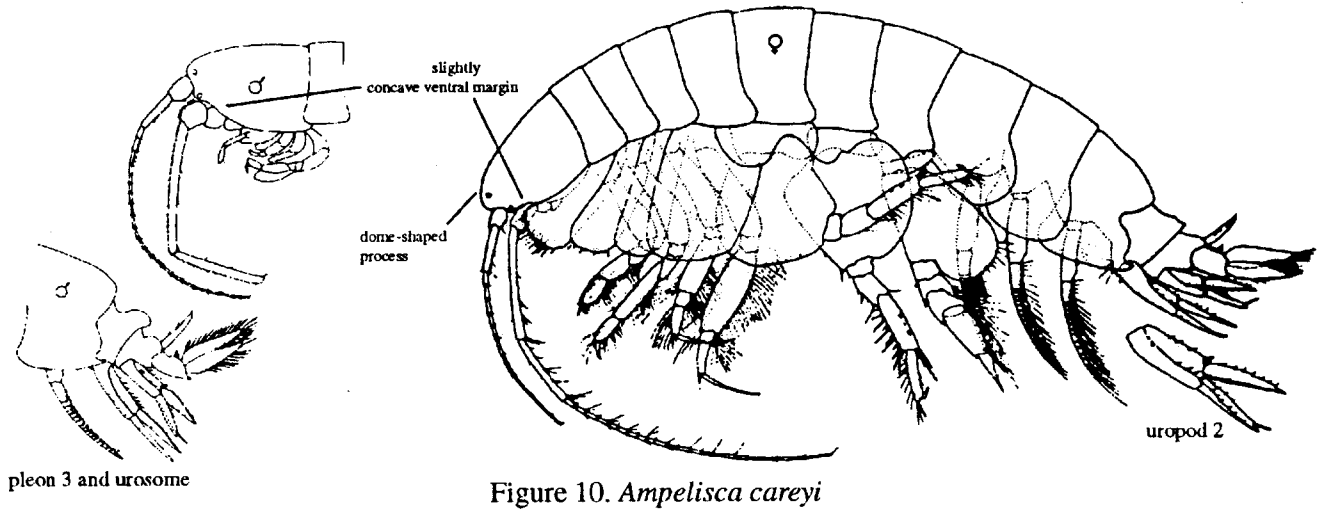


Figure 10. *Ampelisca careyi*

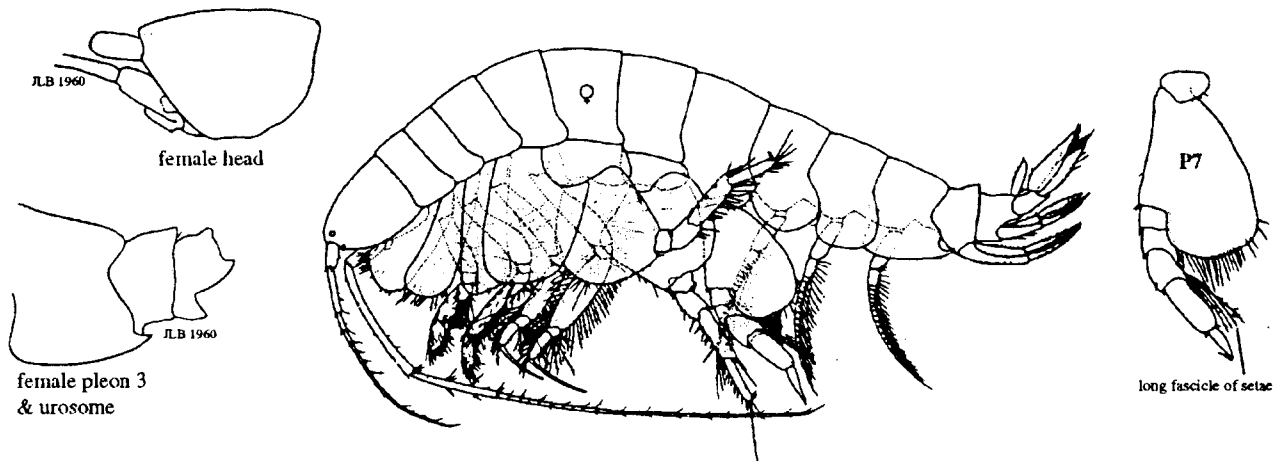


Figure 11. *Ampelisca unsocalae*

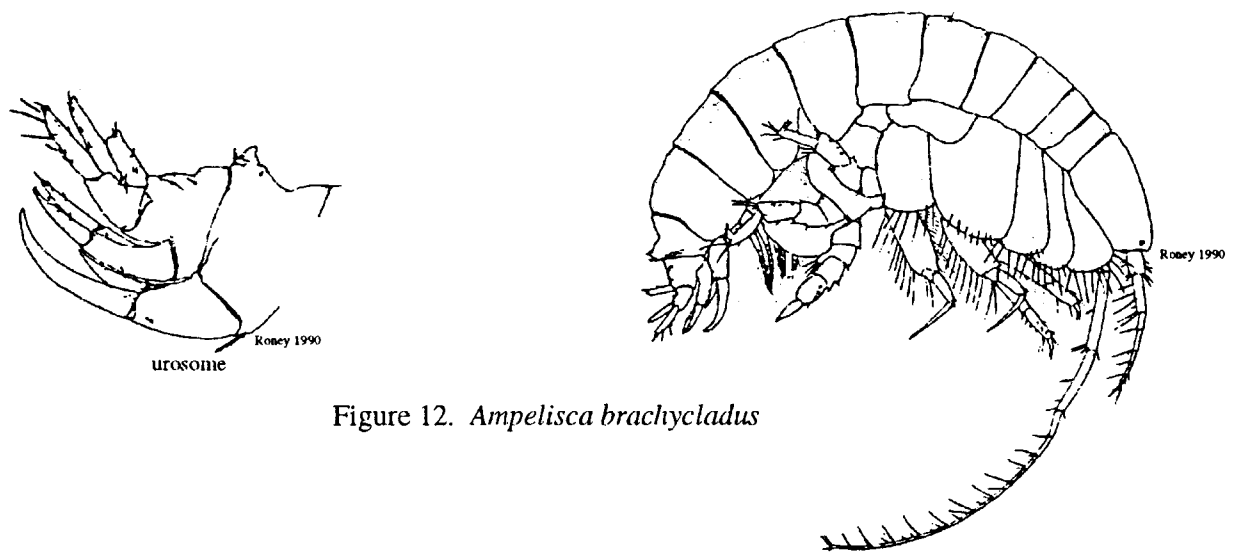


Figure 12. *Ampelisca brachycladus*

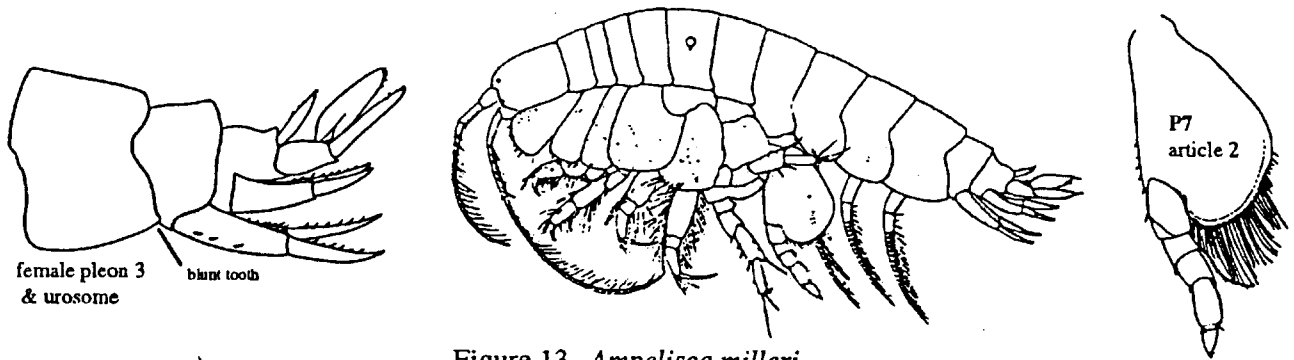


Figure 13. *Ampelisca milleri*

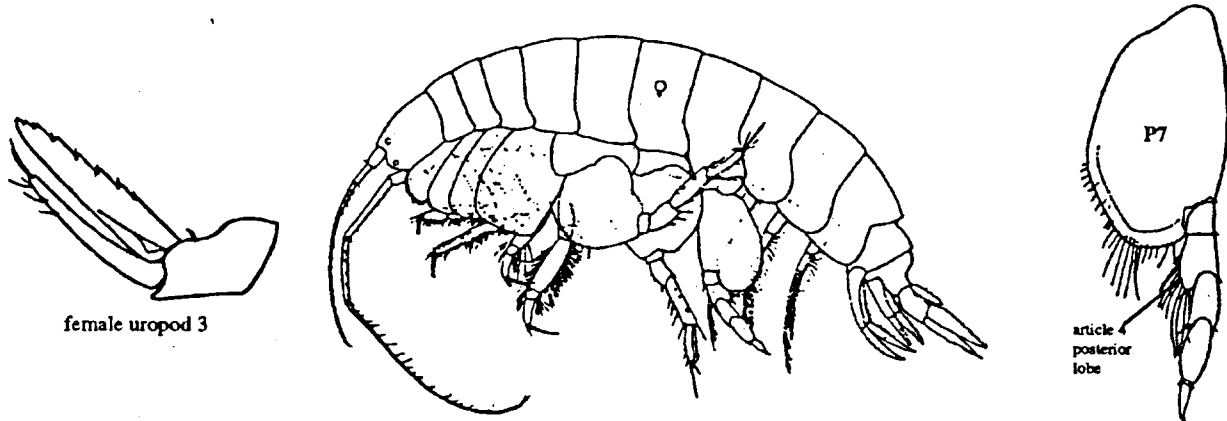


Figure 14. *Ampelisca lobata*

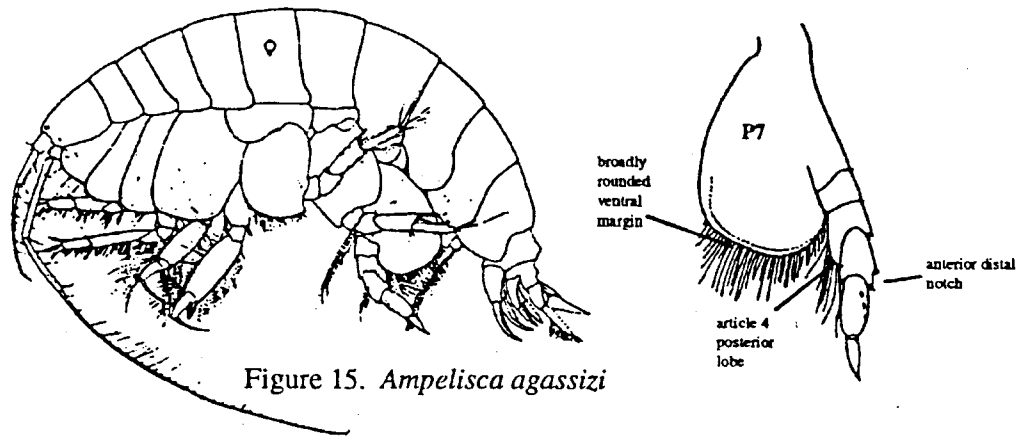


Figure 15. *Ampelisca agassizi*

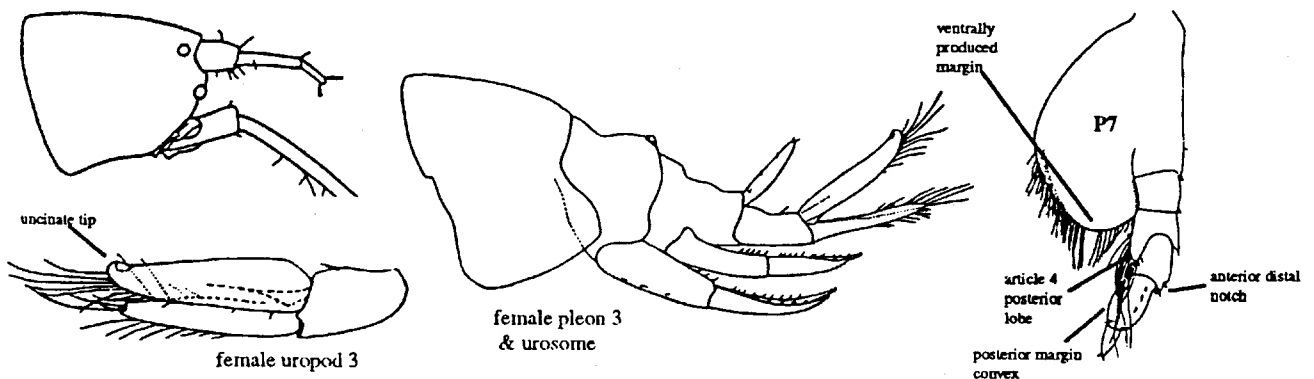


Figure 16. *Ampelisca romigi*