

## *Byblis millsii*

### Diagnostic Characters:

- Coxae 1-3 strongly serrated
- Posterior lobe article 2 of P7 strongly expanded and oblique
- Eyes well developed
- Rami of U1 subequal
- Dactyl of P7 reduced to a spine
- A1 just reaching end of A2 peduncle
- Dactyls of P5 and P6 simple
- P7 anterior basis setose near its junction with segment 3

### Illustration:

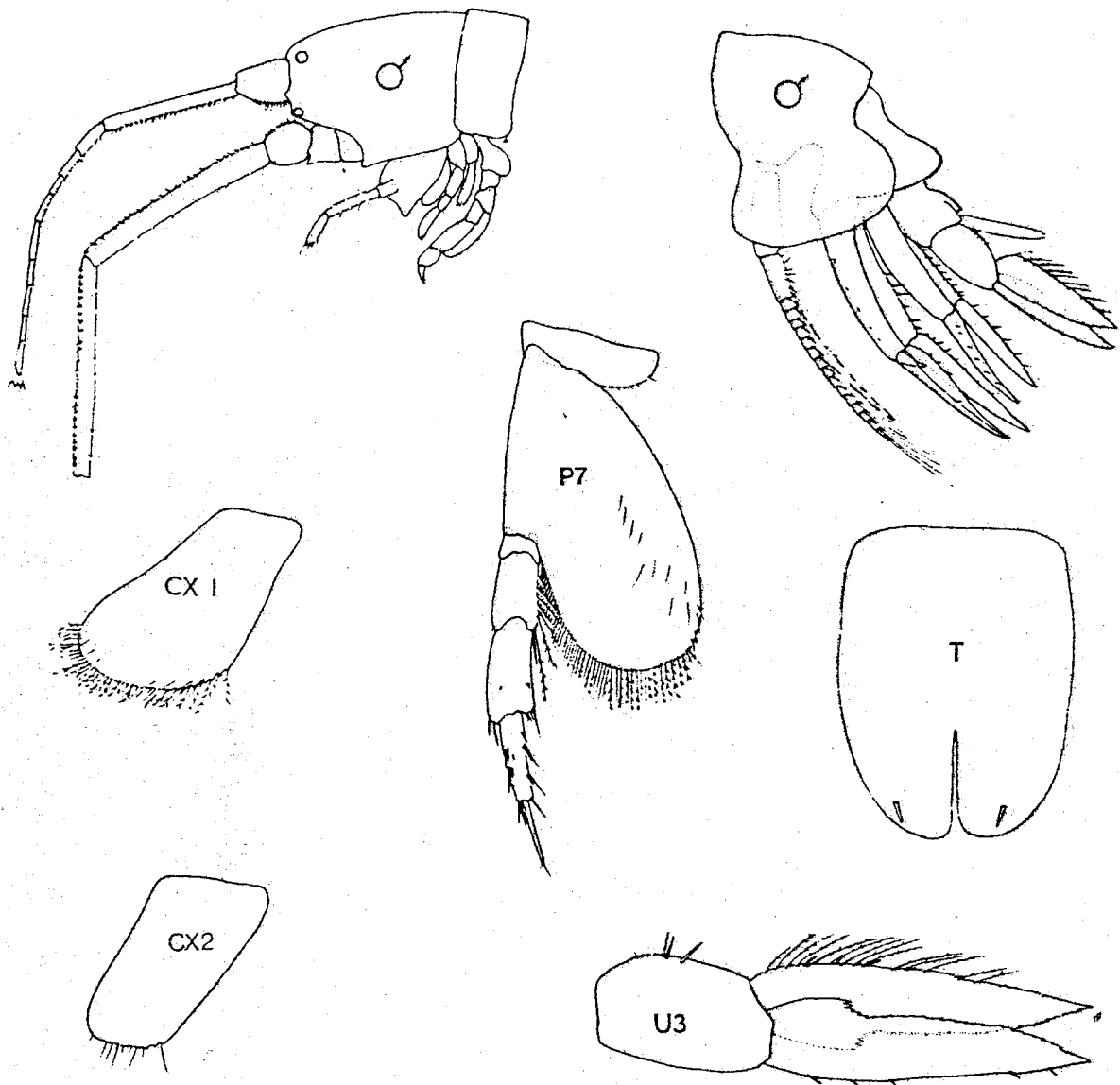


Figure 7. *Byblis millsii* n. sp. Neah Bay, Washington. Bousfield 1966 stn. W39. allotype ♂ 10 mm, pelagic stage adult.

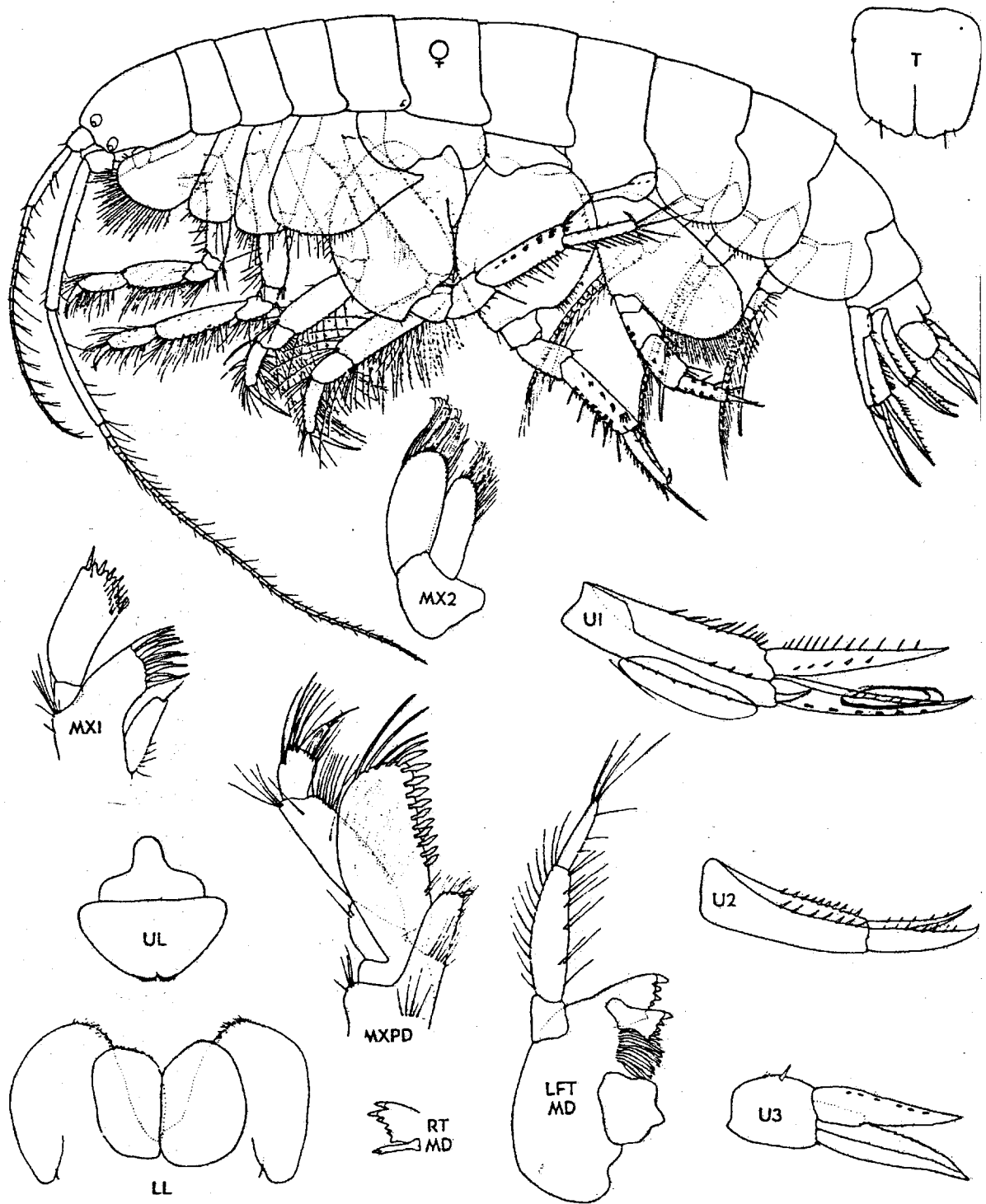


Figure 6. *Byblis millsi* n. sp. Neah Bay, Washington. Bousfield 1966 stn. W39. holotype ♀ 10 mm.