

Byblis barbarensis

Diagnostic Characters:

- Eyes absent
- No tooth on posterior corner of E3
- A2 longer than body
- A1: flagellum with 17 articles
- Inner ramus of U3 serrate
- A1 as short as A2 puduncle
- Cleft of Telson halfway or more

Illustration:

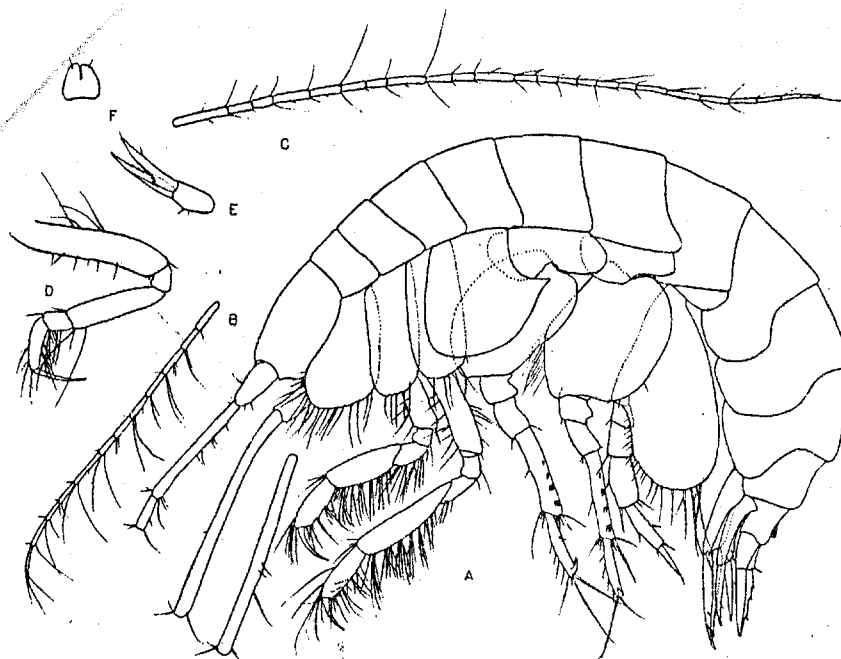


Fig. 11. *Byblis barbarensis* n. sp. Female, 10 mm, sta. 3731. A, lateral view of animal; B, antenna 1, flagellum; C, antenna 2, flagellum; D, peracopod 1; E, uropod 3; F, telson.