

Ampelisca plumosa

Diagnostic Characters:

- Eyes absent
- A1 short, not extending beyond A2 peduncle
- Outer ramus of U2 with subapical spine
- Basal lobe of P7 short, only reaching end of segment 3
- Pleon 3 without acute tooth on posterior corner

Illustration:

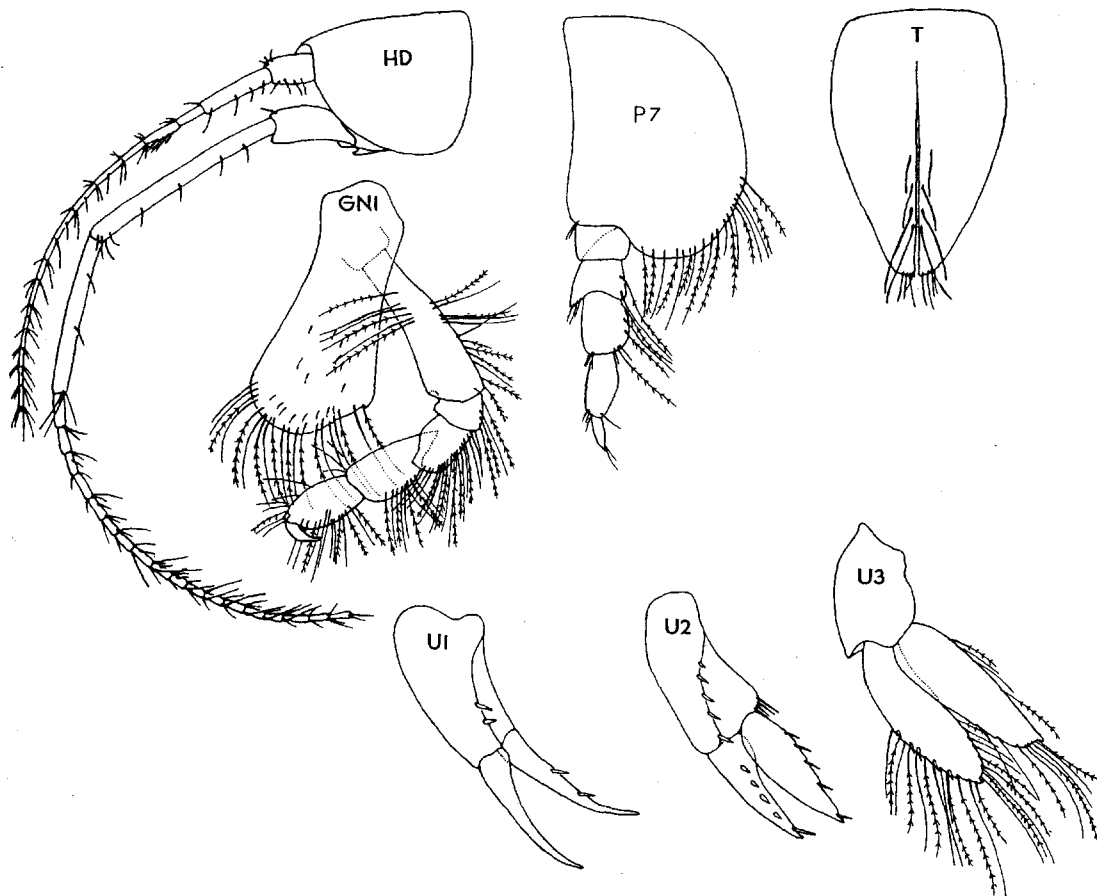


Figure 3. *Ampelisca plumosa* Holmes. North Coronado Island, California. ♂ holotype, 13 mm, subad

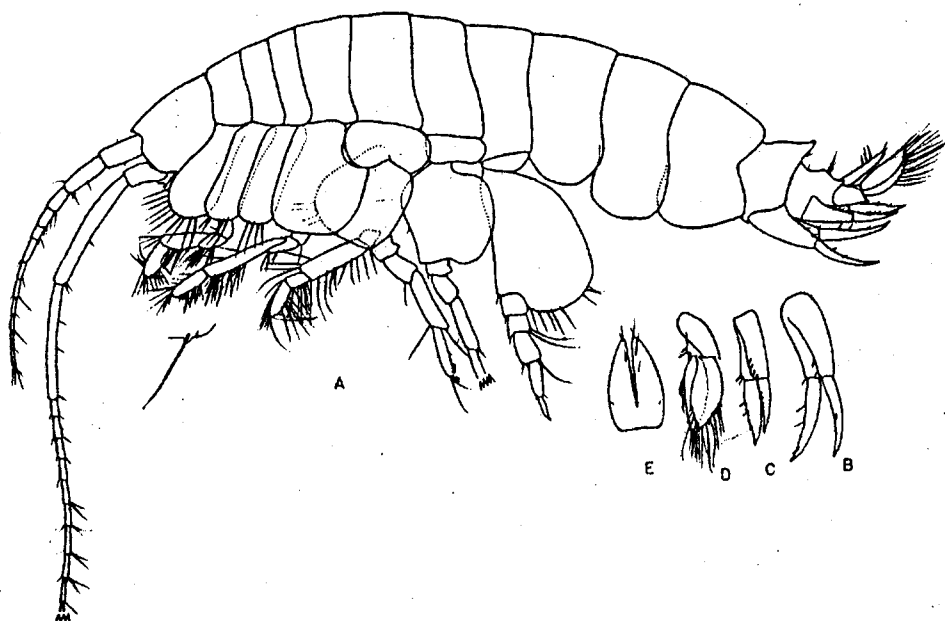


Fig. 8. *Ampelisca plumosa* Holmes. Sex?, 6 mm, sta. 5938. A, lateral view of animal, below is lower corner of coxa 1, 2; B, C, D, uropods 1, 2, 3; E, telson.