

Trichobranchidae sp. LA1

Material examined:

Bight '03 Station 4001 792m depth 6 specimens

Bight '03 Station 4392 610m depth 1 specimen

Diagnostic characters:

4 prs. of branchiae (8 total) all pectinate with cirriform tip arranged as illustrated below with 4 across and then 2 pr. centered below those and another 2 pr. centered below those.

17 thoracic setigers

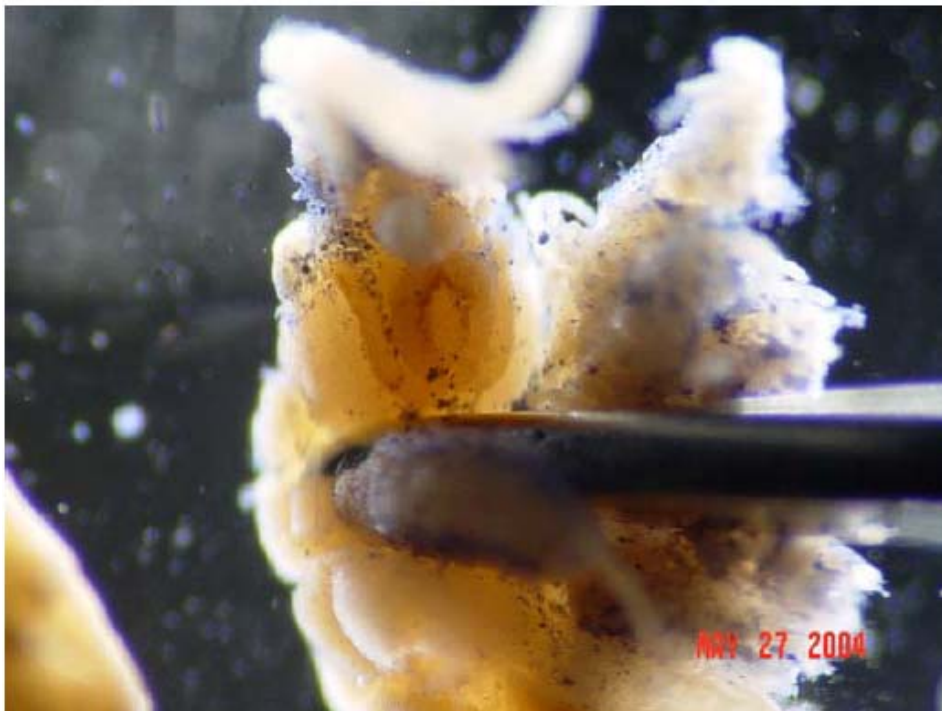
Uncini start on setiger 6 and are long shafted hooks with the main fang surmounted by crest of smaller teeth

Notosetae smooth and straight with long tips slightly bent- limbate capillaries

No lateral lappets but the 1st 4 setigers are somewhat inflated

Unusual looped or sinuous shaped gland on back of prostomium underneath branchia





Unusual looped gland
(Just above forceps)