



# City of San Francisco Voucher Sheet

Rev. 18 Jan 01 djn

Species: *Polycirrus* sp. I  
 Authority: Banse, 1980  
 Common Synonyms:

Voucher #: P1022  
 Taxa: Polychaeta: Terebellidae  
 Date: 18 Jan 01  
 By: Dot Norris  
 Species Code: *Polycirrus*\_sp\_I

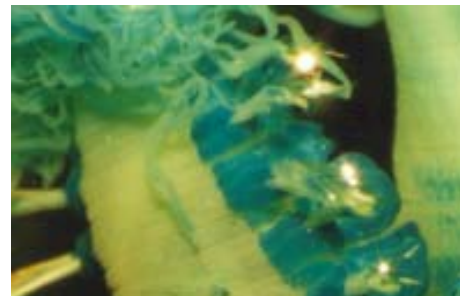
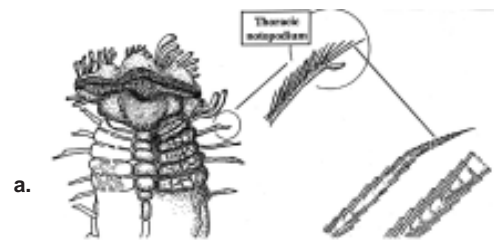
## Voucher Information

SERIAL NUMBER	STATION	SAMPLE DATE	NUMBER OF SPECIMENS	COMMENTS/NOTES
SWOOA153	38	11 Sep 00	1	DJN, Large whole specimen

### Characters:

- Ventral scutes not inflated and widely separated with pads. Scutes appear wrinkled (a).
- Unusually long fan shaped thoracic notopodia with cirriform lobes (a).
- Notosetae appear plumose, however close inspection of broken tips reveal a stacked cone structure (a).
- Methyl green stains dark on the ventral scutes and around parapodia (no stain on central ventral pads). Dorsal staining visible only around parapodia (b) with defined block pattern.

### Illustrations:



a. from Rick Rowe's notes  
 b. dorsal staining pattern

### Additional Information:

Type locality is British Columbia in sandy mud at 38 m.

### Related Species:

Differs from most other common *Polycirrus* in the morphology of the ventral scutes and structure of the notosetae.

### References:

- Banse, Karl. 1980. Terebellidae (Polychaeta) From the Northeast Pacific Ocean. Pp. 20-40 in Canadian Journal of Fisheries and Aquatic Sciences. vol. 37.
- Rowe, Rick. 1998. *Polycirrus* sp. I Banse, 1980 worksheet. City of San Diego Marine Monitoring Lab.