

SCAMIT Code: CMM 12

Date Examined: November 12, 1985
Voucher by: Susan Williams (AHF)

LITERATURE: Hartman, 1969
Hobson & Banse, 1981
Moore, 1909

DIAGNOSTIC CHARACTERISTICS:

1. 17 thoracic setigers.
2. Thoracic uncini with long handles in anterior segments (Fig. 1); posterior uncini with reduced handles (Fig. 2).
3. Branchiae three pairs, diminish in size posteriorly, arborescently branched.
4. Lateral lappets well-developed on segments 1 and 3; segment 2 reduced (Fig. 3).
5. Tube chitinized, with tessellated top resembling a coarse sponge.

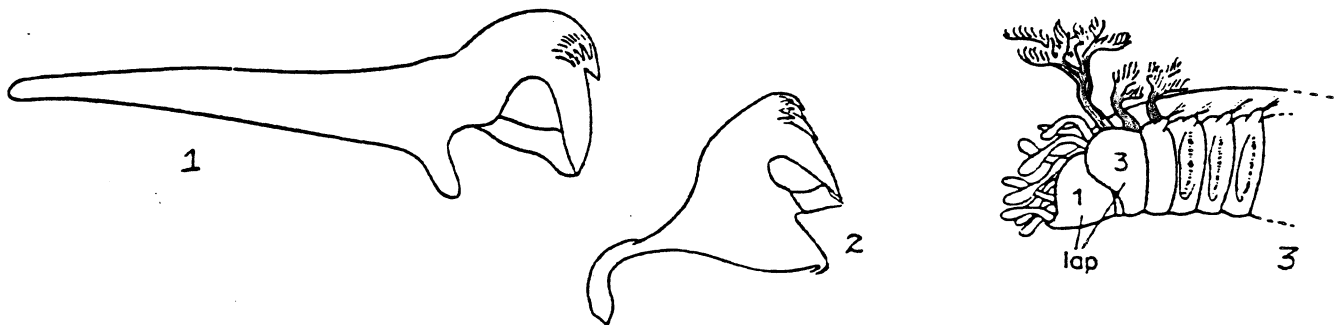
RELATED SPECIES AND DIFFERENCES:

Pista alata, P. disjuncta, P. brevibranchiata: two pairs branchiae.

Pista moorei: branchiae with long stem and rows of branches arranged in a spiral.

Pista pacifica: first thoracic uncini with smooth crown; large lappets on segment 4; posterior thoracic uncini with long handles.

DISTRIBUTION: Southern California to western Canada; littoral, in rocky habitats.



Figs 1,2 from Hartman, 1969
Fig. 3 from Hobson & Banse,
1981