

Pista alata Moore, 1909  
Terebellidae

Vol 4, No. 11

SCAMIT Code: PL 61  
CMM 10

Date Examined: November 12, 1985  
Voucher by: Susan Williams

LITERATURE: Hartman, 1969  
Moore, 1909

DIAGNOSTIC CHARACTERS:

1. Thorax with 17 setigers; uncini from setiger 2, in double rows from setiger 7.
2. Anterior thoracic uncini with long handles (Fig. 4); posterior uncini have only a short remnant, if any.
3. Lateral lappets largest on segments 1 and 3 (Fig. 1).
4. Transverse shelf with a median forward projection across dorsum of setiger 1 (Figs. 1, 2).
5. Branchiae 2 pairs: each with a long trunk which divides 3-5 times and again several times to resemble a plume. NOTE: length of trunk may vary from short to long.
6. Methyl green staining (Figs. 1, 3): note that stain does not completely encompass unical tori and that the dorsum stains only through setigers 2-3.

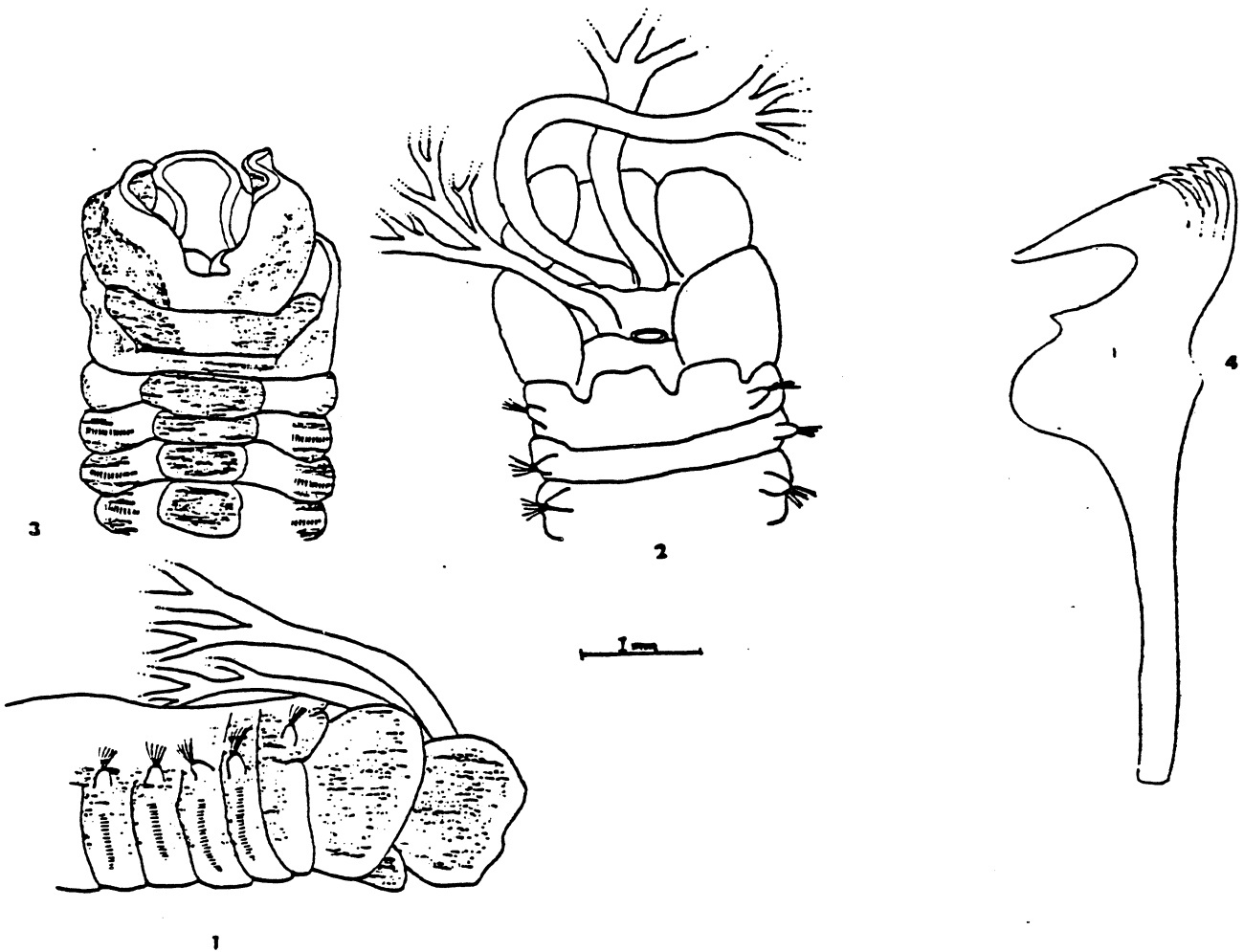
RELATED SPECIES AND DIFFERENCES:

Pista alata may be distinguished from other Pacific species by the characteristic dorsal transverse shelf.

DISTRIBUTION: Central and southern California; intertidal and shelf depths.

Figure 5 - Pista alata





Figures 1, 2, 3 original; shaded areas are methyl green staining pattern

Figure 4 from Hartman, 1969