

Deviations in character states observed on large *Spiophanes berkeleyorum*.

By: Larry Lovell, LACSD, November 8, 2006

A few large (2.8-3.2mm wide at set 10) specimens have recently been observed with deviations in some character states. It is not unusual for extremely large mega-individuals to experience changes in body morphometrics like parapodial lobe development.

In the pictures below, there are three things I want to point out: 1) the double occipital antennae (not that unusual, I admit); 2) the multiple terminal filiform tips of the noto- and neuropodial lobes on some early setigers; and 3) the invaginated nature of the dorsal ciliated organs (nuchal organs).

I don't believe that these changes are anything more than just oddities of extreme size. But I am curious, has anyone else noticed these conditions on mega-individuals from their samples?

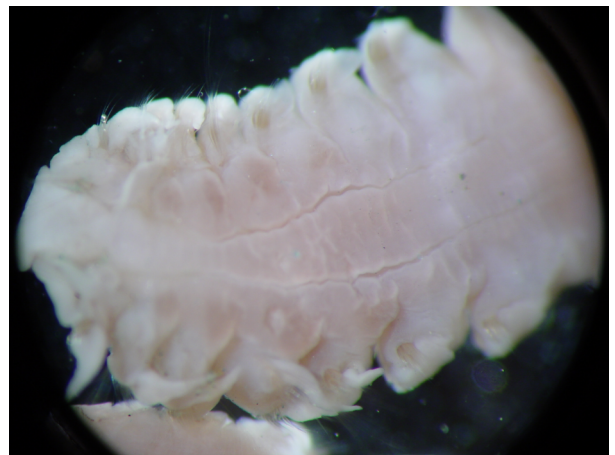


Figure 2. Invaginated dorsal ciliated organs.

Figure 1. Double occipital antennae and multiple filiform tips on parapodial lobes.

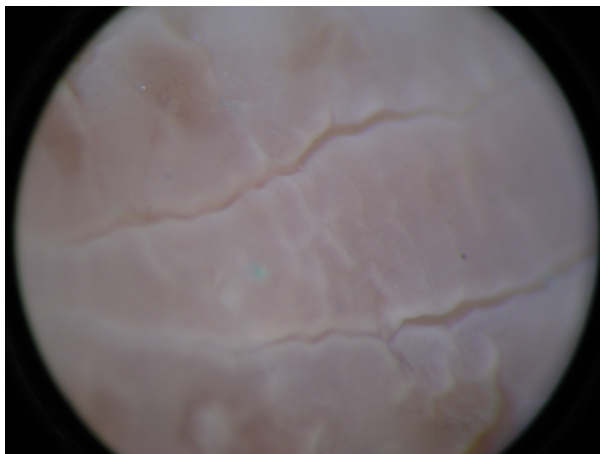


Figure 3. Close-up of invaginated ciliated organs.



Figure 4. The usual ventral T-m.g. stain for this species.