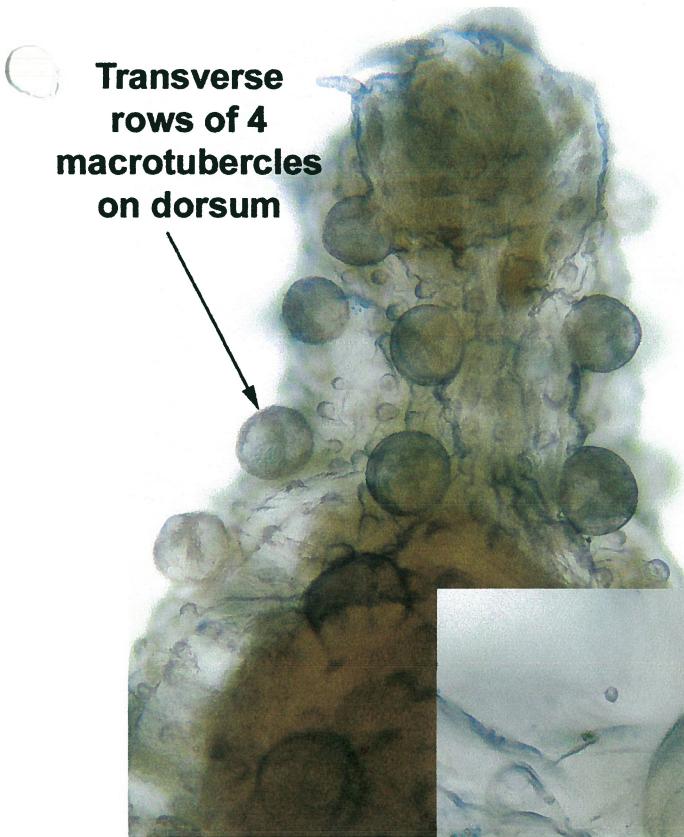
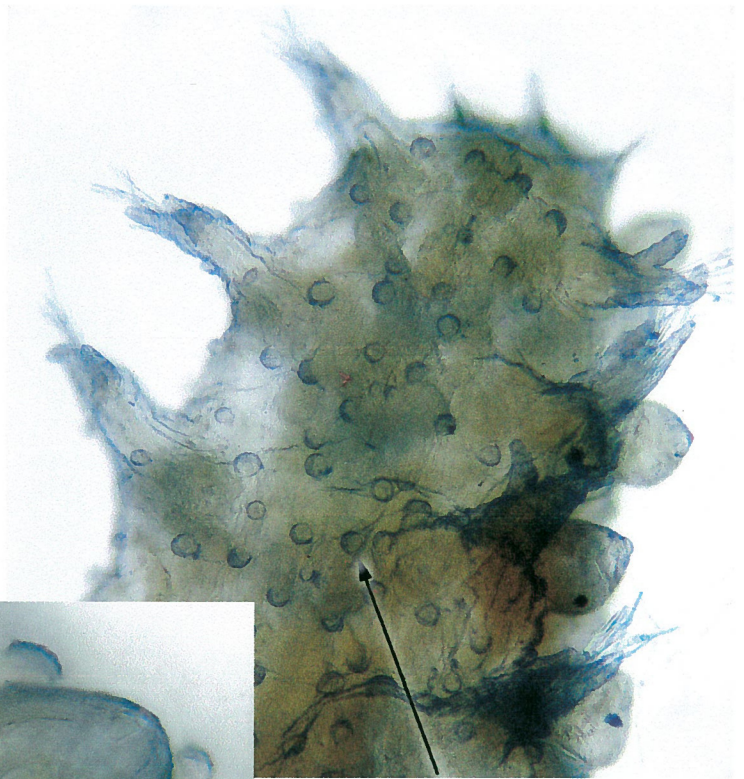


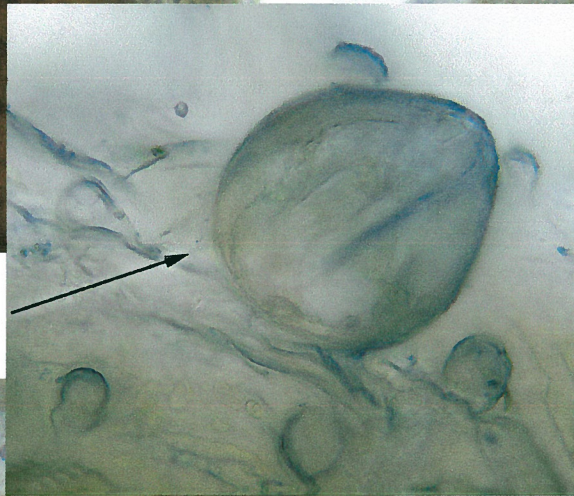
***Sphaerodoropsis biserialis* (Berkeley & Berkeley 1944)**



Transverse rows of 4 macrotubercles on dorsum

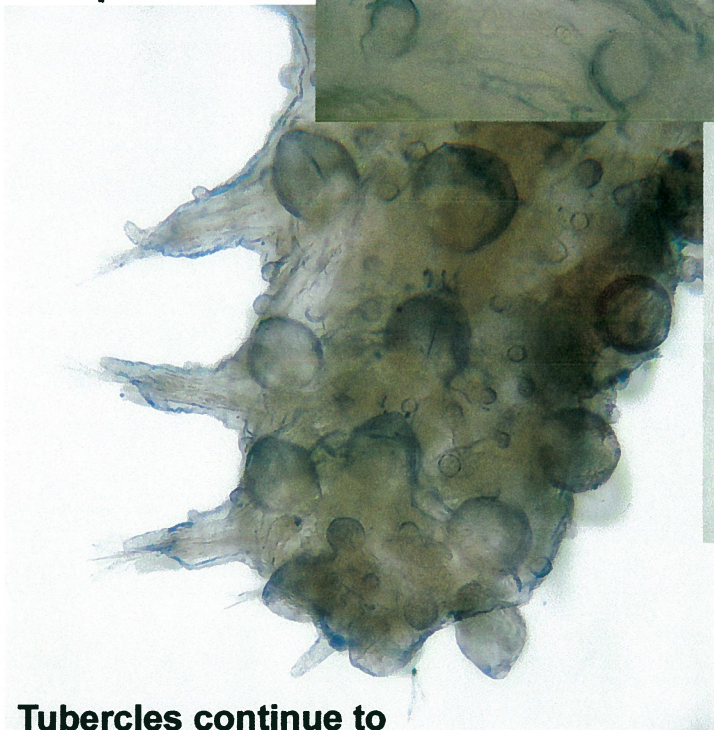
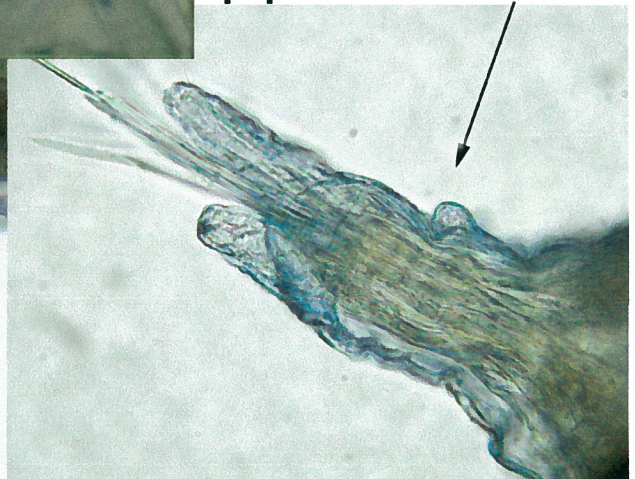


Ventrum with with microtubercles (papillae) only



Macrotubercles without terminal process

Parapodia with single papilla on anterior face



Tubercles continue to posterior end

**City of San Diego
SBOO I28_r2
3Jan06 58m**

R Rowe 060409