

Some

	No. Abdominal Setigers Anterior to Anal Depression	No. Anal Depression Setigers
<i>E. magna</i> (Fauchald, 1972)	32	7
<i>E. velifera</i> Banse, 1972	20-25	7-9
<i>E. heteroseta</i> Hartman, 1978	21	8
<i>E. pallida</i> Ehlers, 1908b	20*	12
<i>E. capensis</i> Day, 1961	18-24	7-8
<i>E. analis</i> (Krøyer, 1856)	16-22	9-12
<i>E. undulocincta</i> Hartmann-Schröder and Rosenfeldt, 1989	16	6
<i>E. papillosa</i> (Sars, 1851)	21	8-10
<i>E. variabilis</i> Hutchings and Murray, 1984	12-17	7-15
<i>E. elegans</i> Verrill, 1873	12-15	8-10
<i>E. rubrocincta</i> (Sars, 1862)	11-15	10-12
<i>E. alicaudata</i> Moore and Busch, 1904	14	8
<i>E. rosea</i> Langerhans, 1884	10-12	5-7
<i>E. bansei</i> Ruff and Brown, 1989	11	6
<i>Euchone</i> sp. 1 BIOSHELF	11	3
<i>E. arenae</i> Hartman, 1966	6-9	6
<i>E. limnicola</i> Reish, 1966	8	10
<i>E. southerni incisa</i> Banse, 1970	8	5
<i>E. southerni</i> Banse, 1970	8	4-5
<i>E. cochranæ</i> , new species	7	8
<i>E. heterochaeta</i> (Rullier, 1972)	6	8
<i>E. incolor</i> Hartman, 1965	6	3
<i>E. hancocki</i> Banse, 1970	5	3
<i>E. scotiarum</i> Hartman, 1978	5	3
<i>Euchone</i> x sensu Cochrane, 2000	5	3
<i>E. quadrisegmenta</i> Zhao et al., 1993	4	3
<i>E. trilobata</i> (Banse, 1957)	2	4
<i>E. longifissurata</i> Uschakov, 1950	?	15

J789 4A

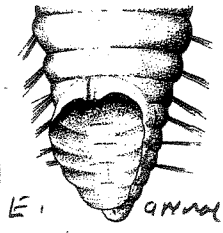
8 in vent
17 per abd.
8 Thru
cells straight oblique
notch lateral

TABULAR KEY TO
SOUTHERN CALIFORNIA EUCHONE SPECIES

by See Banse 1970

Leslie Harris
Marine Biological Consultants
947 Newhall, Costa Mesa, CA 92626

amvao -
6+8 = 14
4362 B.03



Species	1.	2.	3.	4.	5.	6.	7.	8.
<u>arenae</u> Hartman 1966 13-15 abd total	6-9 6-9	6	5-7	-	level, slight midventral notch	long limbate, short limbate, subspatulate	+	Southern California; Gulf of California
<u>hancocki</u> Banse 1970	5	3	4	1st; post- setal	level to slightly oblique, no distinct mid- ventral incision	long limbate, short limbate, short & fine limbate	-	Southern California
<u>incolor</u> Hartman 1965 Hartman 69 Sam 5 11 65 Sam 5-8 Wish of E. & J. Banse 70	6	3	3	3rd; pre- setal	oblique, slightly higher ventrally, slight mid- ventral and lateral notches	long limbate, short limbate, subspatulate	-	New England; Northeast Pacific
<u>limnicola</u> Reish 1960 0192-51 0798-4D	8	10	7	-	oblique, higher ventrally than dorsally, lack- ing notches	long limbate, short limbate, subspatulate	+	Southern California
<u>trilobata</u> (Banse 1954) Banse 1957 p 2	2	4	4	-	level, no notches, brachial basis not concealed	long limbate, short limbate, short & fine limbate	-	Falkland Islands
sp. A	3	3		1st post- setal *	oblique, higher ventrally than dorsally, no notches, con- ceals branchial basis	long limbate, short limbate, short & fine limbate	-	Southern California

Euchone rosea (10-12) (6-7) tabd abd set A 18 high collar, 1 small notch ventral & dorsal incision. ventral shield obvious
+ type material lost * very inconspicuous
Ivory coast, Madagascar

Table Key:
1. # anterior abdominal setigers
2. # anal depression setigers
3. # radioles ^{1 pair}
4. abdominal setiger with glandular girdle; position
5. collar
6. thoracic notosetae
7. ventral shields
8. occurrence

E. southerni
(Banse 1970)
also subspecies incise

(Euchone velifera)
7 anal
27-32 abd setigers
see above
Kollan notched

0714
0716
0720

10

10

10

1. 10 to 12 anterior abdominal setigers; 6 to 7 in the depression.
Up to 8 pairs of radioles with pinnules *E. rosea*
- Fewer than 10 anterior abdominal setigers 2
2. 2 anterior abdominal setigers *E. trilobata*
- More than 2 anterior abdominal setigers 3
3. 5 or 6 anterior abdominal setigers; 3 setigers in the depression 4
- 6 to 9 anterior abdominal setigers; 4 or more setigers in the depression 5
4. A postsetal girdle of glands on the 1st abdominal setigers
..... *E. hancocki*
- A presetal girdle of glands on the 3rd abdominal setiger *E. incolor*
5. 10 setigers in the depression, 8 anterior abdominal setigers
..... *E. limynicola*
- 7 or fewer setigers in the depression; 6 to 9 anterior abdominal setigers 8
6. Two types of uncini within tori of anterior abdominal setigers
(Fig. 3d, e) *E. arenae*
- One type of uncinus in anterior abdominal setigers; 8 anterior abdominal setigers 7
7. Ventral notch in collar (as in Fig. 3c). 4 setigers in the depression. Abdominal uncini without posterior elongation (as in Fig. 3d) *E. southerni southerni*
- Ventral incision in collar (Fig. 5b). 5 setigers in the depression. Abdominal uncini with posterior elongation (as in Fig. 1d)
..... *E. southerni incisa*