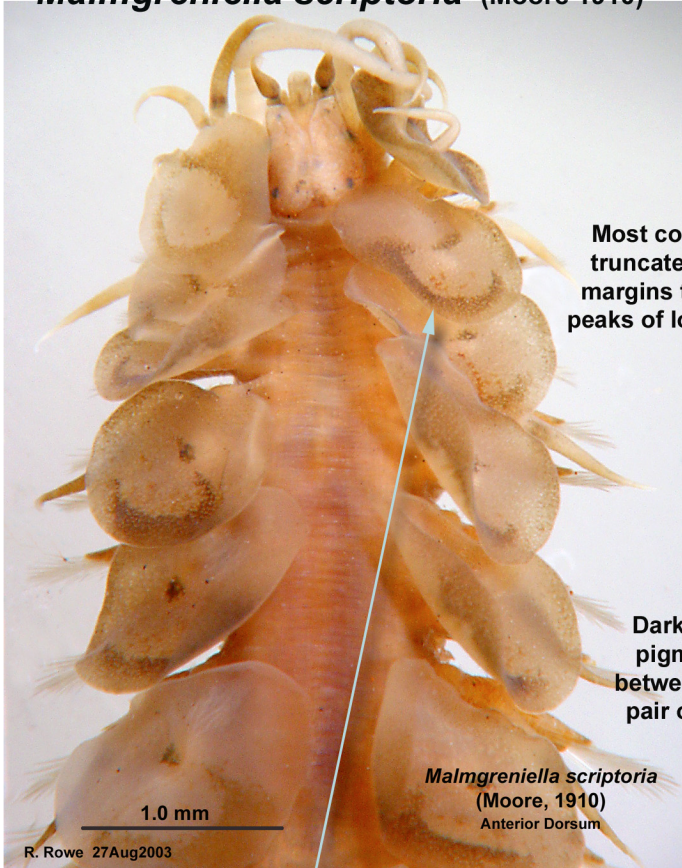
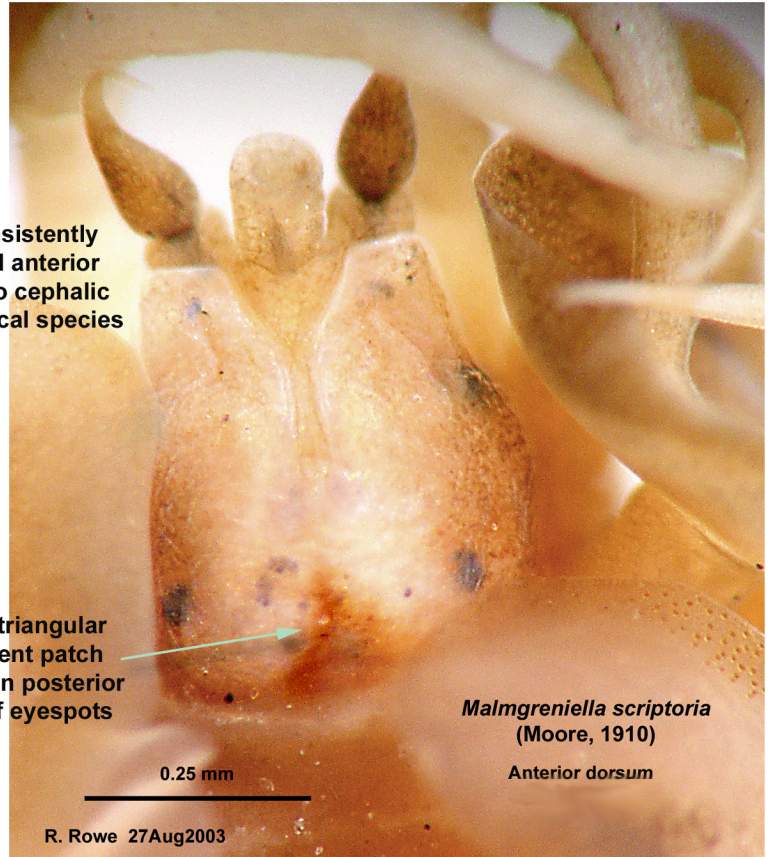


***Malmgreniella scriptoria* (Moore 1910)**

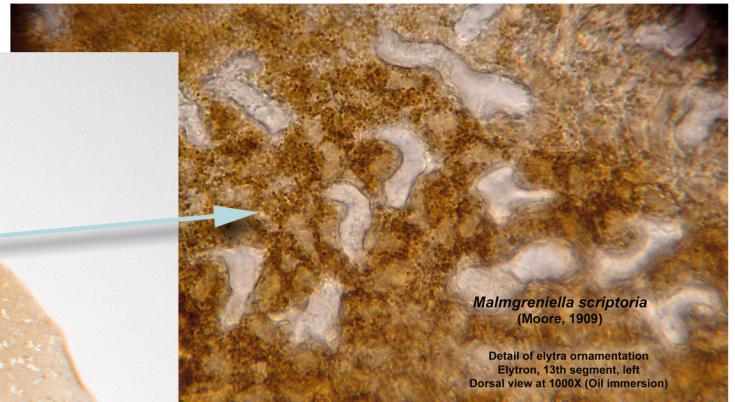
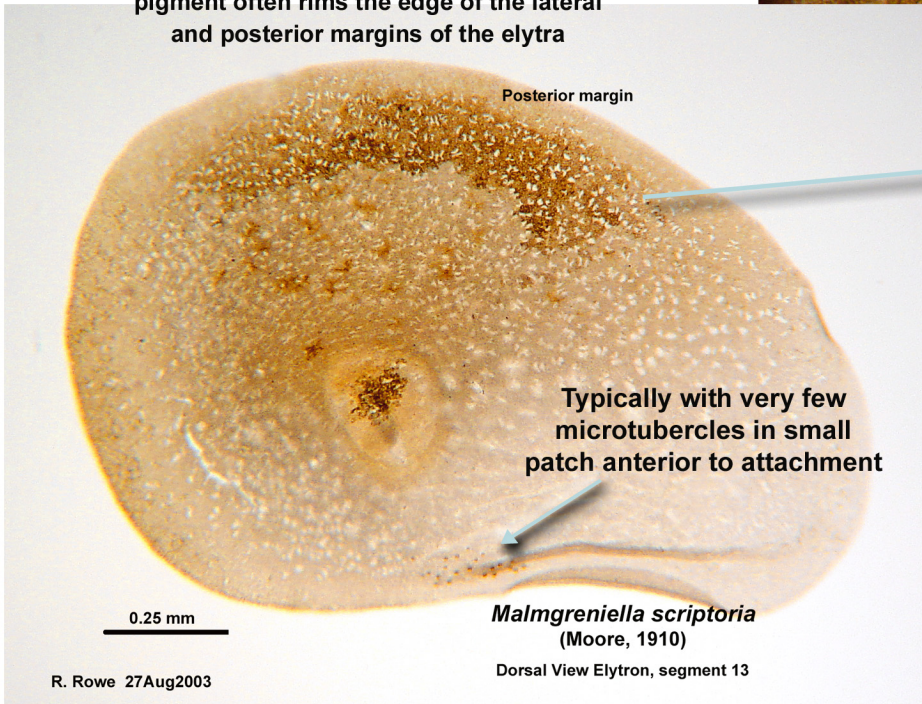


Most consistently truncated anterior margins to cephalic peaks of local species

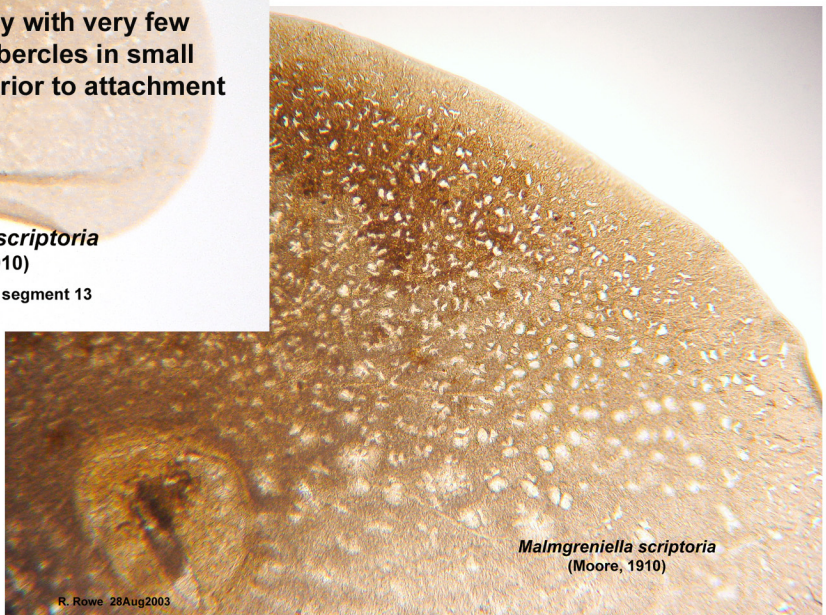
Dark triangular pigment patch between posterior pair of eyespots



In small specimens a narrow band of darker pigment often rims the edge of the lateral and posterior margins of the elytra



Specimen loaned by Larry Lovell from Orange County Sanitation District voucher collection Vial 0006193 Orig. ID by Lovell 4/2000 Survey 99160 Station 39 rep 1 (no depth data provided).

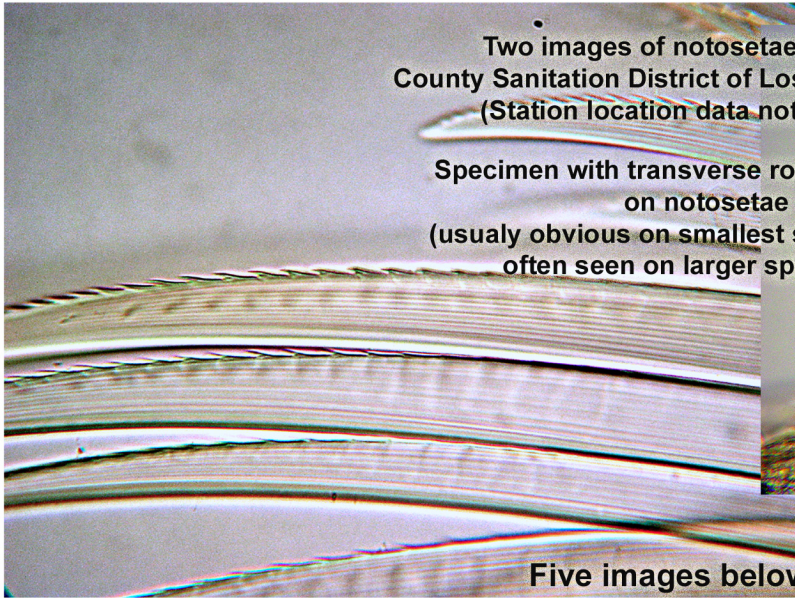


Images: RRowe (page assembled 4May06)

**Malmgreniella scriptoria (cont.)**

Two images of notosetae only from County Sanitation District of Los Angeles County (Station location data not recorded)

Specimen with transverse rows of spinules on notosetae (usually obvious on smallest specimens and often seen on larger specimens)



Five images below from specimen imaged on page 1

Posterior dorsal cirrophores usually without pigment



*Malmgreniella scriptoria* (Moore, 1910)  
Notopodium Anterior View (Segment 10, left)



*Malmgreniella scriptoria* (Moore, 1910)  
Parapodium Anterior View (Segment 10, left)

0.25 mm

R. Rowe 27Aug2003

Primary tooth strongly curved & typically shorter than setal width at base of secondary tooth

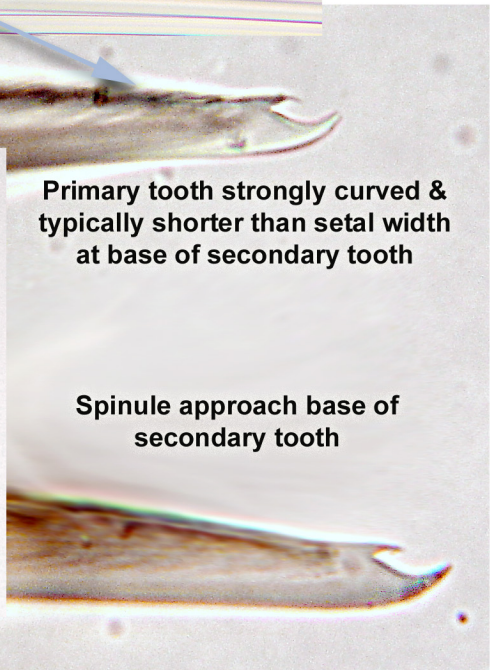
Spinule approach base of secondary tooth



*Malmgreniella scriptoria* (Moore, 1910)

Mid-fascicle Neurosetae (Segment 10, left)

R. Rowe 28Aug2003



R. Rowe 28Aug2003