



City and County of San Francisco Voucher Sheet

Species: *Malmgreniella liei*
 Authority: Pettibone, 1993
 Common Synonyms:

Voucher #: P37
 Taxa: Polychaeta: Polynoidae
 Original Prep.Date: 27 Jul 04
 Prepared By: D. Norris
 Species Code: MAL_LIEI

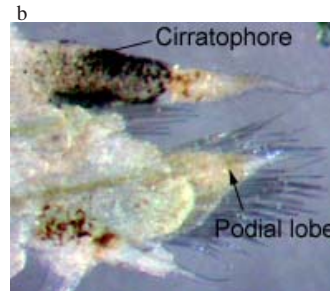
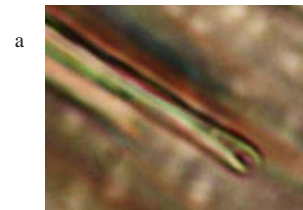
Voucher Information

SAMPLE NUMBER	STATION	SAMPLE DATE	NUMBER OF SPECIMENS	COMMENTS/NOTES
0309112576	SWOO 32	12 Sep 2004	1	Whole specimen, ovigerous female, collected at 25 m. DJN

Characters:

- Neurosetae with secondary tooth nearly reaching primary tooth and with a wide space between the teeth; the tips appear wrench-like (a)
- Parapodia with long gradually tapering anterior podial lobe (b, posterior view)
- Dorsal cirri with thick cirratophores (b)
- Bi-lobed prostomium with well defined anterior peaks (c)

Illustrations:



- a. Neuroseta tip (DJN)
 b. Parapodium, posterior view, (DJN)
 c. Prostomium adapted from Pettibone 1993

Additional Information:

Holotype was collected in fine sand mixed with silt in the Puget Sound.

Similar Species:

Other *Malmgreniella* species appear very similar. Differentiate from other *Malmgreniella* by the peaked prostomal lobes, thick cirratophores, and triangular podial lobe; confirm identification with a close examination of the neurosetae.

Comments:

Pettibone originally described this species without eyes or pigmentation, while our specimen has distinct color and normal eyes. Specimens with eyes and pigmentation are commonly found in the Puget Sound and Pettibone's specimens are probably bleached out (Ruff, pers. comm.).

Malmgreniella liei (continued)

References:

Pettibone, M. H. 1993. Scaled polychaetes (Polynoidae) associated with ophiuroids and other invertebrates and review of species referred to *Malmrenia* McIntosh and replaced with *Malmgreniella* Hartman, with descriptions of new taxa. *Smithsonian Contributions to Zoology* no.538:92.

Ruff, Eugene. 2004. E-mail correspondence.

Revision History: