

**Literature:** Blake, J. A. 1996. Taxonomic Atlas of the Benthic Fauna of the Santa Maria Basin and Western Santa Barbara Channel. Volume 6, The Annelida part 3: pp 225-232.

Imajima, M. 1989. Poecilochaetidae (Annelida, Polychaeta) from Japan. Bull. Nat. Sci. Mus. Series A (Zoology) 15: 61-103.

Martin, M. 1977. Proc. SCCWRP Taxonomic Standardization Prog. Vol. 5 No 3. May 1977.

Leon-Gonzalez, J. A. 1992. Soft bottom polychaetes from the western coast of Baja California Sur, Mexico. II. Poecilochaetidae. Cah. Biol. Mar. (33) 109-114.

Miura, T. 1989. Two new species of the genus *Poecilochaetus* (Polychaeta, Poecilochaetidae) from Japan. Proceedings of the Japanese Society of Systematic Zoology No. 39: 8-19.

**Synonymy:** *Poecilochaetus* sp A Martin 1977.

**Diagnostic Characters:**

1. Ampullaceous or “bottle shaped” post setal lobes begin on setigers 7-13.
2. Branched branchia on posterior face of parapodium begin at setiger 14. L. A. harbor specimens may begin at 12. Branchial filaments partially retractable, increasing in number in more posterior segments. (Figure 1)
3. Without blunt spines in setigers 22-46. Spinose setae and plumose setae both present. (Figure 2).
4. Lacks chitinous brown triangular tooth on dorsum of setiger 9 found on *P. johnsoni*.

**Related Species and Differences:**

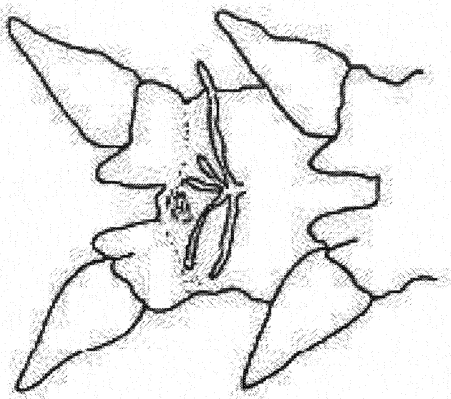
*Poecilochaetus johnsoni*: Lacks parapodial branchia. Blunt spines with hirsute tips. Segment 9 with mid-dorsal chitinous tooth.

*Poecilochaetus multibranchiatus*: Branchial filaments begin setiger 12 with both dorsal and ventrally placed groups. Initially each group with 2-4 filaments increasing posteriorly to maximally 11 filaments.

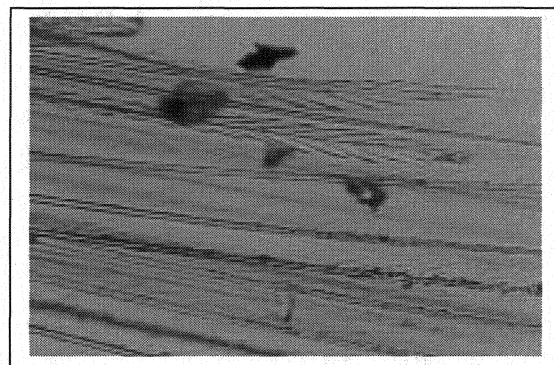
*Poecilochaetus* sp A Blake 1996: Lacks branchia. Probably juvenile *P. johnsoni*.

**Distribution:** Southern California coastal bottoms in depths of 30-60 meter (10 M L.A. harbor).  
*Poecilochaetus* sp A SCAMIT 2003

SCAMIT Vol. 22 No. 1



Parapodia 25 posterior view  
w/branchia. From Martin 1977  
Figure 1.



Plumose and spinose  
setae  
Figure 2

Table 1. Setiger number with feature. (after de Leon-Gonzalez)

	<u>ampullaceous</u> <u>lobes</u>	<u>first setiger w/</u> <u>branchial</u>	<u>max #</u> <u>branchial</u> <u>filaments</u>	<u>nuchal organs</u> <u>to setiger #</u>
<i>P. serpens</i>	7-13	21	2	3
<i>P. tropicus</i>	7-13	19	2	9
<i>P. modestus</i>	7-11	18	2	3
<i>P. exmouthensis</i>	7-13	19	2	5
<i>P. branchiatus</i>	7-10	20	4	1
<i>P. trilobatus</i>	7-13	18	2	8
<i>P. clavatus</i>	7-10	20	2	3
<i>P. spinulosus</i>	7-13	17	4	3
<i>P. tricirratus</i>	7-11	13-17	3	3
<i>P. multibranchiatus</i>	7-11	12	11	3
<i>P. sp A of SCAMIT</i>	7-13	14	5-6	4-5
<i>P. sp A of Blake</i>	7-11	none	---	<4
<i>P. johnsoni</i>	7-13	none	---	4-5