

# The Species of *Phyllodoce* of Pt. Loma

**Diagnosis:** Genus *Phyllodoce* Lamarck, 1818

Prostomium with 4 anteriorly placed antennae, nuchal papillae usually present, distal portion of proboscis with or without papillae, proximal portion of proboscis with papillae in discrete rows or diffuse pattern, teeth (cusps) may be present, segments 1 and 2 fused, segment 1 dorsally reduced.

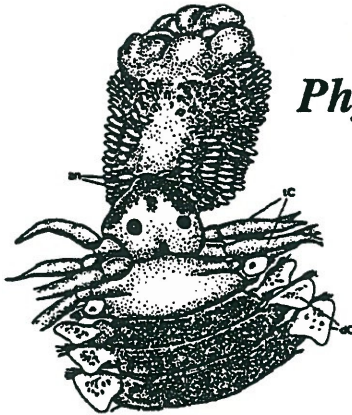
**Tentacular cirri:** 1 pair on segment 1, 2 pair on segment 2, 1 pair on segment 3 with normal ventral cirri.

**SPECIES WITH SETAE ON THE 3rd (=LAST) TENTACULAR SEGMENT**

THIS PAGE

**SPECIES WITHOUT SETAE ON THE 3rd (=LAST) TENTACULAR SEGMENT**

GO TO PAGE 2

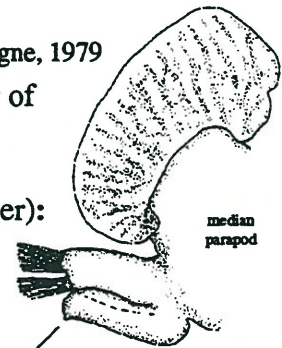


## *Phyllodoce cuspidata* McCammon & Montagne, 1979

**DORSAL PIGMENT:** Darkest on the anterior of prostomium and after the first segment (tentacular segments are unpigmented)

**\*\*\*VENTRAL CIRRI (Look at a median setiger):** Subequal in length to setal lobe with a ventrally pointed "tip"\*\*\*

**SIZE:** Large



\*\*\*

→ see multipalpatar

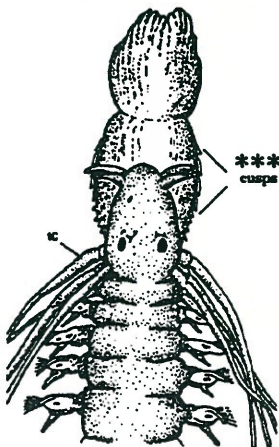
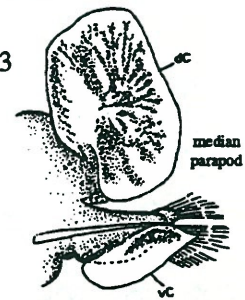


## *Phyllodoce groenlandica* Oersted, 1843

**DORSAL PIGMENT:** Darkest on the anterior of prostomium, segments are uniformly light (usually) or dark, some with dark intersegmental transverse bands

**VENTRAL CIRRI:** Pointed, longer than setal lobe

**SIZE:** Large



## *Phyllodoce pettibonae* Blake, 1988

**DORSAL PIGMENT:** Uniformly light over entire body, some worms light green laterally

**VENTRAL CIRRI:** Pointed, longer than setal lobe

**FRONTAL ANTENNAE:** inserted subterminally

**\*\*\*PROBOSCIS:** With chitinized cusps\*\*\*

**\*\*\*NUCHAL PAPILLA:** Absent\*\*\*

**SIZE:** Small

