

Phyllodocidae (Annelida: Polychaeta) from the City of San Diego's Ocean Monitoring Program

Family Phyllodocidae

Eteone sp

Eulalia californiensis (Hartman 1936)

Eulalia levicornuta Moore 1909

Eulalia quadrioculata Moore 1906

Eumida longicornuta Moore 1906

Mystides sp

Nereiphylla castanea (Marenzeller 1879)

Paranaitis polynoides (Moore 1909)

Phyllodoce cuspidata McCammon & Montagne 1979

Phyllodoce groenlandica Ørsted 1843

Phyllodoce hartmanae Blake & Walton 1977

Phyllodoce longipes Kinberg 1866

Phyllodoce medipapillata Moore 1909

Phyllodoce pettiboneae Blake 1988

Sige sp A SCAMIT 1995

Selected Illustrations of Some Common Phyllodocidae (excluding *Phyllodoce* spp)

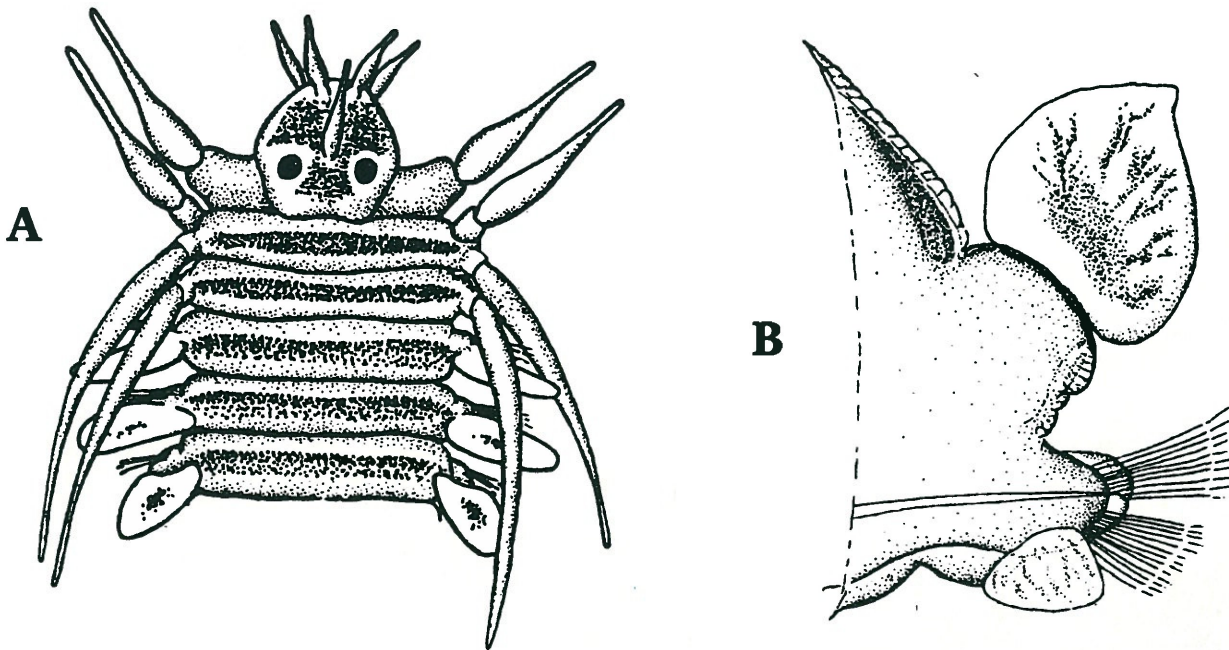


Fig. 1 — *Eumida longicornuta*: A. anterior-dorsal view, B. middle parapodium, anterior view.