

Opheliidae Malmgren, 1867

KEY TO GENERA (adapted from Hartman, 1969)

- 1. Midventral groove extends along all or part of body.....2
 Midventral groove absent.....*Travisia*
- 2. Ventral groove extends throughout length of body (fig. 1).....3
 Ventral groove limited to posterior region (fig. 2).....5
- 3. Branchiae present on some parapodia (fig. 1).....4
 Branchiae absent.....*Polyophthalmus*
- 4. Lateral eyespots located between some successive parapodia.....*Armandia*
 Lateral eyespots lacking.....*Ophelina* (SEE BELOW)
- 5. Anterior region, including the first 2 setigers, set off from thorax by a constricted ring...
*Euzonus* s. lat.....6
 Anterior region not set off from posterior region by a constricted ring (fig. 2).....*Ophelia* (SEE BELOW) *assimilis w/o eyespot*
- 6. Branchiae pectinately branched.....*E. (Euzonus)*
 Branchiae palmately or irregularly branched.....*E. (Thoracophelia)*

Ophelina Oersted, 1843

KEY TO SPECIES (adapted from Hartman, 1969)

- 1. Everted proboscis pouchlike; body opalescent greenish gray.....*O. acuminata*
 Everted proboscis distally fringed (fig. 1); body lacks color.....*O. pallida* or *O. sp SD 1*
 (see *O. sp SD 1* voucher sheet)

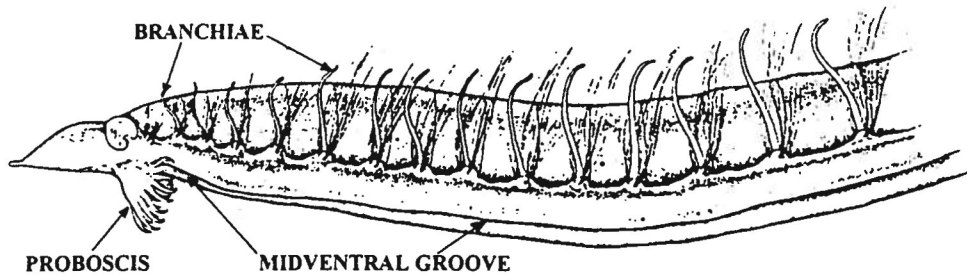


Fig. 1 *Ophelina pallida* (fig. Hartman, 1960)

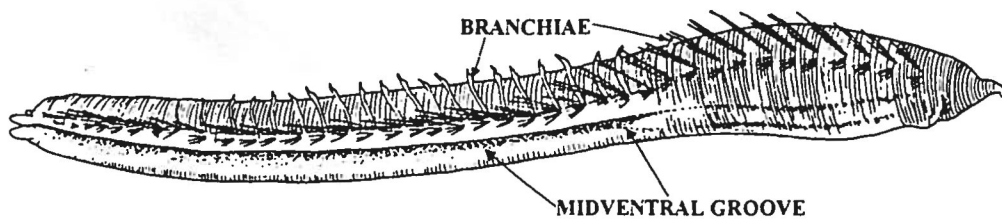


Fig. 2 *Ophelia limacina* (fig. Hartman, 1969 from Stop-Bowitz, 1945)
 (*Ophelia pulchella* Tebble, 1953 reported from Pt. Loma)