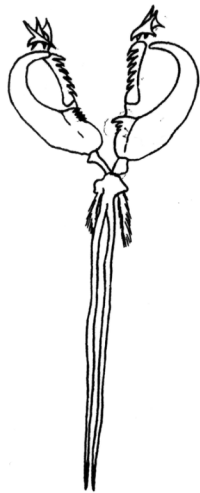


Pictorial Key to the *Drilonereis* species of California  
By  
Lawrence L. Lovell, LACSD

1a. Maxillae I with dentate base



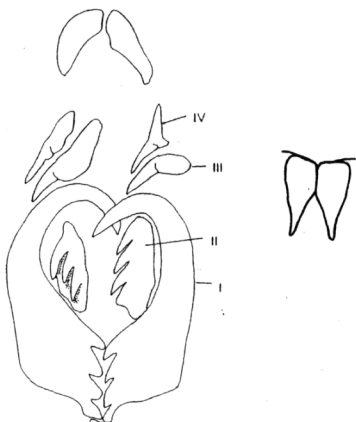
Go to 2

1b. Maxillae I with smooth base

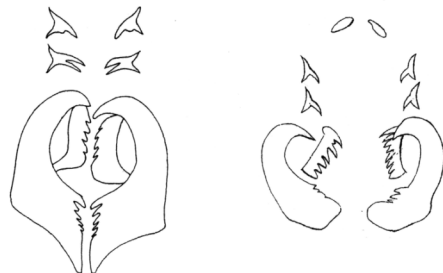


Go to 7

2a. Mandibles present, well developed



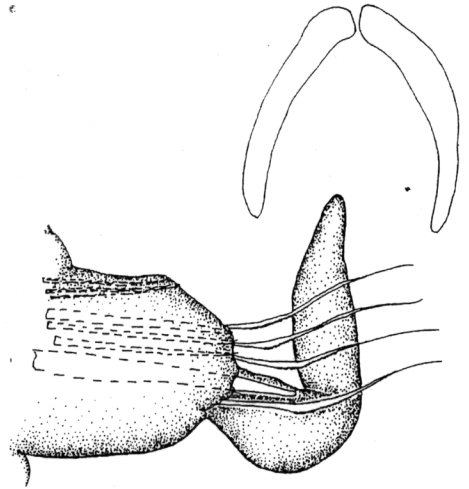
2b. Mandibles absent or reduced



3a. Mandibles triangular fused at base



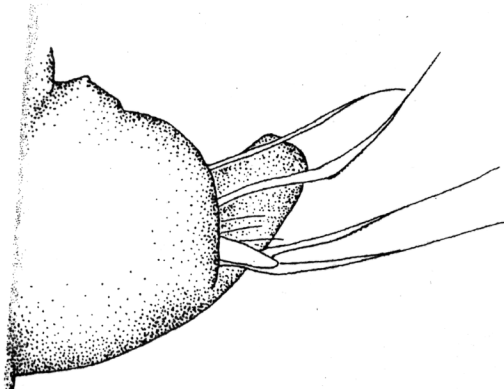
3b. Mandibles rod-like, not fused



Go to 4

*Drilonereis spectabilis*  
Hilbig, 1995

4a. Posterior body with short post-setal lobes.



4b. Posterior body with long pre- and post-setal lobes, pre-setal longest.

