
CSDLAC specimens 0702-8C4

April 2003

Examined by T. Parker

Literature: Emerson, R. R. 1974. A new species of polychaetous annelid (Arabellidae) parasitic in *Diopatra ornata* (Onuphidae) from Southern California. Bull. So. Cal. Acad. Sci. (73) 1-5.

Hilbig, B. 1995. Chapter 12: Family Oeonidae Kinberg 1865. Emended Orensanz 1990. Taxonomic Atlas of the benthic fauna of the Santa Maria basin and western Santa Barbara channel. Vol. 5: pp. 315-327.

Synonymy: in part *Arabella* sp within Southern California Bight.
in part *Arabella iricolor* within Southern California Bight.

Diagnostic Characters:

1. Four small embedded "eye spots" at base of prostomium.
2. Maxillae 1 has evenly spaced dentate plate opposite a plate with wide gap between two largest teeth (Figure 1).
3. Two acicula per parapodium.

Related Species and Differences:

Arabella iricolor maxilla 1 with simple falcate tips on both sides, each strongly curved inward. Dentition larger sized on one side (Fig. 4). 2-4 acicula.

Arabella semimaculata maxilla 1 with simple falcate tips wider and less pointed. Dentition smaller and more evenly sized (Fig. 2). 4-6 acicula.

Arabella protomutans maxilla 1 with falcate tips asymmetrical with accessory secondary tooth (Fig. 5). Acicula number unknown.

Arabella pectinata maxilla 1 with falcate tips asymmetrical, with one split into bifid structure. Bifid tip maxilla with larger and longer series of denticles (Fig. 3). Acicula number unknown.

It was never a dog & I have a coat - and we used description for both labelled "dog" others should be listed into series "There is 50 more variety in dogs That we can't list them apart".

"first & second maxillae are reported to be asymmetrical by most authors, although there appears to be some variability in this character; for example, McIntosh (1910) described the maxillae as being symmetrical."

copied from Orensanz 1974

Unknown if maxilla dentition counts represent a taxonomic (species) difference or just growth/condition

(Unsure) - taxa difference has been assigned to maxilla 1 tip below: slightly bluish, subventral tip, uneven dentition large dentition

maxillary formula of type; left MI falcate, tip of right MI not very pronounced

Being large F prefer to visit easily without ambivalent about that clearly is different in size, shape, etc, color from other specimens - 50 another for count maxilla dentition - and list them major before to get

is not a variation in specimens of Arabella under this is variation in the description listed as 'A' under 'The specimen complete another form.

DENTITION IN ARABELLA IRICOLOR L. Harris, 5 Mar 2003

source of information	MI Left & Right Maxilla 10 to 5 (upper side)	MII Left & Right (6-16) used side	MIII Left & Right Upper side	MIV Left & Right Upper side	MV Left & Right
Hilbig 1995 (MMS) text	falcate 10 + 5	6-9 + 10-16	4-8 4-7 + 4-7, small & large teeth alternating	2-7 4-7 + 4-7, small & large teeth alternating	1 + 1
Hilbig 1995 (MMS) figure 12.1	falcate 7(large) + 6 (5 small, 1 large)	obscured	5 + 5, some alternation	4 + 6, some alternation	1 + 1
Orensanz 1974	falcate, 5-10 (left larger than right)	6-9 + 12-16	4-5 + 4-5	2-5 + 2-5	1 + 1
McIntosh 1910	falcate 8 + 9	8(10) + 8(10)	4(5) + 4(5)	4(5) + 4(5)	1 + 1
Fauvel 1923	falcate	6(7) + 12(14)	6 + 4(6)	5(6) + 6	1 + 1
Fauvel 1923 figure	falcate 6 (2 large, 3 small, 1 large) + 4 (large)	obscured + 5 large & several small	6 + 4, some alternation	6 + 4, no alternation	1 + 1
Fauchald 1970	falcate 7(9) + 7(10)	6(9) + 12(16)	4(5) + 4(5), alternation	2(5) + 2(5), alternation	1 + 1
Fauchald 1970	falcate 8 + 9	8 + 14	5 + 5	4 + 4	1 + 1
Pettibone 1963	falcate 8-11, slightly asymmetrical	6-8 + 12-14	4-7 + 4-7, no alternation	4-7 + 4-7, no alternation	1 + 1
Uebelacker 1984	falcate, 7-8 + 6-7	10-13 + 10-13, asymmetrical	7-8 + 7-8, some alternation	4-5 + 4-5, some alternation	1 + 1
DENTITION IN ARABELLA ENDONATA Emerson 1974	falcate 10 + 10	not given	6 + 5	4 + 4	1 + 1
Harris, pers. notes	10 + 10	approx. 12 + 11	6 + 5	4 + 4	1 + 1

Why under a expert checklist for specimen 4 was even

I am trying to get on possible + 1 etc. from simple

Distribution: Southern California coastal bottoms from intertidal to 137 meters.

Arabella endonata Emerson 1974

SCAMIT Vol. 22 No. 2

Illustrations after Emerson 1974 & Hilbig 1995

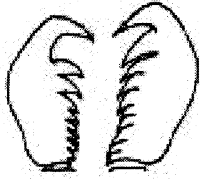


Figure 1. maxilla 1. *A. endonata*



Figure 2. maxilla 1: *A. semimaculata*

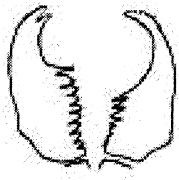


Figure 3. maxilla 1: *A. pectinata*

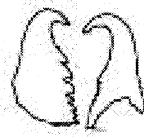


Figure 4. maxilla 1: *A. iricolor*



Figure 5. maxilla 1: *A. protomutans*