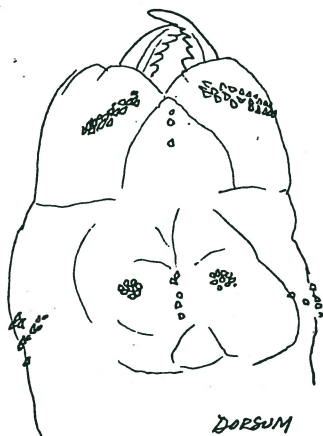
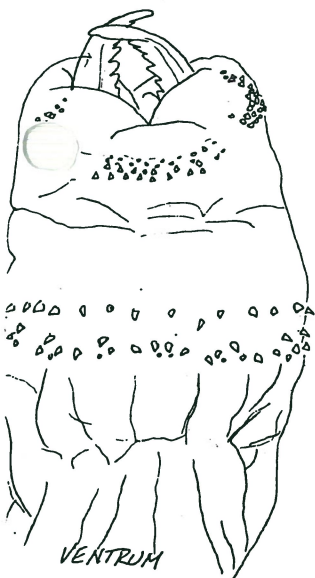


NEREIDIES (VEREIS) SUCCEINA

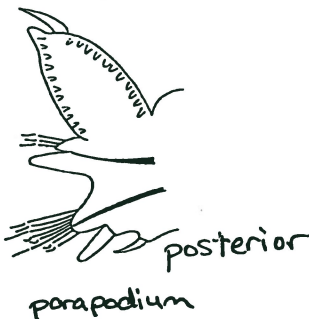
Common to
S.F. Bay



Nereis succinea
proboscis



anterior



posterior
parapodium



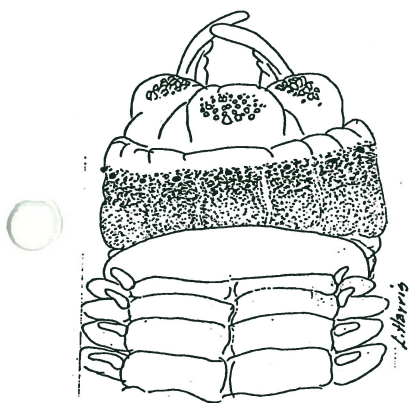
neuropodial
falciger



spiniger

setae

Nereis eakini



proboscis
*note paragnaths
on oral ring



anterior



posterior
parapodium



notopodial
falciger



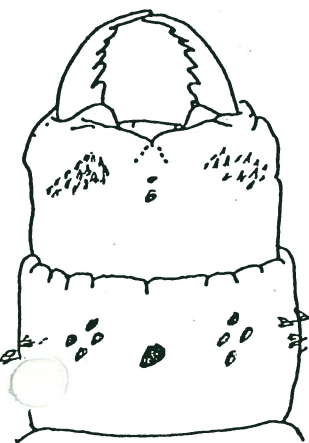
neuropodial
falciger



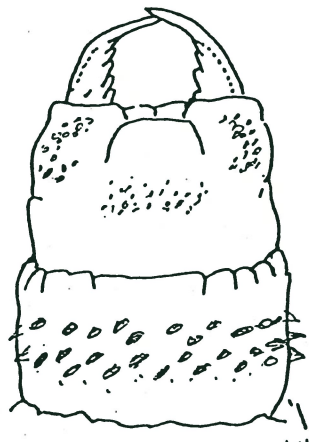
spiniger

setae

Nereis latescens

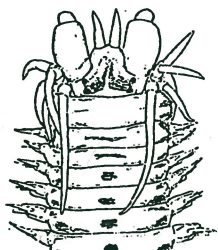


dorsal



ventral

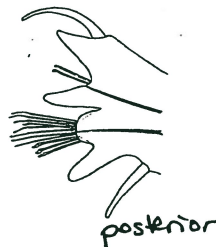
proboscis



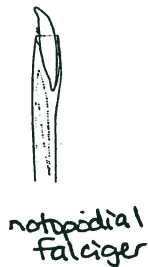
dorsum
*note
pigmentation
pattern



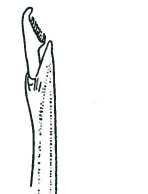
anterior



posterior
parapodium



notopodial
falciger



neuropodial
falciger



spiniger