

VOUCHER SHEET

*See [unclear]*

Nephtys caecoides (Hartman, 1938)

Nephtyidae

Date Examined and Code: November 8, 1982; HYP 15

Keys Used: Hartman, O. 1968 (Atlas) p. 577

Other Literature: Banse, K. and K.D. Hobson. 1974 p. 75

Important Characters: Interramal cirri, present from setiger 4, continued back to near posterior end, are strongly recurved and larger than dorsal cirri; proboscis with 22 rows of distal papilla and 22 rows of subterminal papilla; the largest distalmost; large mid-dorsal papilla; prostomium with characteristic pigment pattern (Fig. 1); median segments with incised acicular lobes.

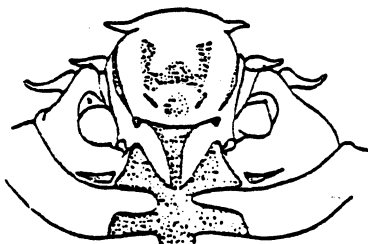


Fig. 1 (from Hartman 1968 p. 577)



Fig. 2 a (Hartman 1968 p. 577)



Fig. 2b (Hartman 1968 p. 589)

*Nephtys [unclear]*



Fig 3. (Hartman 1968 p. 579)

*? Call [unclear]*

---

---

Nephtys caecoides (Hartman, 1938)

Nephtyidae

---

---

Related Species and Character Differences: Nephtys parva - pigment pattern absent from prostomium; interramal cirri shorter and thicker (Fig. 2); lacks mid-dorsal proboscideal papilla; acicular lobes rounded (not incised); tends to be smaller. Nephtys californiensis - pigment pattern reduced on prostomium (Fig. 3); interramal cirri begin on setiger 3.

Variability: Juveniles may lack pigment pattern.