

VOUCHER SHEET

Aglaophamus diccirris (Hartman, 1950)

Nephtyidae

Date Examined and Code: AHF 9

Keys Used: Hartman, O. 1968 (Atlas) p. 567

Other Literature: Hartman, O. 1950. p. 122

Important Characters: Interramal cirri are involute, not recurved (Fig. 1), begin on setiger 5-6; pigmentation absent except for pair of eyes at posterior margin of prostomium.

Related Species and Character Differences: Aglaophamus erectens - interramal cirri begin on setiger 9-11.

Aids to Identification: interramal cirri are involute, not recurved.

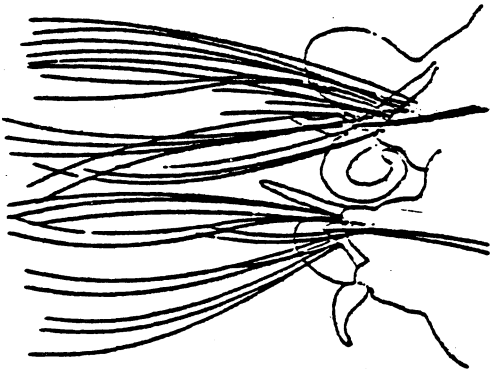


Fig. 1 a. involute
(Hartman, O. 1968.
p. 567)



Fig. 1 b. recurved
(Hartman, O. 1968
p. 579)