



City and County of San Francisco Voucher Sheet

Voucher #: P715

Taxa: Polychaeta: Magelonidae

Original Prep.Date: 17 Aug 2004

Prepared By: S. McCormick and D. Norris

Species Code: MAG_BERKELEYI

Species: *Magelona berkeleyi*

Authority: Jones, 1971

Common Synonyms:

Voucher Information

SAMPLE NUMBER	STATION	SAMPLE DATE	NUMBER OF SPECIMENS	COMMENTS/NOTES
SWOOA105	34	20 SEP 1999	5	head fragments otherwise good condition
RMPA077	BC21	09 FEB 1998	1	SF, head fragment, Rose Bengal stain
BSSWD001	03	26 OCT 1984	1	specimen with elongated head
BSSWD188	25	16 OCT 1992	1	head fragment, dyed blue

Characters:

- Prostomium expanded medially about as wide as long, with prostomial horns and sloping anterior lateral corners (a)
- Setae of parapodium 9 the same as 1 - 8, bilimbate (b)
- Notopodium 9 with ventral neuropodial lobe and dorsal lateral lamella (c)
- Noto- and neuropodial tridentate hooded hooks in two series facing each other, shortest in most lateral position, transition from long to short gradual (d).
- Dorsal thoracic cirri thick
- Methyl green staining pattern: stains around mouth, fades in larger specimens, but consistently stains inside mouth; setigers 4-8 of ventrum with a crescent-shaped pattern (e) (see comments)

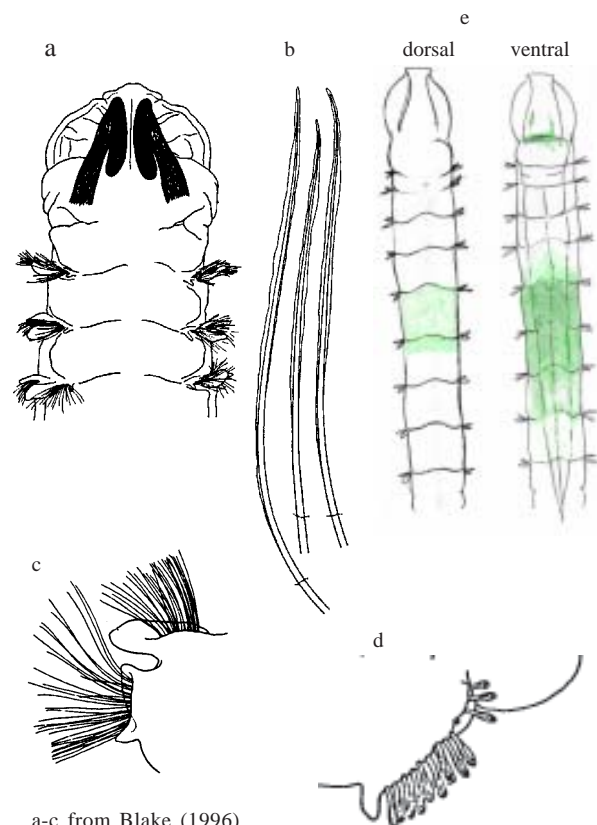
Additional Information:

SIZE: 20 mm long; 0.8 mm wide (Blake 1996)

DISTRIBUTION: Washington to Central California (Blake 1996)

HABITAT: shallow subtidal to outer shelf depths (Blake 1996)

Illustrations:



a-c from Blake (1996)
d. from Jones (1971)
e illustration by DJN

Magelona berkeleyi (continued)

Similar Species:

Magelona sacculata: distinguished by the lateral pouches between setiger 10 and 11 and lack of frontal horns;
Magelona hartmanae: distinguished by the more elongated shape of the prostomium, the presence of pennoned setae on setiger 9, and the narrower dorsal thoracic cirri.

Methyl Green staining patterns can be used to separate these three species (see voucher sheets for *M. sacculata* and *M. hartmanae*).

Comments:

The Methyl Green staining pattern of our individuals differs dramatically from the description of the staining pattern for *M. berkeleyi* from Santa Barbara, Santa Maria Basin area (Blake 1996). This difference needs investigation.

References:

Blake, J.A., 1996. Family Magelonidae Cunningham and Ramage, 1888, in *Taxonomic Atlas of the Benthic Fauna of the Santa Maria Basin and Western Santa Barbara Channel*; eds.: J.A. Blake, B. Hilbig, and P. Scott. Santa Barbara, California: Santa Barbara Museum of Natural History, vol. 6, 253-262 pp.

Jones, M.L., 1971. *Magelona berkeleyi* n.sp. from Puget Sound (Annelida: Polychaeta), with a further redescription of *Magelona longicornis* Johnson and consideration of recently described species of *Magelona*. *Journal Fisheries Research Board of Canada*, v. 28, no.10, pp. 1445-1454.

Revision History: