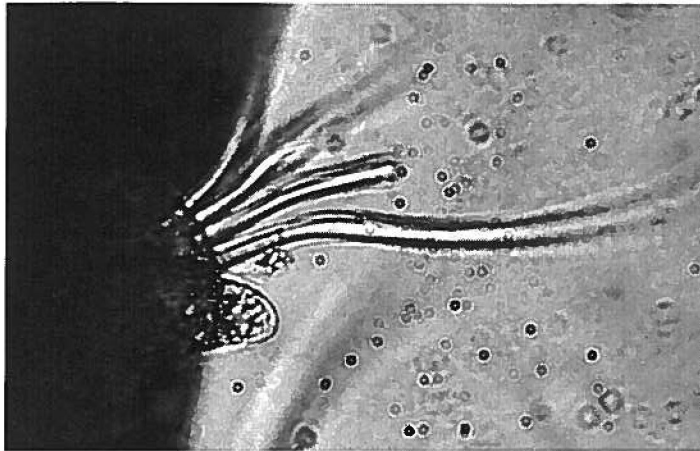
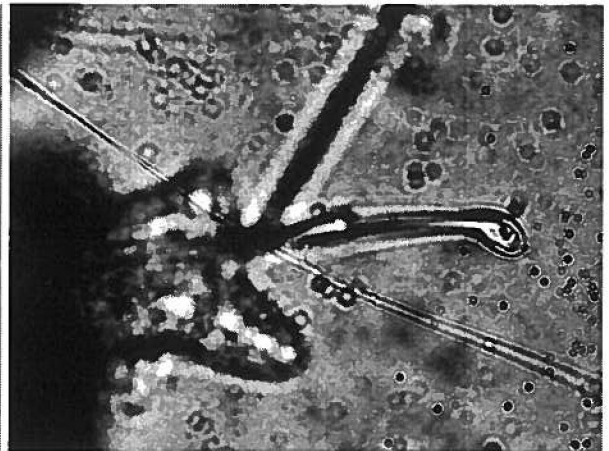


Scoletoma tetraura of SCAMIT

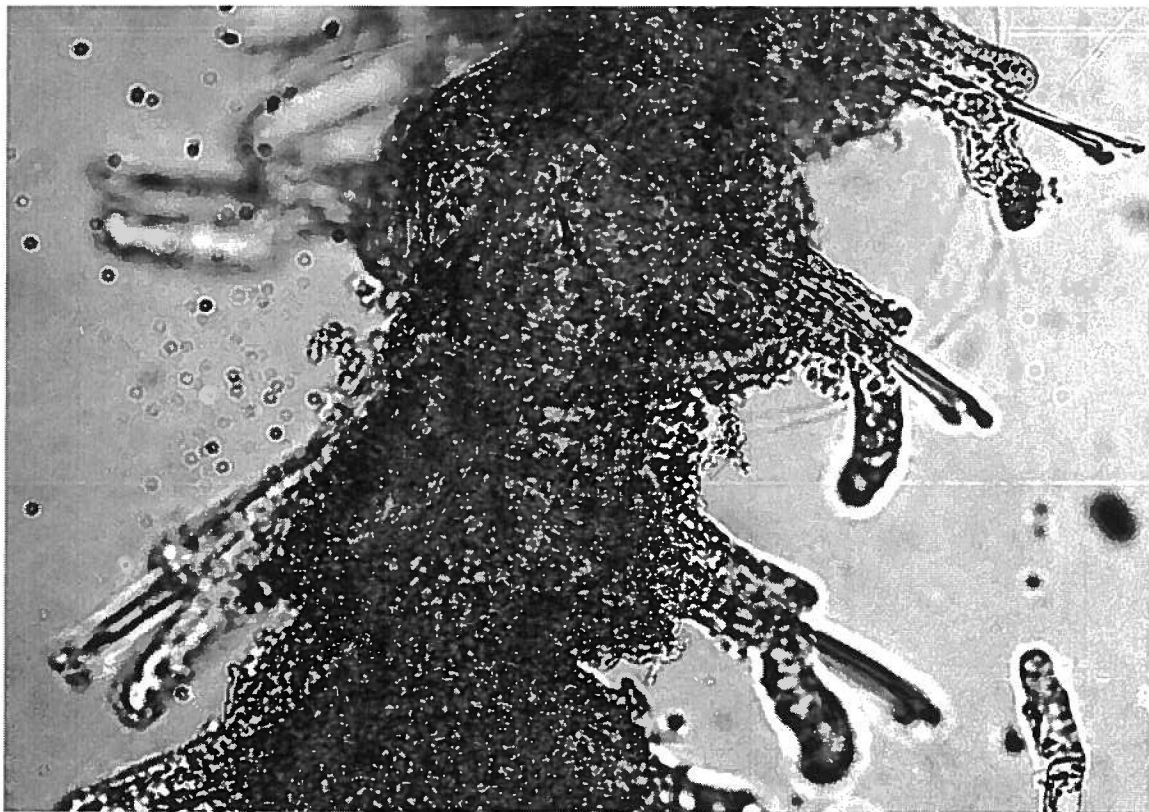
For all images
Anterior ↑
is toward top of page



Anterior setiger



Median setiger



Posterior setigers

The offshore *S. tetraura* of SCAMIT (which may be synonymous with *Lumbrineris luti*) have simple setae from the first setiger like *S. sp C*, but have only prolonged postsetal lobes posteriorly. According to Leslie Harris *S. tetraura* sensu stricto differs in prostomial shape from *S. tetraura* of SCAMIT and should be found in shallower waters, possibly embayments. Previous use of the name *Scoletoma tetraura* in S. Cal. may represent a species complex.

The images were collected by K. Barwick and L. Lovell at the SCAMIT meeting 9April2001