



# City and County of San Francisco Voucher Sheet

Voucher #: P435

Taxa: Polychaeta: Lumbrineridae

Species: *Scoletoma luti*

Authority: (Berkeley & Berkeley, 1945)

Original Prep. Date: 29 Jul 1999

Common Synonyms: *Lumbrineris luti*

Prepared By: D. Norris

Berkeley & Berkeley, 1945

Species Code: Sco\_luti

## Voucher Information

SAMPLE NUMBER	STATION	SAMPLE DATE	NUMBER OF SPECIMENS	COMMENTS/NOTES
BSSWB202	25	26 Aug 93	15	1 mm sieve size, KL
BSSWC002	02	05 Oct 82	1	Verified by L. Harris Jan 91, label disintegrated
BSSWC189	28	16 Oct 92	16	1 mm sieve size, KL
BSSWA001	01	05 Oct 82	7	Verified by L. Harris Jan 91, AMN

### Characters:

- Hooded hooks are simple and begin on setiger 1
- Acicula are pale yellow
- Body uniformly yellow in preservation (no banding pigment pattern)
- Posterior segments with elongated, tapering postsetal lobes (a)
- Jaw has 5 maxillae (b).
- Pygidium has two lateral cirri and two ventral. The length of the ventral cirri will vary in length but are usually smaller than the lateral (see comments).

### Illustrations:

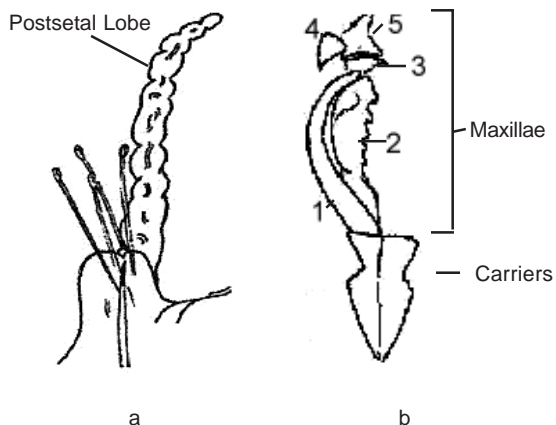


Figure a: from Berkeley & Berkeley (1948)  
 Figure b: illustration by Dot Norris,

### Additional Information:

DISTRIBUTION: Northern California to Vancouver Island  
 HABITAT: to 120 ft. in dense mud

### Related Species:

Members of this family have very similar head and thoracic morphological characteristics. Other species of Lumbrineridae with yellow acicula and simple hooks, which are missing their posterior segments, can be mis-identified as *S. luti*. Taxonomist should examine the fragment vial for posterior segments of other species of Lumbrineridae when this species is present (see Laboratory Taxonomic Conventions).

### Comments:

The genera of Lumbrineridae were revised by Frame (1992). See Larry Lovell's revised key to the Lumbrinerid genera submitted to SCAMIT in April 2001 (vol. 19, no. 12).

Frame also observed variation in the pygidial cirri morphology in her description of *Scoletoma hebes* (Frame 1992).

***Scoletoma luti*** (continued)

**References:**

- Banse, K. and K. D. Hobson. 1974. Benthic Errantiate Polychaetes of British Columbia and Washington. *Bull. Fish. Res. Bd. Canada* 185:111.
- Berkeley, E. and C. Berkeley. 1948. Canadian Pacific fauna: Polychaeta Errantia. *Fish. Reg. Bd. Canada* 9(1):100.
- Frame, A. 1992. The Lumbrinerids (Annelida: Polychaeta) collected in two Northwestern Atlantic surveys with descriptions of a new genus and two new species. *Proc. Biol. Soc. Wash.* 105(2):185-218.

**Revision History:**

29 Jul 1999	DJN	Original voucher sheet
15 Aug 2003	SMc	Import into PageMaker and update conventions
04 Nov 2003	DJN	Edits and current conventions
05 Jan 2004	DJN	Clarification of characteristics - eliminate description of mandibles (not a useful character)
29 Jan 2006	DJN	add observation of pygidial variation