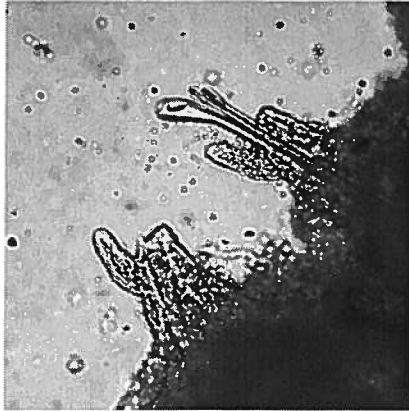
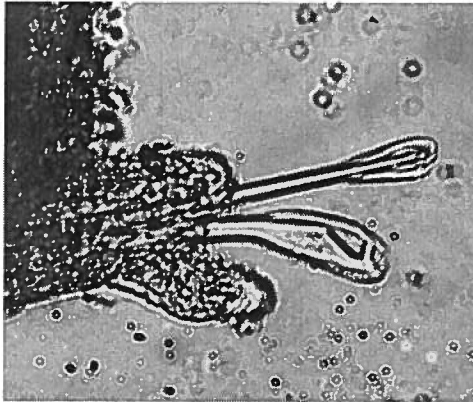


For all images
Anterior ↑
is toward top of page

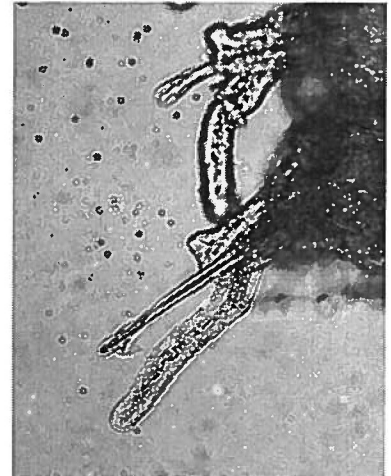
***Scoletoma* sp A (fide Harris)**



Median setigers

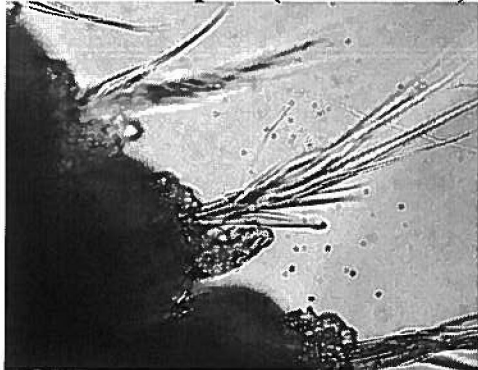


Posteriomedian setiger

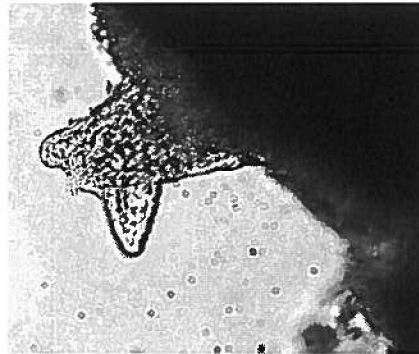


Posterior setigers

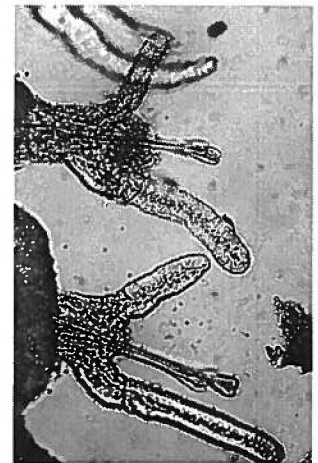
***Scoletoma* sp B (fide Harris)**



Anterior setigers

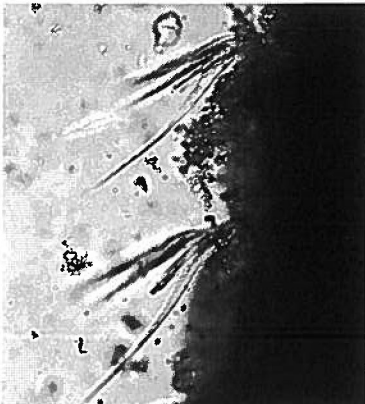


Median setigers

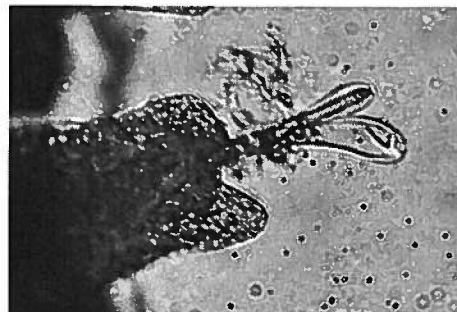


Posterior setigers

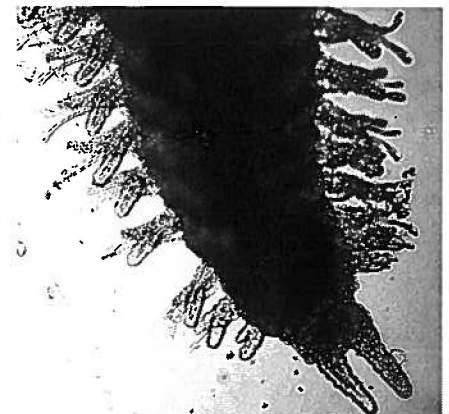
***Scoletoma* sp C (fide Harris)**



Anterior setigers



Median setigers



Posterior setigers

These provisional species were found in shallow embayments. They are long, thin worms and often numerous where they are encountered. The offshore *S. tetraura* of SCAMIT have simple setae from the first setiger like *S. sp C*, but have only prolonged postsetal lobes posteriorly.