



## City and County of San Francisco Voucher Sheet

Voucher #: P490

Taxa: Polychaeta: Dorvilleidae

Original Prep.Date: 20 Sep 2007

Prepared By: Dot Norris

Species Code: Sch\_annulata

Species: *Schistomeringos annulata*

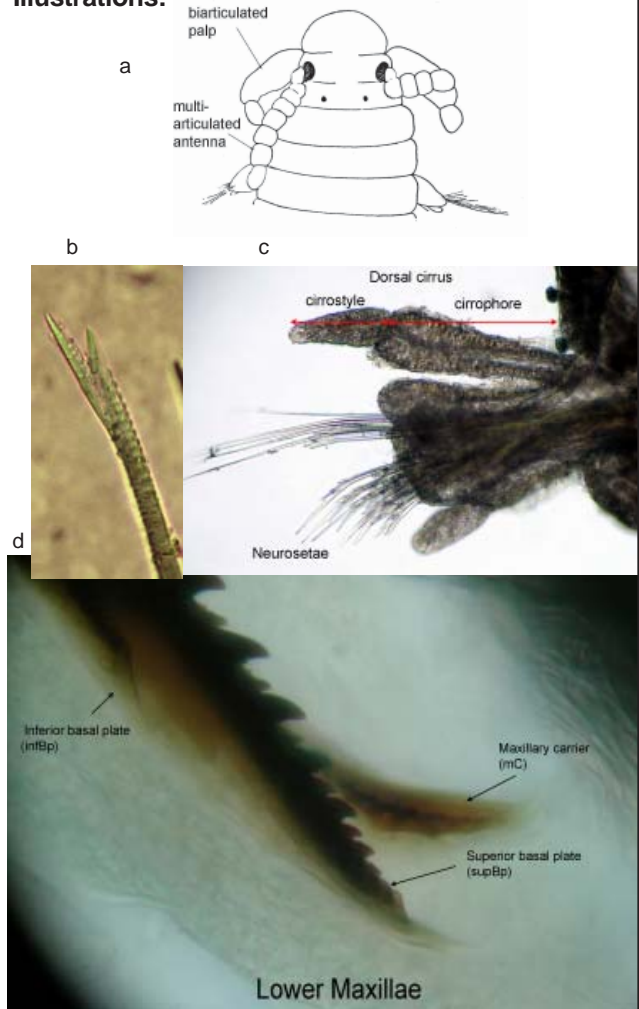
Authority: (Moore, 1906)

Common Synonyms: *Dorvillea rudolphi* of CCSF

### Characters:

- Prostomium with a pair of biarticulate palps, a pair of multiarticulated antennae and two pairs of dark eyes (one pair located near the base of the antennae and a small pair is located dorsal and posterior to the antennae)(a).
- Furcate setae number about 3 per parapodia, the short tine is about half as long as the long tine (b).
- First setiger without a dorsal cirrus.
- Dorsal cirri longer than the parapoda in the anterior segments. The cirrophore is inflated distally and the cirrostyle tapers to a rounded end (c).
- Ventral cirri is subdistally located but extends beyond the parapoda (c)
- Posterior ends of the maxillae are free from each other (d).
- Neurosetae are composite hooks with variable length blades, the longest are in the superior (dorsal most) position and are about 3x the length of the shortest (c).

### Illustrations:



a adapted from Jumars 1974

b,c and d photographed by D. Norris from specimen in vial 1 with Hilbig's (1995) structure codes in parenthesis in d.

### Additional Information:

(Faucald 1970)

Type area Port Townsend, Washington, to western Mexico.

### Similar Species:

*Schistomeringos rudolphi* - similar in most characters, differs in the number of furcate setae per parapodia ( 2 instead of 3) and has fused maxillae. Fortunately, this species does not occur in the Pacific (Jumars 1974), see comments.

*Schistomeringos longicornuta* - has fused maxillae, the small tine is about one third the size of the long tine on the furcate setae and has short cylindrical dorsal cirri (see comments).

***Schistomeringos cf. annulata*** (continued)

**Comments:**

This species has been confused with *Schistomeringos* (formally *Dorvillea*) *rudolphi*, however in Jumar's diagnosis (Jumars 1974), he showed that there is a definite difference in the specimens collected from the type locality (Naples) and the specimens collected in California. He used jaw, setal and parapodial structures in his comparisons and concluded that *S. rudolphi* does not occur on our coast and that the specimens collected in California belong to the species *Schistomeringos longiconuta*. *S. longicornuta* differs with our species in the relative length of the small tine compared to the long tine on the furcate setae, and has fused maxillae.

In Hilbig's 1996 description of *S. annulata* describes the species as having fused basis of the maxillae and different parapodial structures (retractable ventral lobe). Faucauld contends that the presence or absence of fused maxillae is a defining character of a species, and describes *S. annulata* as having free basis to the maxillae (Faucauld 1970). Therefore Hilbig's description of *S. annulata* may be an undescribed species and should not be used for identification.

*Schistomeringos* was formally a subgenera of *Dorvillea* and includes all *Dorvillea* with furcate setae.

The original description of *S. annulata* describes elongated simple hook notoseta which has not been observed in our specimens (Moore 1906). It is unknown if the setae changes with epitokeous conditions within this species, therefore we have decided to add the 'cf.' designation to this identification.

**References:**

- Faucauld K., 1970. Polychaetous annelids of the families Eunicidae, Lumbrineridae, Iphitimidae, Arabellidae, Lysaretidae and Dorvilleidae from Western Mexico. no.5 Los Angeles California: Allan Hancock Foundation, University of Southern California.
- Hilbig B., 1995. Family Dorvilleidae Chamberlin, 1919. in : Blake J. A., Hilbig B., Scott P., ed. *Taxonomic Atlas of the Benthic Fauna of the Santa Maria Basin and Western Santa Barbara Channel*. 1st ed. Volume 5. Santa Barbara, CA: Santa Barbara Museum of Natural History. The Annelida, Part 2. pp. 378.
- Jumars P. A., 1974. A generic revision of the Dorvilleidae (Polychaeta), with six new species from the deep North Pacific. *Journal of the Linnean Society of London, Zoology*. Volume 54. p 101-35.
- Moore J. P., 1906. Additional New Species of Polychaeta from the North Pacific. *Proceedings of the Academy of Natural Sciences of Philadelphia* :217-59.

**Voucher Specimens**

Vial Number	Sample Number	Station	Sample Date	Number of Specimens	Comments
NN	NNNNNNNN	NN	DD Mmm YEAR	NN	TEXT TEXT TEXT