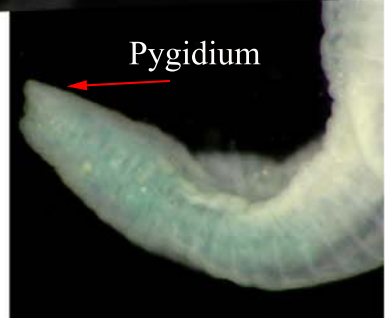
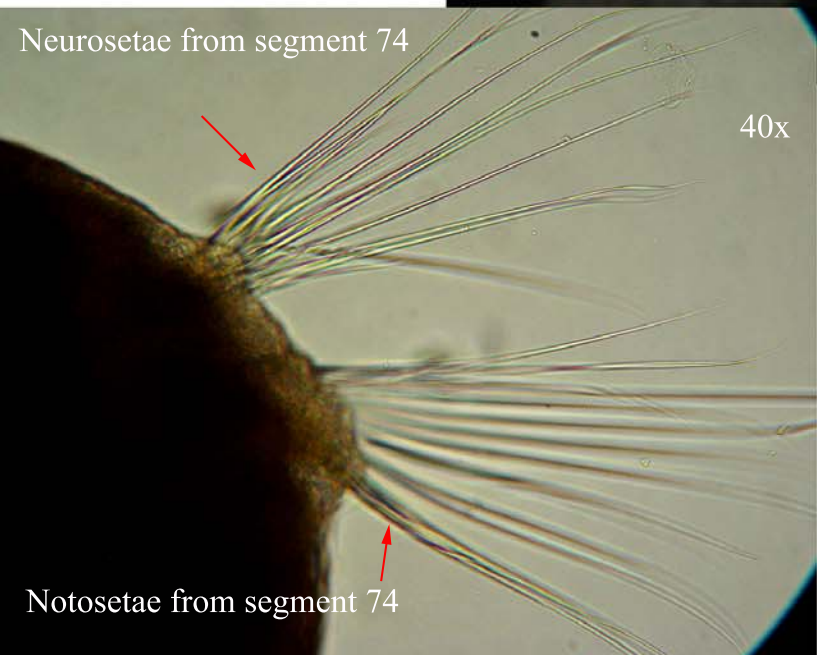
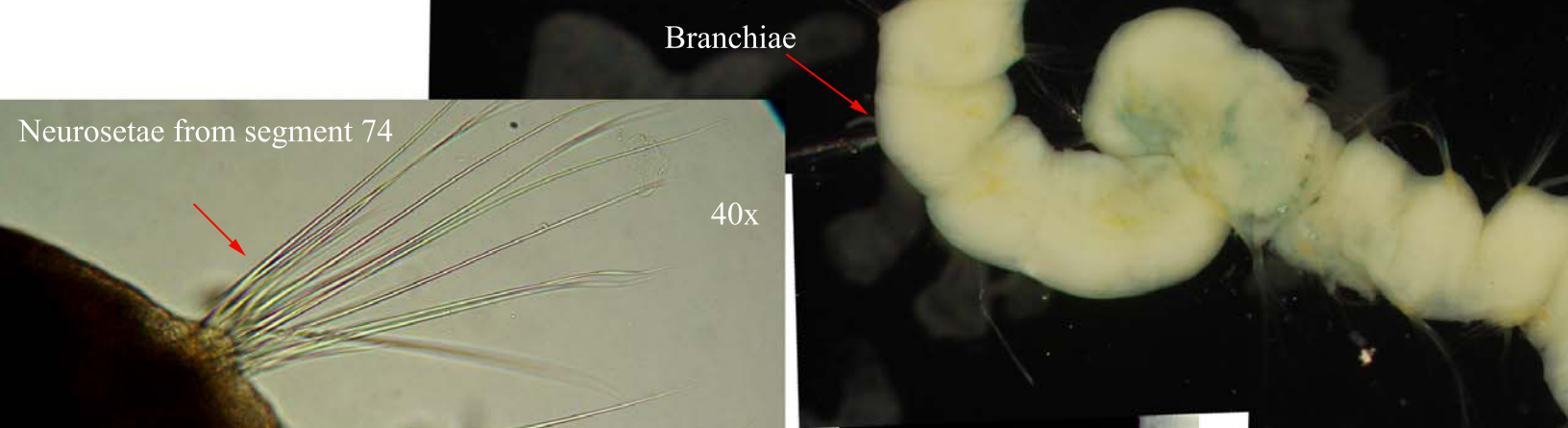


Neurosetae from segment 74 with very slight serrations at 100x oil

Organism with ~130 segments
No methyl green staining pattern

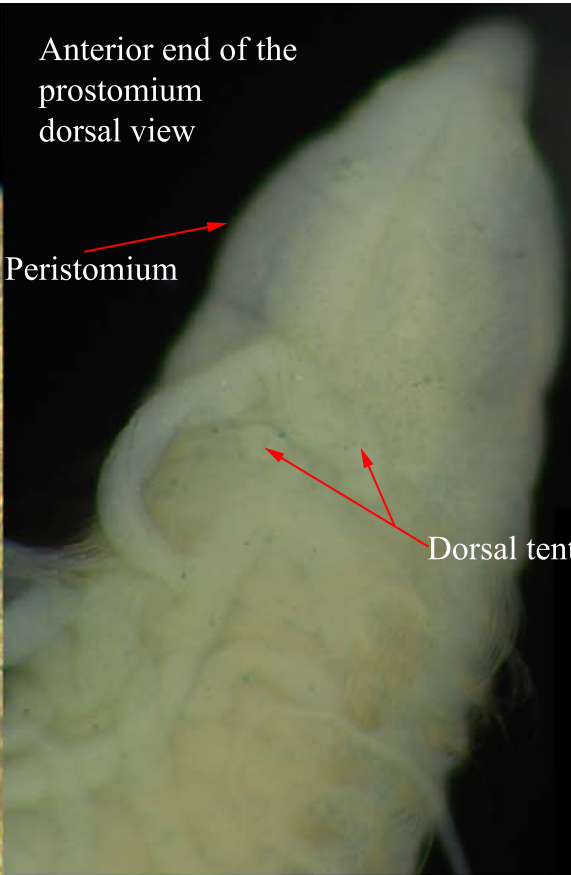


Aphelochaeta glandaria

Blake, 1996

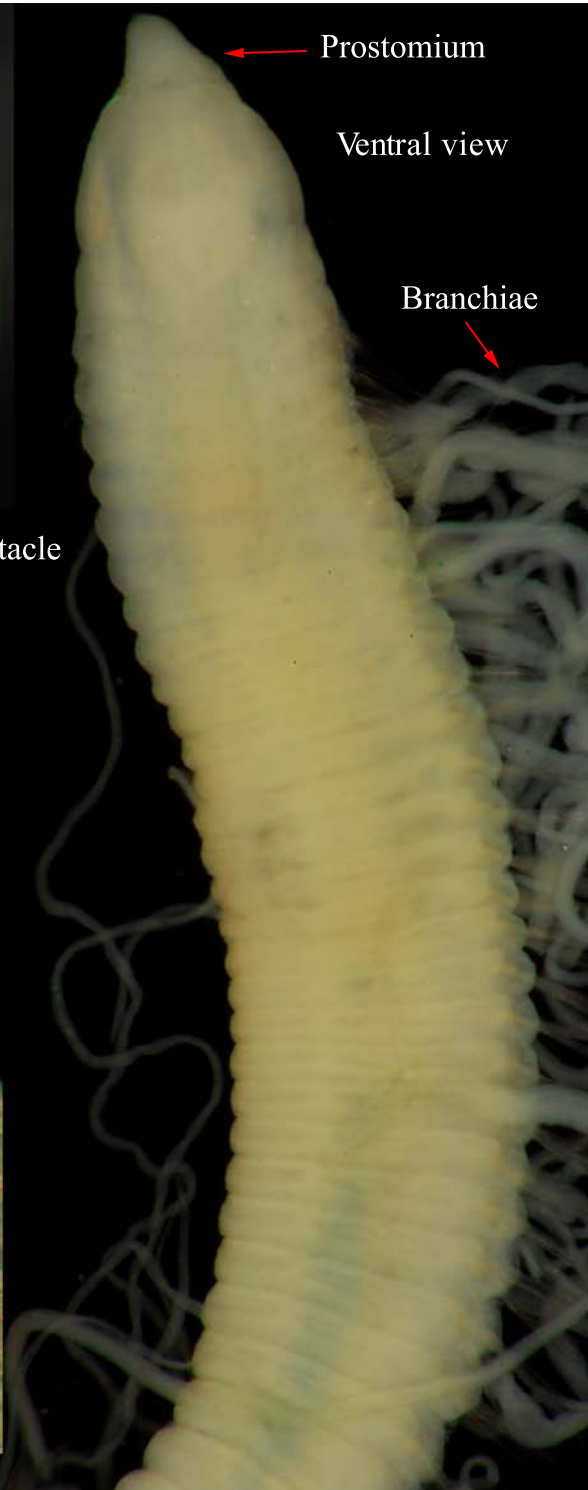


Peristomium



Anterior end of the prostomium dorsal view

Dorsal tentacle

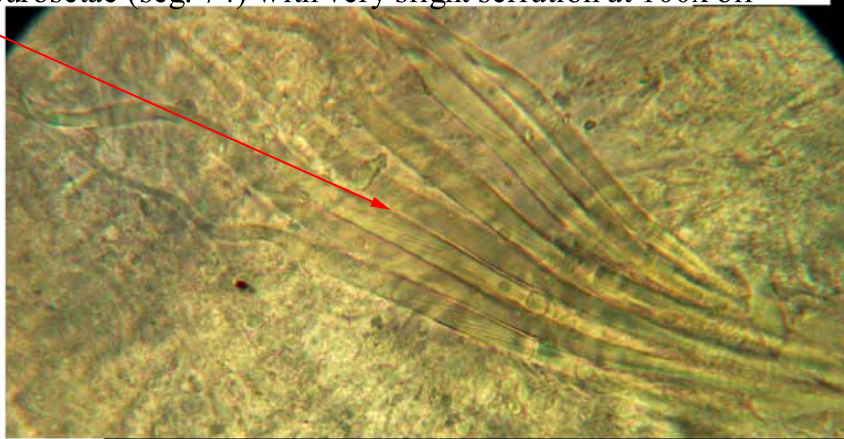


Prostomium

Ventral view

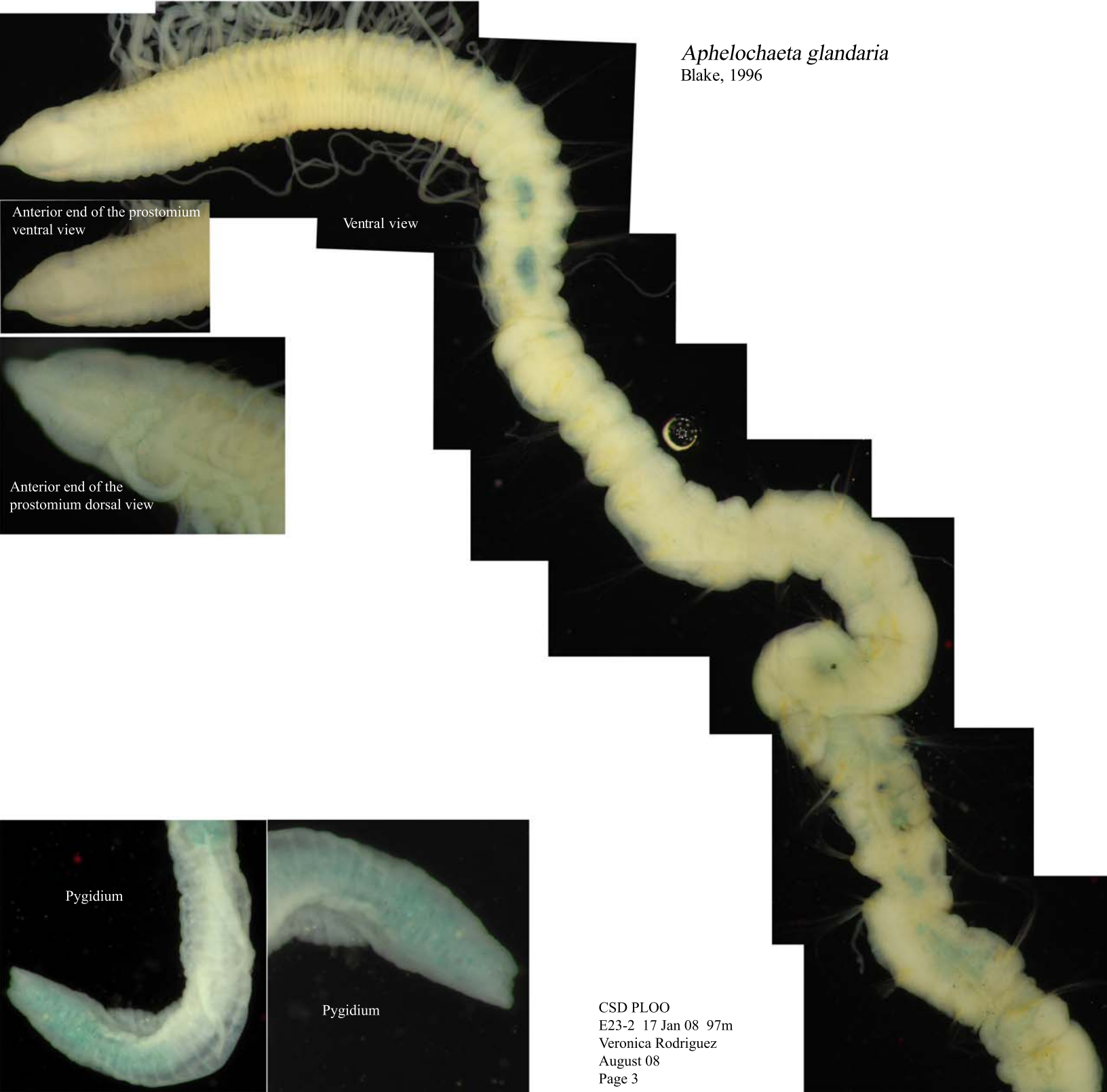
Branchiae

Abdominal neurosetae (seg. 74) with very slight serration at 100x oil



Aphelochaeta glandaria

Blake, 1996



Ventral view

Anterior end of the prostomium ventral view

Anterior end of the prostomium dorsal view

Pygidium

Pygidium