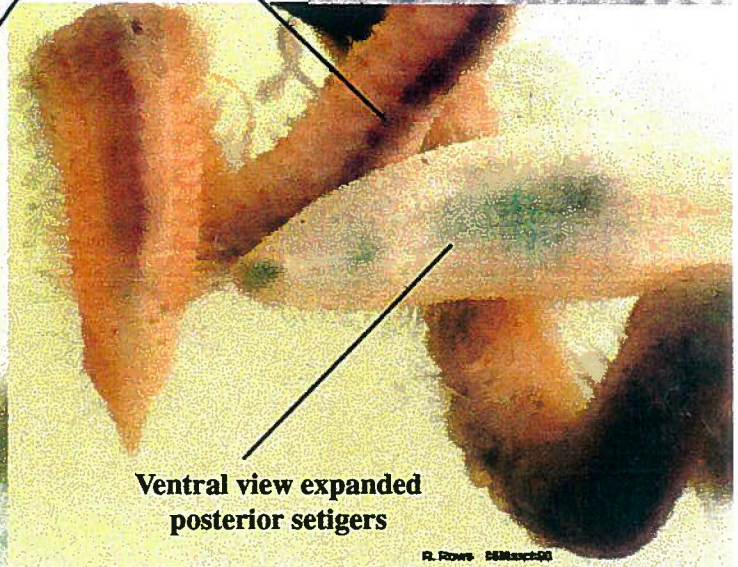
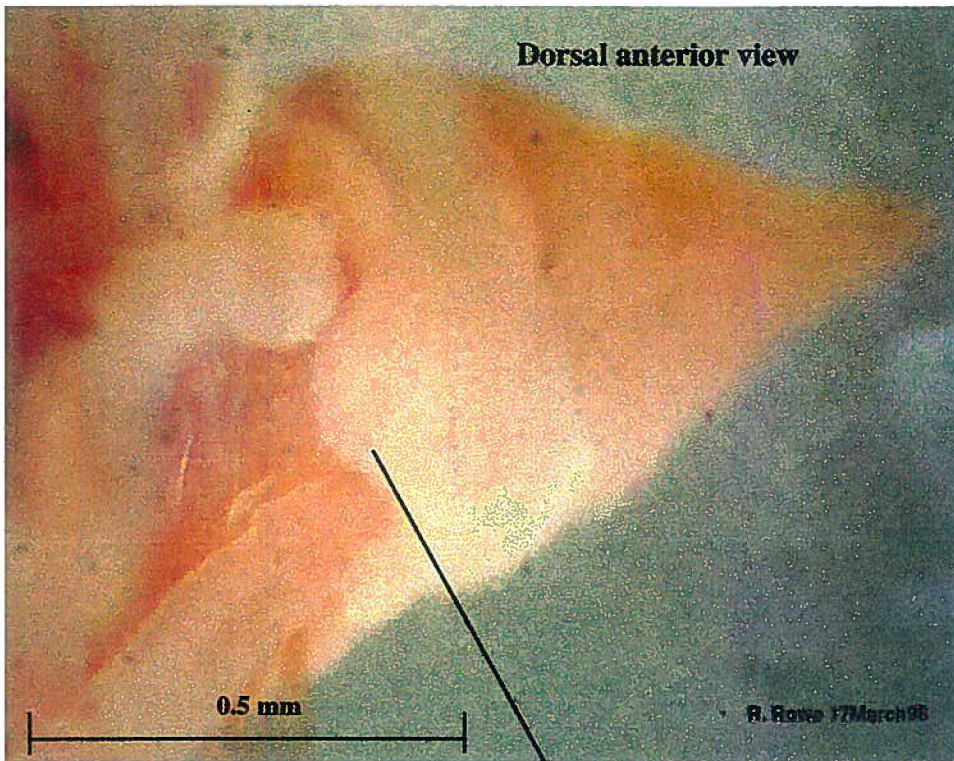


*Monticellina siblina* Blake, 1996

This species can be identified without methyl green staining. Look for:

1. Peristomial dorsal ridge extending between the dorsal tentacles.
2. The darker intestine visible through the body wall.
3. The expanded posterior segments
4. The coarsely serrate, shaggy edged abdominal neurosetae.

(This is a common Pt. Loma species)



Peristomial dorsal ridge

Dark (purplish) intestine

Ventral view expanded posterior setigers