

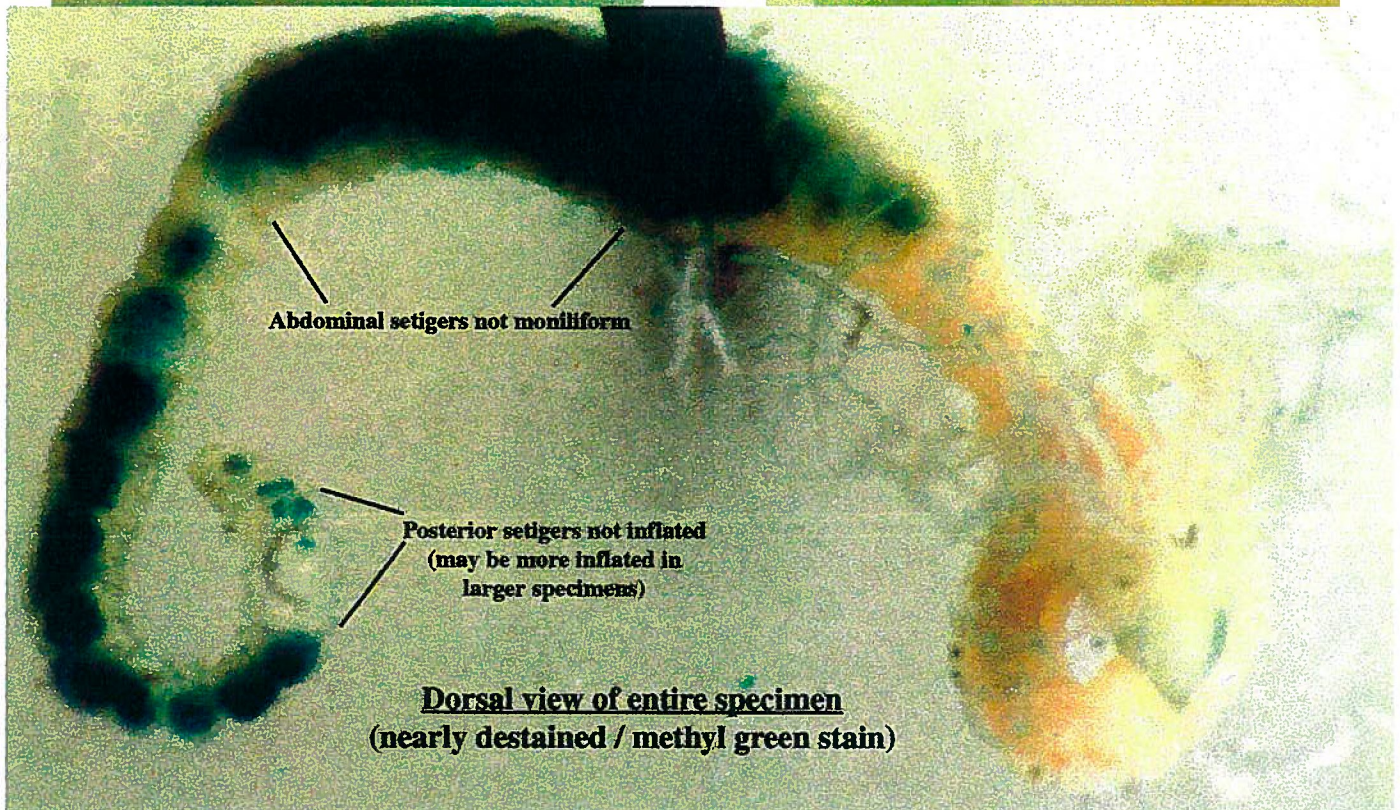
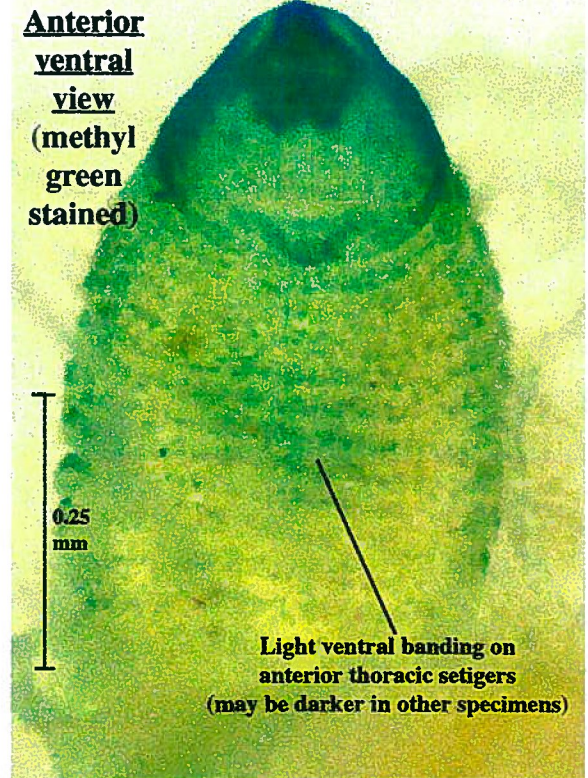
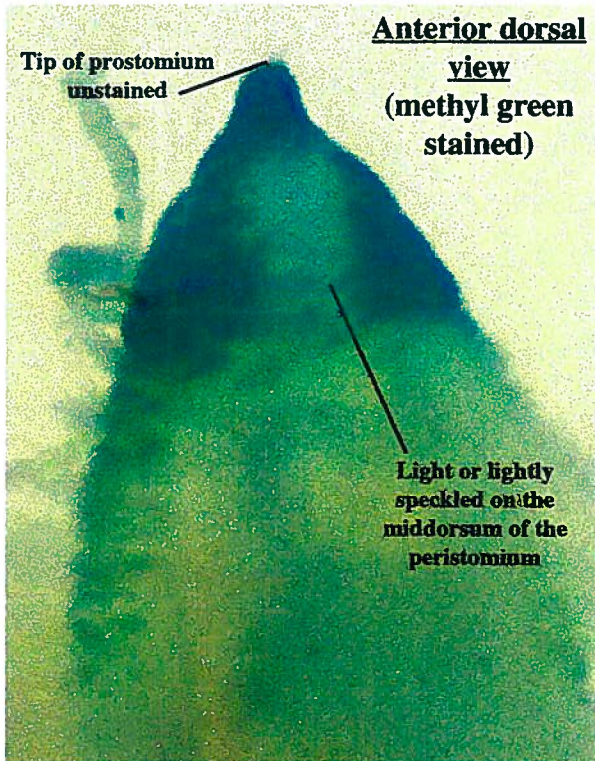
*Aphelochaeta phillipsi* Blake, 1996

This is not a common Pt. Loma lab species

To identify this species look for:

1. Methyl green staining pattern as designated in figures below. (The ventral stain bands on our single specimen are not as obvious as described by Tony Phillips (18Nov96 SCAMIT meeting).
2. Abdominal setigers are not beaded (moniliform) and posterior end is not inflated.

The single specimen figured on this page is from Pt. Loma Ocean Monitoring station B-9 rep.2 7Oct96 322 ft.



Werner