

KEY TO THE CHAETOPTERIDAE OF POINT LOMA

by Dean Pasko/Ron Velarde

2/3/92

1. Ventrums without color pattern; setigers 1-9 short, of equal length (Fig. 1); setiger 4 with several major spines Mesochaetopterus sp.

Ventrums with a combination of light or dark brown and chalky white color pattern (Fig. 2); at least setiger 4 somewhat elongate; setiger 4 with one major spine 2

2. Ventrums with dark brown band on setigers 6 & 7; setigers 7-11 chalky white; peristomial flaps prominent (Fig. 2a); eyes present Spiochaetopterus costarum

Ventrums with light brown band beginning on setiger 5; setigers 6-9 (occasionally 6-11) chalky white; peristomial flaps absent (Figs. 3a & 4a); eyes absent or present 3

3. Eyes present; setiger 5 light brown and setigers 6-9 (occasionally 6-11) chalky white (Fig. 3) Phyllochaetopterus prolifica

Eyes absent; setigers 5 & 6 light brown and setigers 6-8 chalky white (Fig. 4) Phyllochaetopterus limicola

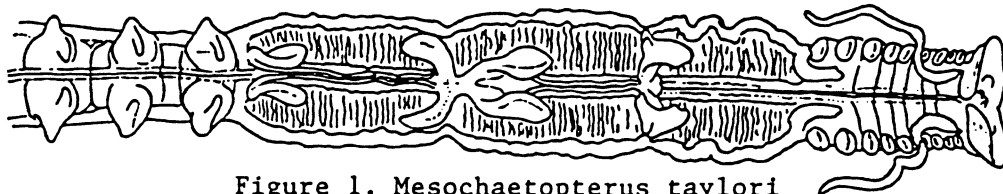


Figure 1. Mesochaetopterus taylori

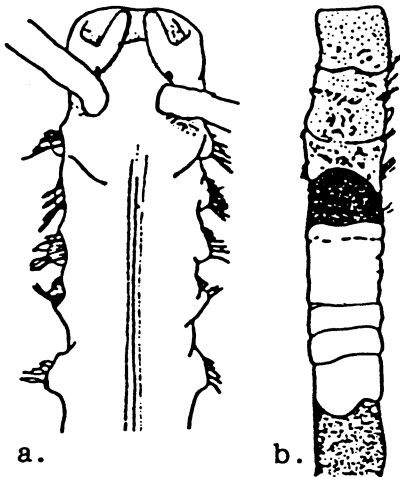


Figure 2. Spiochaetopterus costarum: a) anterior end, dorsal view; b) anterior end, ventral view showing color pattern.

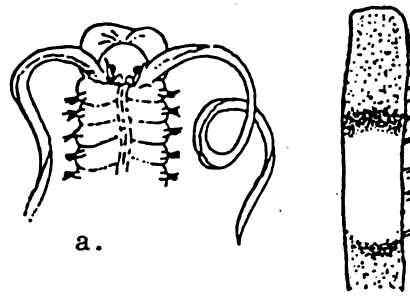


Figure 3. Phyllochaetopterus prolifica: a) anterior end, dorsal view; b) anterior end, ventral view showing color pattern.

Figure 4. Phyllochaetopterus limicola: a) anterior end, dorsal view; b) anterior end, ventral view showing color pattern.

