

CITY OF SAN DIEGO VOUCHER SHEET

Species: *Notomastus latericeus*
Authority: Sars, 1851
Common Synonyms:

Taxon: Annelida: Capitellidae

Date: August 23, 1995

By: R. Rowe

Voucher Specimen(s):

Station Date Depth Storage Location Voucher #
 PSDBE 18390 7/15/94 42m. SCBPP VOUCHER #0031

Characters (used in lab to confirm ID):

1. Branchial lobes pointed (fig. 1)
2. Biramous first setiger
3. Eleven thoracic setigers with capillaries only
4. First segment asetigerous
5. No nephridial pores present in last several thoracic setigers (look in intersegmental furrow midlaterally)
6. Thoracic segments are biannulate=midsegmental furrow present
7. Methyl green staining pattern= double stripes encircle abdominal segments (one stripe ant. and one stripe post. of neurosetal fascicle) and large dark dorsal spots (one pair per segment) on large papillar organs (figs. 2 & 3)

Full Description (cite sources): *Uebelacker, 1984 pg.14-26*

"Prostomium broadly conical, tip blunt; ocular patches present. Thoracic epithelium distinctly areolated through setigers 6-8, becoming increasingly smooth thereafter; segments biannulate. Thorax with capillary setae only in both rami. Transition from thorax to abdomen abrupt. Abdomen with hooded hooks only in both rami. Conspicuous ovoid lateral organ between noto- and neuropodia of most abdominal segments; seven or more pairs of nephridial apertures (usually inconspicuous) from second abdominal segment. Branchiae rudimentary, represented by small dorsolateral swellings of notopodia and large triangular extensions of neuropodia. Hooded hooks multidentate with main fang surmounted by up to 18 minute denticles arranged in three or more rows. Pygidium without appendages."

Illustration (cite sources):



Fig. 1 First abdominal segment (anterior view)



Fig. 2 Papillar organ (lateral view)

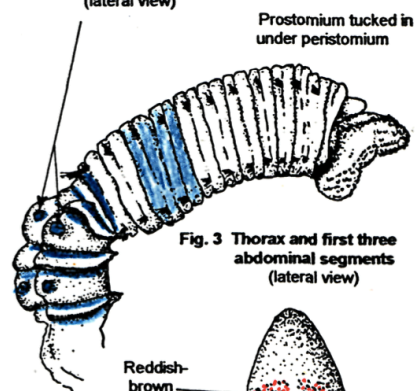


Fig. 3 Thorax and first three abdominal segments (lateral view)

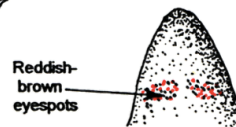


Fig. 4 Prostomium (dorsal view)

Drawings are originals of first listed voucher specimen

Related Species (include character differences):

Notomastus lineatus Claparede, 1870— **Branchial lobes** on first few abdominal segments are rounded not pointed, methyl green stain different, **nephridial pores present laterally, on last few thoracic setigers in intersegmental furrow**

Comments: Fairly large, usually thorax and anterior ~10 abdominal setiger fragments. Found in shallow benthic samples. This species has been confused with *N. lineatus* locally.

References: (See Uebelacker, 1984, vol. 14, page 14-26)