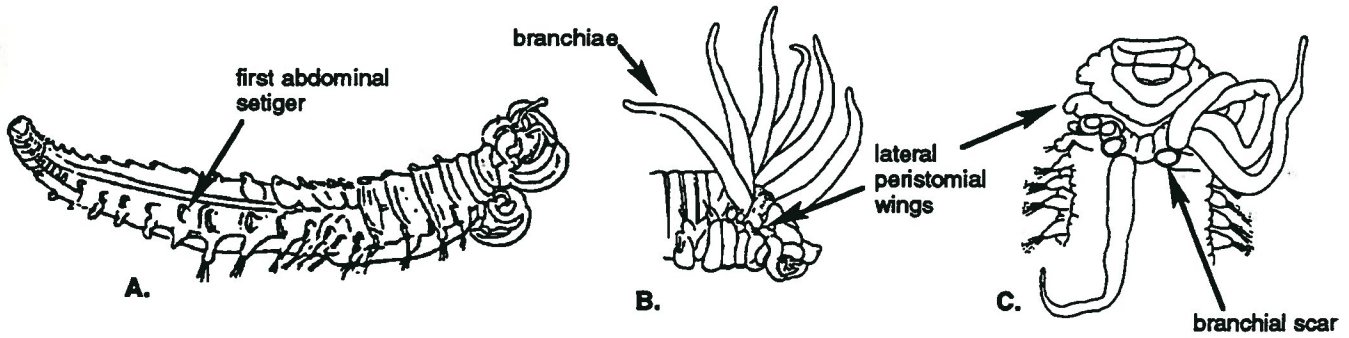
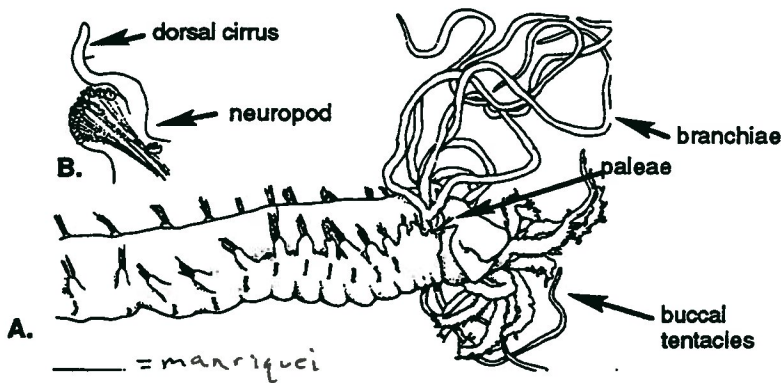


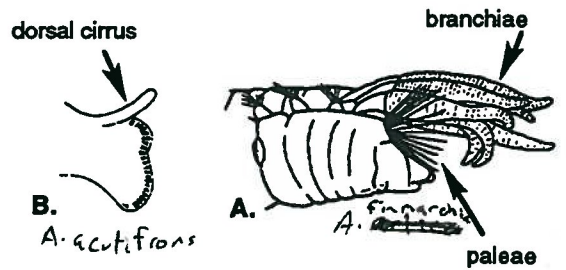
**The Ampharetidae of Point Loma  
(pictorial supplement to tabular key)**



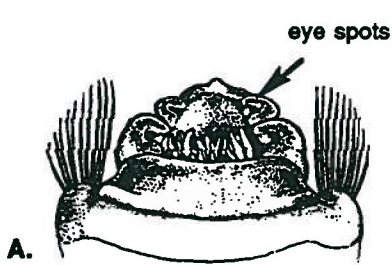
*Paramage scutata*: A. whole animal, ventral view; B. anterior end, lateral view; C. anterior end, dorsal view.



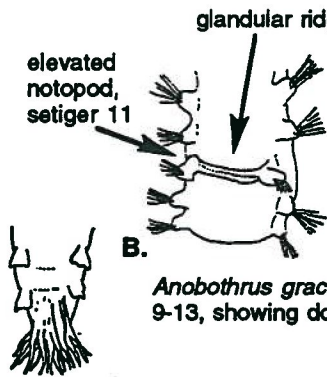
*Sabellides* [sp. 1]: A. anterior end, lateral view; B. abdominal neuropod and dorsal cirrus. (Fig. A = *S. octocirrata* from Uebelacker and Johnson 1984, Fig. 51-16, p. 51-19)



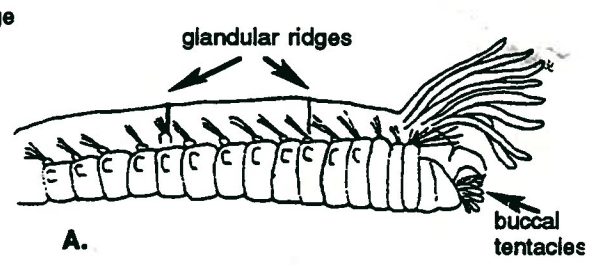
*Ampharete arotica*: A. anterior end, lateral view; B. posterior abdominal setiger (Fig. A = *A. finmarchica* (Sars, 1865) from Hobson, 1981)



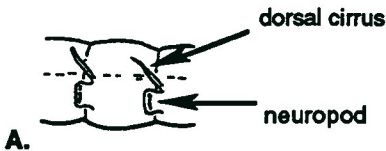
*Ampharete labrops*: A. anterior end, ventral view.



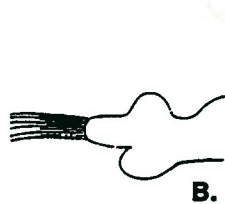
*Ampharete labrops*: B. thoracic setigers 9-13, showing dorsal glandular ridge of setiger 11.



*Ampharete acutifrons*: pygidium showing circlet of anal cirri.



*Asabellides lineata*: A. mid abdominal setigers, ventral view, showing prolonged dorsal cirri.



*Eclisippe trilobata*: A. mid-thoracic setigers, lateral view; B. trilobed posterior thoracic notopod.

note elongation of posterior thoracic setigers and thin, transverse dorsal ridge

