

# *Melinna heterodonta*

Moore 1923

Branchiae long, approximately 3-4 times body width

Branchiae without pigment

Nuchal hooks present

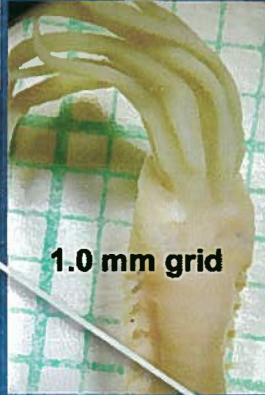
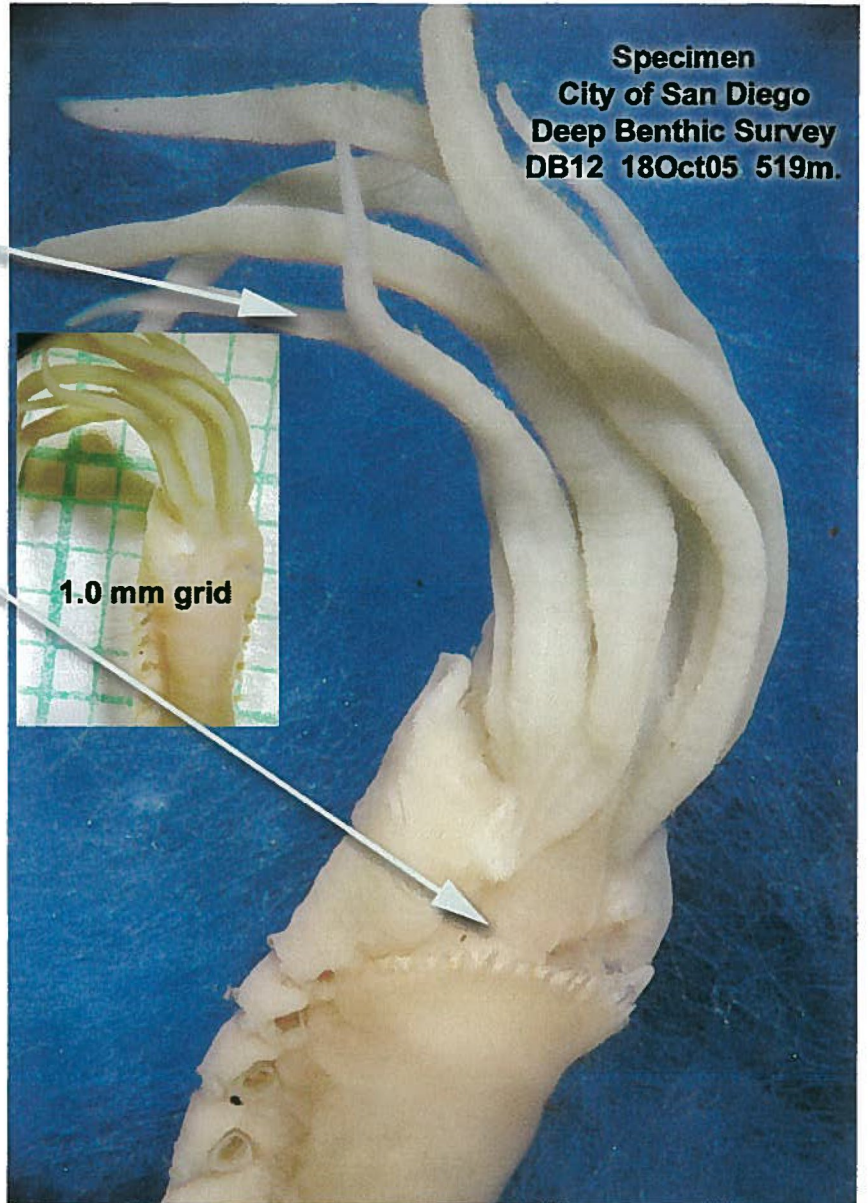
Transverse membrane across most, to nearly all of body width

Transverse membrane with 11-16 "teeth"

Deeper species from slope, canyon, or abyssal depths

Tube thick, constructed of silt and mica flakes

The specimen below is a small *M. heterodonta* similar in size to the *M. oculata* specimen on the accompanying ID sheet. Note the thicker and longer branchiae lacking pigment and the broad transverse shelf with 10+ "teeth". (These intermediate specimens from mid depth are often difficult to identify)



Specimen  
City of San Diego  
Regional Survey  
2138 rep1 15July96 191m.



smaller specimens have sharper, darker hooks