

SCAMIT Code: HYP 51  
LACO 66  
MBC 39

Date Examined: January 13, 1986  
Voucher By Thomas Parker (LACSD)

Literature: Erseus, C. 1982. Taxonomic revision of the marine genus Limnodriloides (Oligochaeta: Tubificidae) Verh. Naturwiss. Ver. Hamburg (NF)25 207-277.

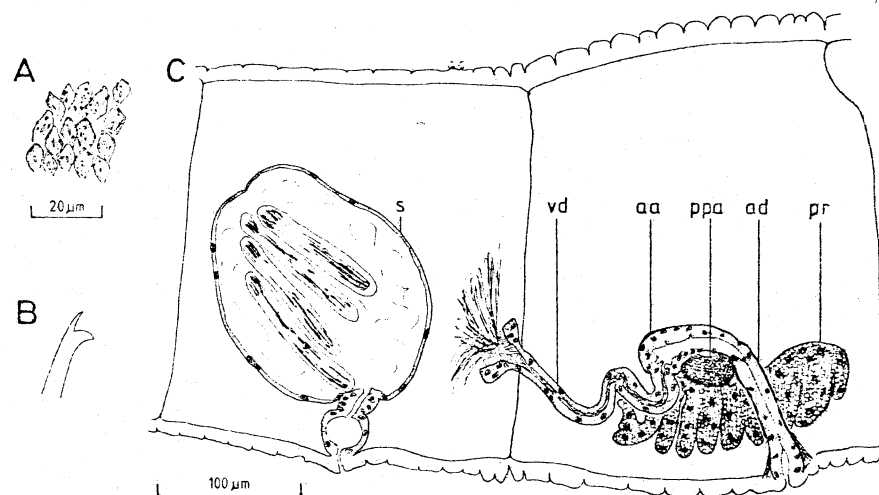
Diagnostic Characters:

1. Body wall densely coated with leaf like protuberances (at least in post clitellar region).
2. Esophageal diverticula absent in segment IX.
3. Setal teeth equally long, but dorsal tooth thinner.
4. Organized bundles of sperm in spermatheca.
5. Prostate gland large and lobed.

Related Species and Differences:

Tectidrilus verrucosus differs by possessing an esophageal diverticula and random sperm arrangement in spermatheca.

Distribution: Subtidal sediments to 305 meters. Only from California.



Tectidrilus diversus Erseus, 1982. A. Body wall papillae. B. Free-hand drawing of seta. C. Lateral view of spermatheca and male genitalia in segments X-XI. From Erseus, 1982.