

330031

Species: Cycloleberis lobiancoi ^{AMERICANA}

Museum Number: 170-T

Describer: Müller Date: 1894 1890 Family: Asteropidae

Common Name: _____

Source: Müller: Das Terreich: 31: 1912.

Sharpe: A Further Report on the Ostracoda of the U.S. Natl. Mus: 1908

Synonymy: Cylindroleberis lobiancoi Location: _____

SEE BAKER 1975

Distinguishing Characteristics:

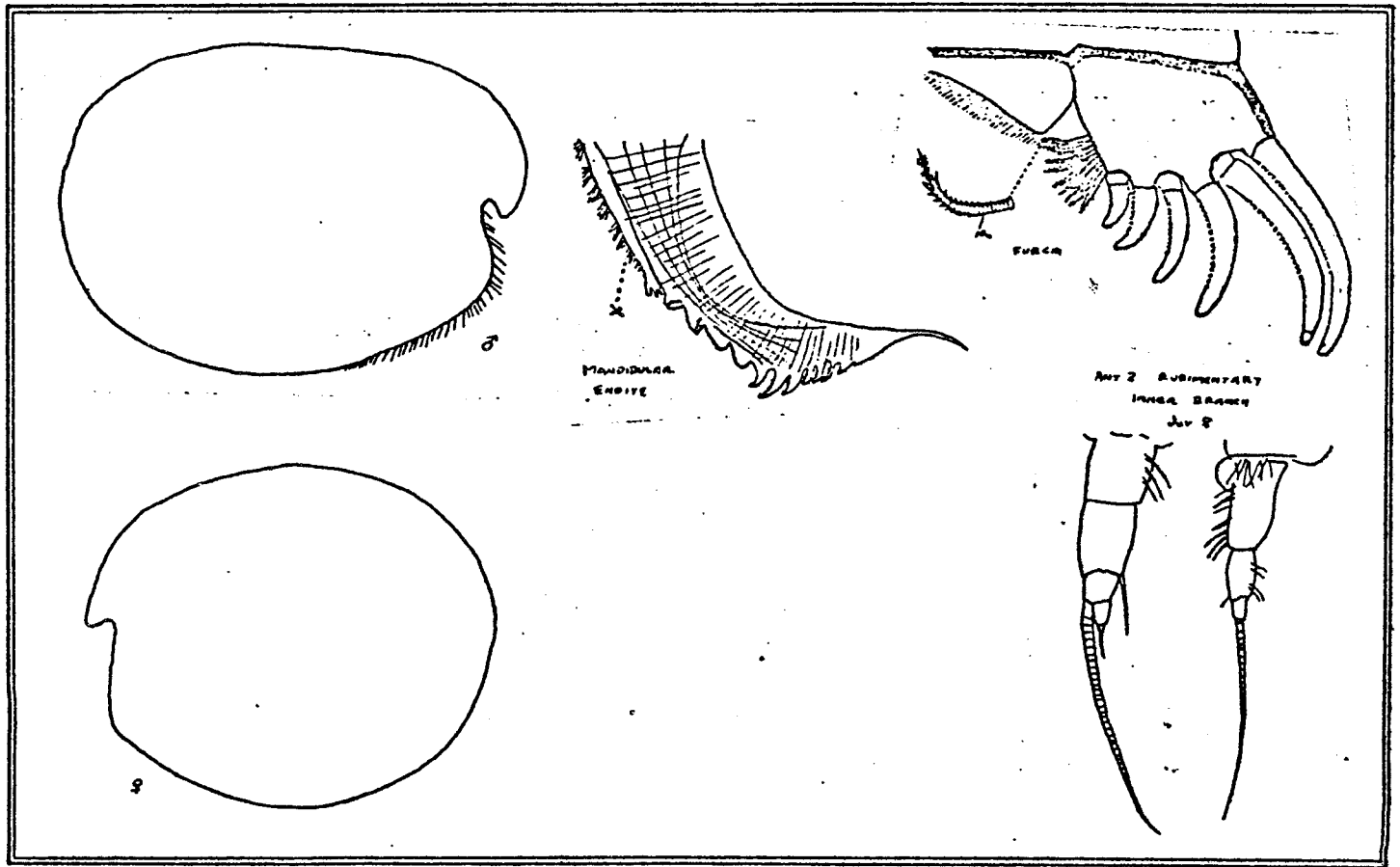
Shell of ♀ almost circular in outline; shell of ♂ slightly longer.

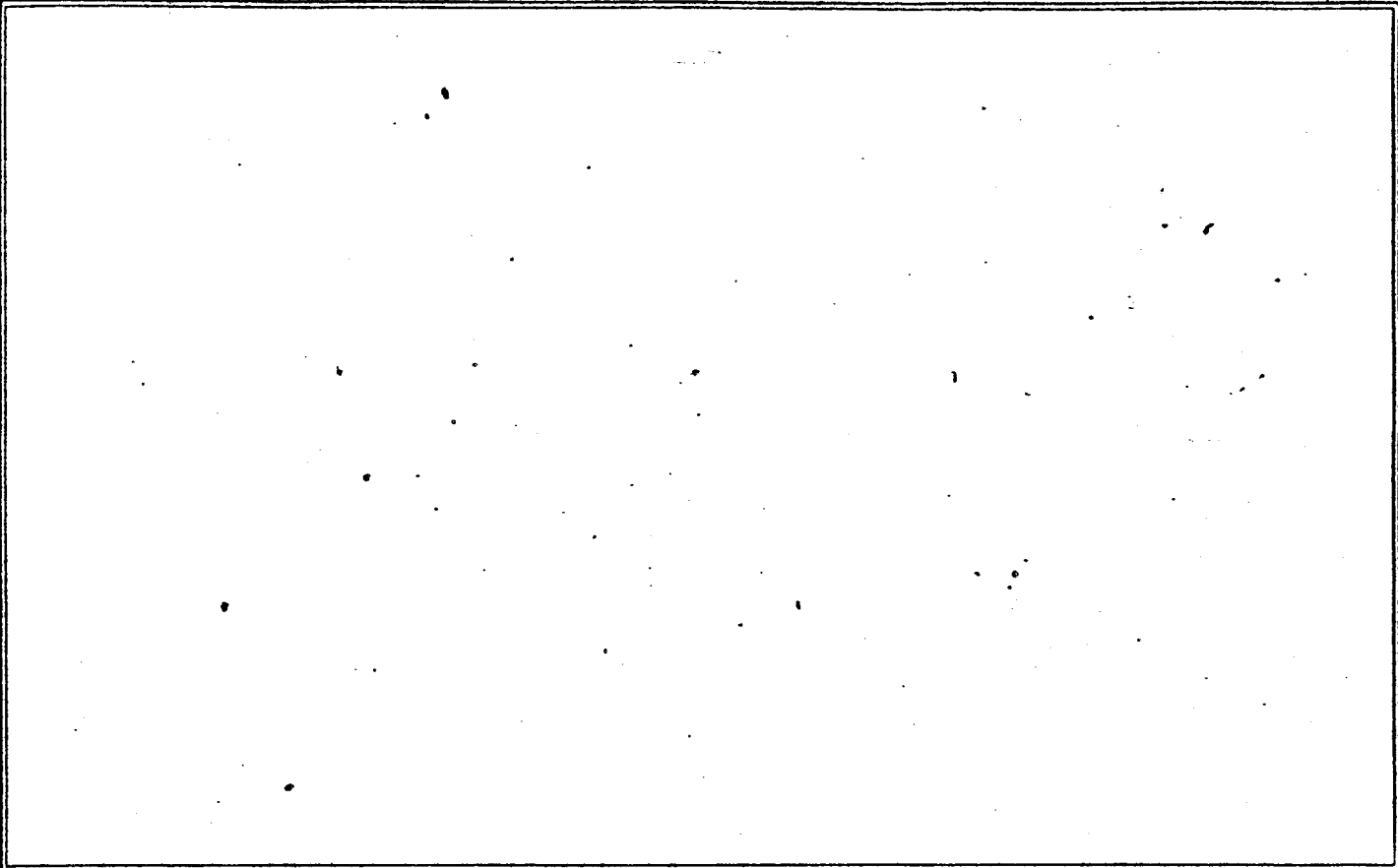
Rostral sinus narrow, oblique, slightly above middle.

Caudal furca with 3 pair of strong toothed claws followed by 7-9 curved seta like spines. Claws toothed except at tip.

Eyespot present through carapace.

4.7 mm





Ovigerous: J F M A M J J A S O N D

Juvenile: J F M A M J J A S O N D

1	2	3	4	
IBP	IBP	IBP	IBP	
MSGR	MSGR	MSGR	MSGR	
5	6	7	8	
IBP	IBP	IBP	IBP	
MSGR	MSGR	MSGR	MSGR	
9	10	11	12	
IBP	IBP	IBP	IBP	
MSGR	MSGR	MSGR	MSGR	
13	14	15	16	
IBP	IBP	IBP	IBP	
MSGR	MSGR	MSGR	MSGR	
17	18	19	20	
IBP	IBP	IBP	IBP	
MSGR	MSGR	MSGR	MSGR	
21	22	23	24	
IBP	IBP	IBP	IBP	
MSGR	MSGR	MSGR	MSGR	
25	26	27	28	
IBP	IBP	IBP	IBP	
MSGR	MSGR	MSGR	MSGR	
29	30	31	32	
IBP	IBP	IBP	IBP	
MSGR	MSGR	MSGR	MSGR	
33	34	35	36	
IBP	IBP	IBP	IBP	
MSGR	MSGR	MSGR	MSGR	
37	38	39	40	41
IBP	IBP	IBP	IBP	IBP
MSGR	MSGR	MSGR	MSGR	MSGR
42	43	44	45	46
IBP	IBP	IBP	IBP	IBP
MSGR	MSGR	MSGR	MSGR	MSGR

Remarks:

Mediterranean
Catalina Island
30', "72"
SAN DIEGO BAY NUC (own)
MONTEREY BAY

I Intertidal
 B benthic
 P pelagic
 M mud
 S sand
 G gravel
 R rock

