



# City and County of San Francisco Voucher Sheet

Voucher #: P1015

Taxa: Polychaeta: Terebellidae

Species: *Pista sp.* SF1

Original Prep.Date: 29 Apr 2004

Authority:

Prepared By: D. Norris

Common Synonyms: *Pista sp. A*, CCSF

Species Code: PISTA\_SP\_SF1

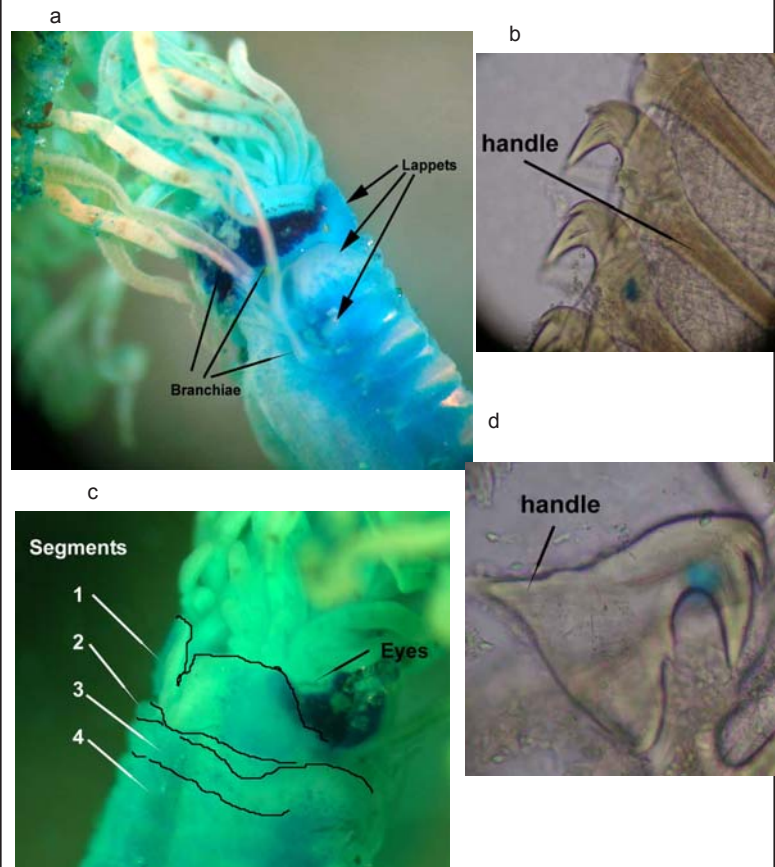
## Voucher Information

SAMPLE NUMBER	STATION	SAMPLE DATE	NUMBER OF SPECIMENS	COMMENTS/NOTES
0309102568	76	9 Sep 03	2	2 whole specimens, one with tube
SWOOA153	34	11 Sep 00	1	large head fragment, formerly vouchered as <i>Pista spp.</i> (P1020)
0309112585	37	12 Sep 03	1	juvenile, 18 m depth

### Characters:

- Lappet structure (a) -
  - 1st segment, large, ventral
  - 2nd segment, none
  - 3rd segment, large, dorsal lateral
  - 4th segment, small (1st appearance of notosetae)
- Nephridial pores on segments 6-8 (setigers 3-5), posterior of notosetae
- Branchiae (a) - 3 pair on segments 2-4, arborescent and elongated, 1st pair longest (3x longer than 2nd pair)
- Oral tentacles are banded with pigment (a).
- Methyl Green (a) stains very dark on dorsum of 1st segment (mid-dorsal extended anteriorly) and dorsal edge of lappet. No other lappet stains at all. Light staining on ventral scutes (c) and around notosetae.
- Pygidium - glandular and swollen
- Eyes in a linear arrangement on prostomium (c)
- First neuropodial hooks with crest, lateral teeth and long handles (b), while following setigers have short handled hooks (d)

### Illustrations:



- Dorsal view of small specimen showing lappet structure, branchiae, and staining pattern
- First neurosetae with long handled hooks
- Ventral view of small specimen showing segment count and ventral staining pattern
- Posterior thoracic neurosetae without long handles

## ***Pista* sp. SF1 (continued)**

### **Similar Species:**

*Pista elongata* - also stains dark on segment 1, however stain is separated dorsally and does not split ventrally. *P. elongata* has no eyes and no lappet on the 4th segment.

*Pista pacifica* - similar lappet structure, however posterior thoracic uncini have long handles and 1st thoracic neurosetae distally smooth (no crest or lateral teeth).

*Pista moorei* - First segment lappet large, lateral and stains dark. Branchial filaments arranged in clumps along a long stalk.

### **Comments:**

One specimen found in the *Pista* spp. voucher, from SWOOA153, is in excellent condition and indicates that the lappet on segment 4 elongates as the animal matures. This specimen has been moved to the *Pista* sp. SF1 voucher. The branchiae on this specimen are more constricted perhaps due to the lack of relaxation prior to preservation. Photographs of the setae in the illustration section of this voucher sheet are taken from this specimen.

This organism appears to be the same species described by Susan McCormick in 1987 on her Species Identification Sheet of *Pista* sp. A.

### **References:**

Hartman, O. 1969. *Atlas of the Sedentariate Polychaetous Annelids From California*. pp. 627. Los Angeles, California: Allen Hancock Foundation, USC. Pp. 812.

Harris, L. 2001. *Pista* lateral lappet chart for SCAMIT (handout not in newsletter).

Harris, L. 2002. *Pista* spp. drawings, morphology and stain patterns. CD published for SCAMIT.

Hilbig, B. 2000. Family Terebellidae Grube, 1851. in *Taxonomic Atlas of the Benthic Fauna of the Santa Maria Basin and the Western Santa Barbara Channel*, vol. 7 - The Annelida Part 4 (Polychaeta: Flabelligeridae to Sternaspidae), editors J. A. Blake, B. Hilbig, and P. Scott. Santa Barbara, CA: Santa Barbara Museum of Natural History. Pp. 242-44.

Hobson, K. D. and K. Banse. 1981. Sedentariate and archiannelid polychaetes of British Columbia and Washington. *Canadian Bulletin of Fisheries and Aquatic Sciences* v.209:145.

### **Revision History:**