



# CITY OF SAN DIEGO VOUCHER SHEET

**Species:** *Apionsoma* sp SD1

**Authority:**

**Common Synonyms:**

*Apionsoma* ? *murinae* of CSDMWWD

**Taxon:** Sipunculida: Phascolosomatidae

**Date:** 20 December 1997

**By:** Dean Pasko

**Voucher Specimen(s):**

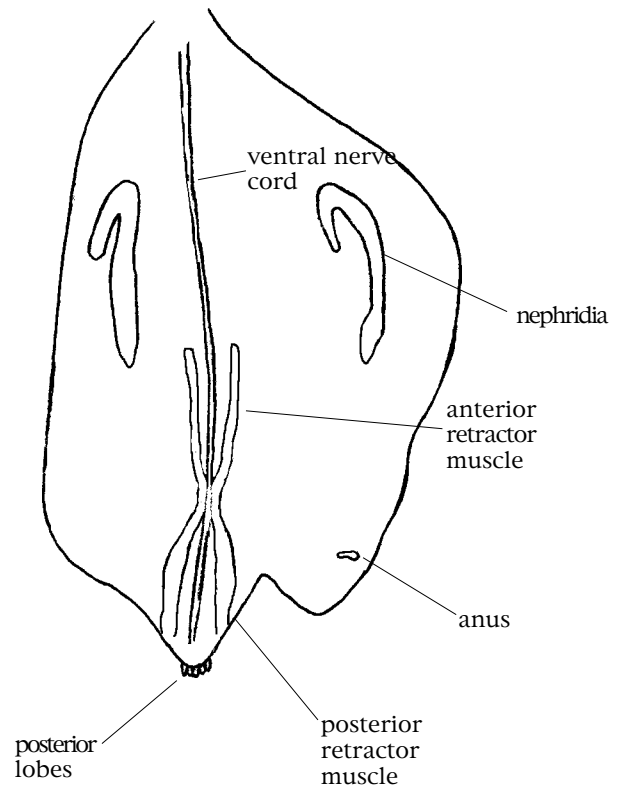
Station	Date	Depth(ft)	
I-20	7/22/97	178	
I-31	1/9/98	62	
I-29	7/9/98	121	

**Storage Location/Voucher#**  
D. Pasko

## Characters:

- Introvert much longer than trunk.
- Two asymmetrical, bilobed nephridia, located towards anterior third of trunk, tan or orange in color, connected to trunk 1/4 to 1/3 from the anterior tip.
- Four retractor muscles (two pair), with the posteriormost pair twice as thick as the anterior and attached to the body very near the posterior end of trunk.
- Anus clearly visible in posterior end of trunk (as light colored raised circular area with pore).
- Papillae absent, or much reduced; few small papillae apparent at posterior end of trunk.
- Posterior tip of trunk often with slightly different coloration (tan or cream colored), and small fringe of multiple lobes.
- Epidermis generally thick and opaque.

## Illustration:



## Related Species:

This species is closely related to *Apionsoma misakianum* (Ikeda, 1904) which differs from *Apionsoma* sp SD1 in the more anterior placement of the retractor muscles and anus (both located mid-trunk), the equally thin sets of retractor muscles, the presence of numerous, small dark papillae posteriorly on trunk, and the thinner, more translucent epidermis. Additionally, I have yet to see specimens of *A. misakianum* with lobes at the tip of the trunk. All specimens that I have examined have a tapered or rounded posterior end.

This species is closely related to *A. murinae* in thickness of the epidermis, size, placement and thickness of the retractor muscles, and the unequally bilobed nephridia. *Apionsoma* sp SD1 differs in the absence of large papillae.

## Comments:

Both species co-occur, however, *Apionsoma misakianum* is much more common. Where they do co-occur, *A. misakianum* is 10 times more abundant.

*Apionsoma* sp SD1 has not been collected with the introvert fully extended, consequently details of related characters (e.g., tentacle arrangement, introvert hooks, etc.) are unavailable.

## References:

- Cutler, E.B. 1979. A reconsideration of the Sipunculid taxa *Fisherana* Stephen, *Mitosiphon* Fisher and *Apionsoma* Sluiter. Zool. J. Linn. Soc. Vol 65 (4): 367-384.
- Cutler, E.B. 1994. The Sipunculida: Their Systematics, Biology, and Evolution. Cornell University Press.

(over)

**Species:** *Apionsoma* sp SD1

**Taxon:** Sipunculida: Phascolosomatidae

**Date:** 20 December 1997

**Additional Illustrations:**

*Apionsoma* sp SD1



***Apionsoma murinae* (Cutler 1969)**  
(from Cutler 1979, Fig. 1)

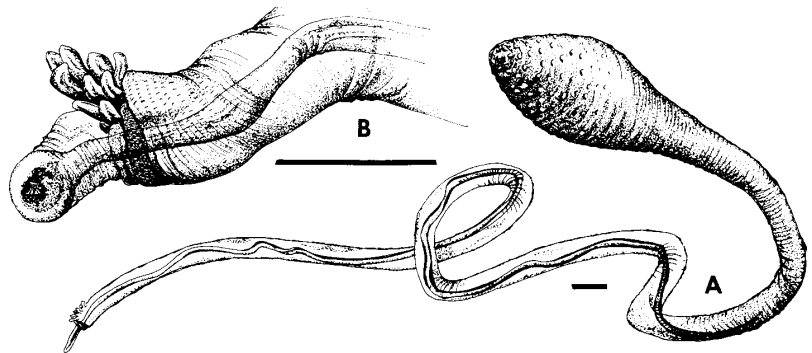


Figure 1. *Golfingia murinae*. A. Whole animal (scale 1 mm). B. Tip of introvert with oesophagus protruding through mouth ventral to tentacles (scale 1 mm).

**Distribution—**

**Pt. Loma:**

**Geographic:** Imperial Beach, CA

**Habitat:** 20 - 100 m., shallow silty sands, sandy sediments

