 Golfingia misakiana (Ikeda, 1904)  
Golfingiidae

Vol. 4, No. 10

---

SCAMIT Code: LACO 64  
SCCWRP65

Date Examined: Dec. 5, 1985  
Voucher by: Bruce Thompson, SCCWRP

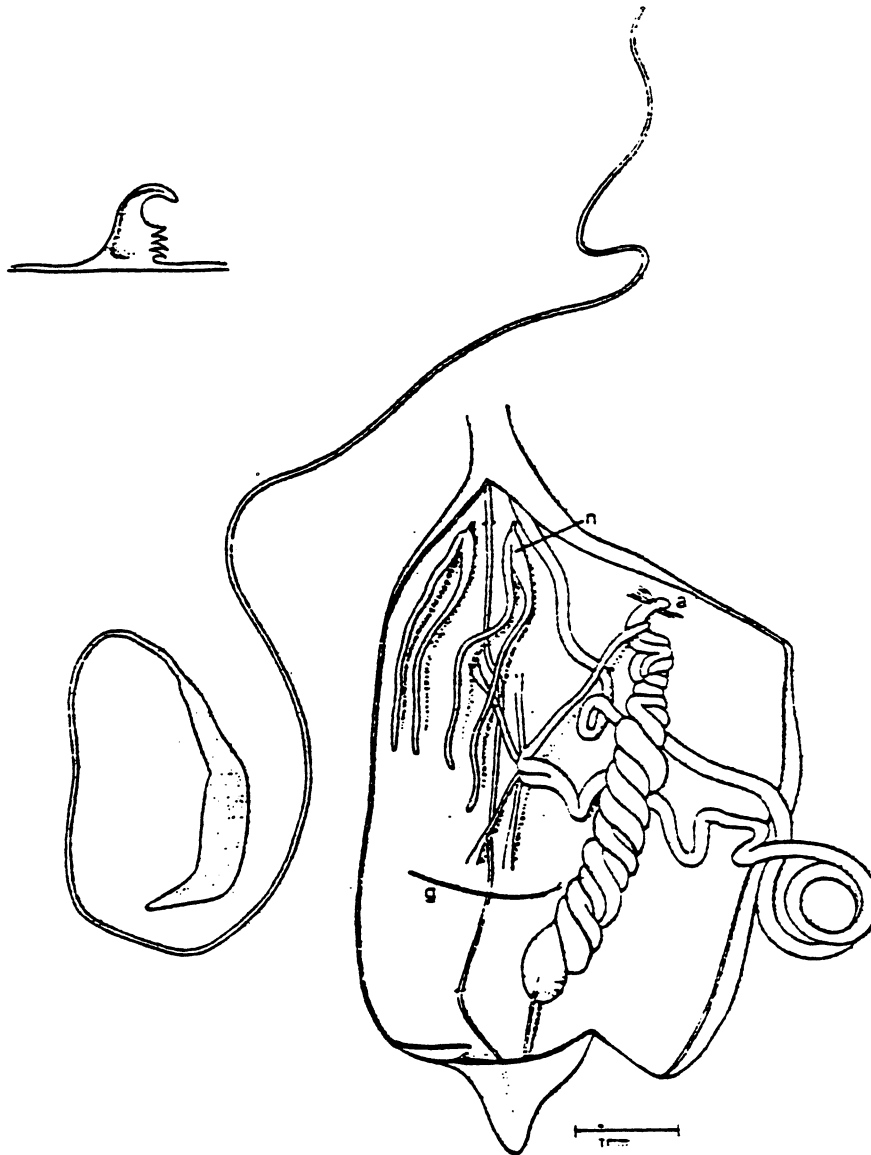
SYNONYMY: Phascolosoma hespera Chamberlain, 1920  
Golfingia hespera Fisher, 1952

LITERATURE: Cutler, 1979.  
Cutler, 1973.

DIAGNOSTIC CHARACTERS:

1. 2 pairs of retractors.
2. 2 bilobed nephridia.
3. Introvert 10-12 times trunk length.
4. Tentacles, hooks and papillae present on introvert.

DISTRIBUTION: Cosmopolitan



1. Golfingia misakiana; introvert hook, whole organism and internal anatomy. n=nephridia, a=anus, g=gut fastening muscle (from Stephen and Edmonds, 1972).