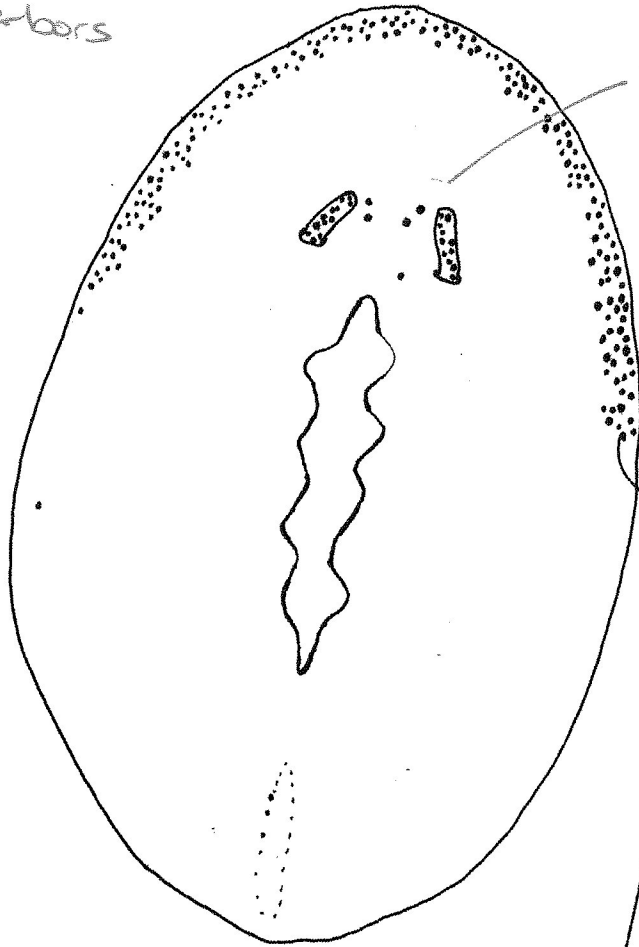


Stylochus franciscanus Hyman 1953

- marginal eyes only go half way
- thick
- mesal tentacles emergent
- eyes evident in tentacles even non-cleared
- bays + harbors



only a few cerebral
vs. Enigmus -
more C. eyes

Cerebral eyes -
close to tentacles

in Enigmus
cerebral eyes
& more anterior
from tentacles

9 mm
marginal eyes -
numerous &
consistent.

- * tan-brown to reddish brown
- * very thick