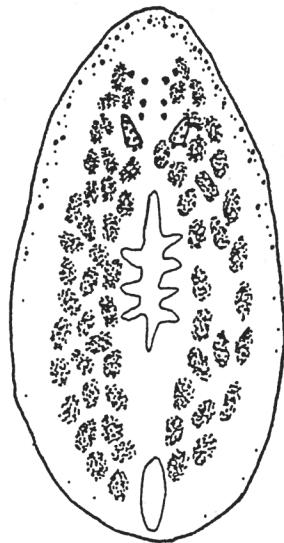
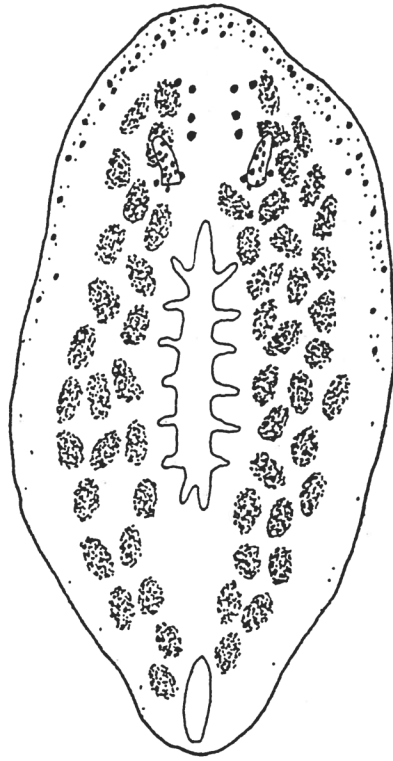


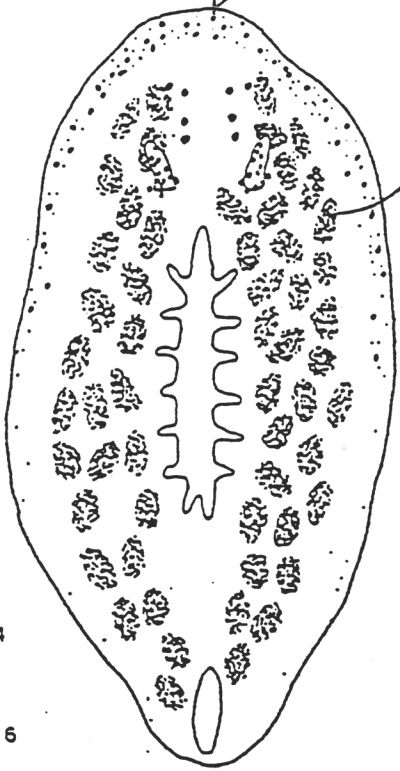
Stylochus exiguus
(= *Imogine exiguus*)



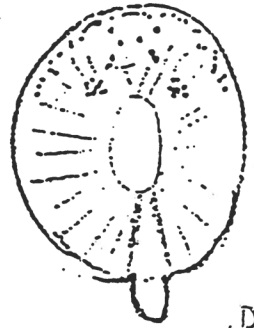
* with tentacles emergent
cleared

IF marginal eyes are present, see Polycladida sp A of Phillips

3. *Imagine* **STYLOCHUS EXIGUUS**
(= Polycladida sp (E + I of MBC + SP P) (Sometimes orange in color) ^{Avett 1980}
Polyclad sp C + F of Phillips 1980



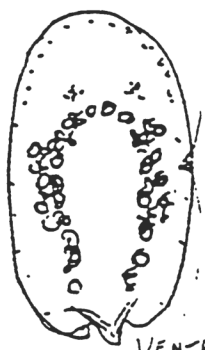
B L = 4.2 mm
W = 2 mm



L = 2 mm

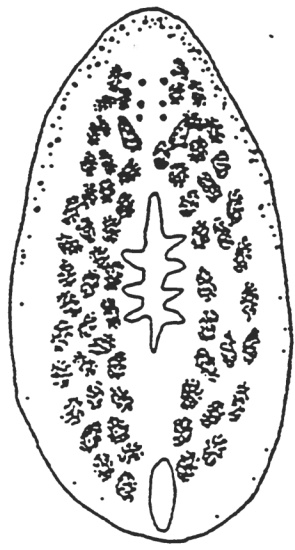
DORSAL

D

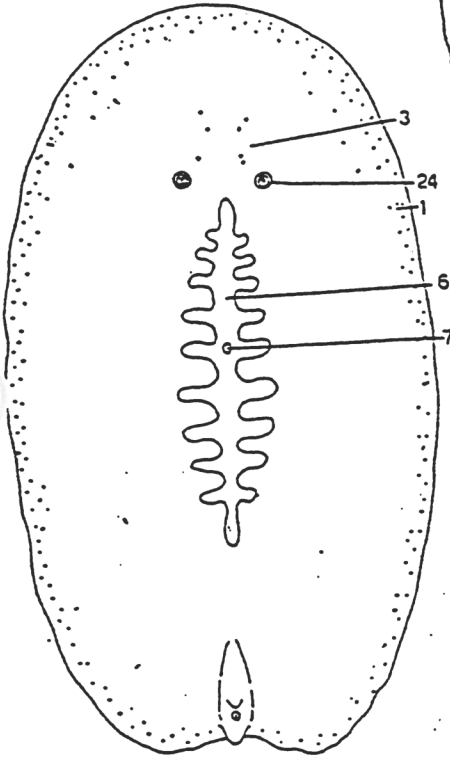


VENTRAL

E



C L = 3.8 mm
W = 1.8 mm



A
L = 7 mm
W = 4 mm

SURFACE PIGMENT