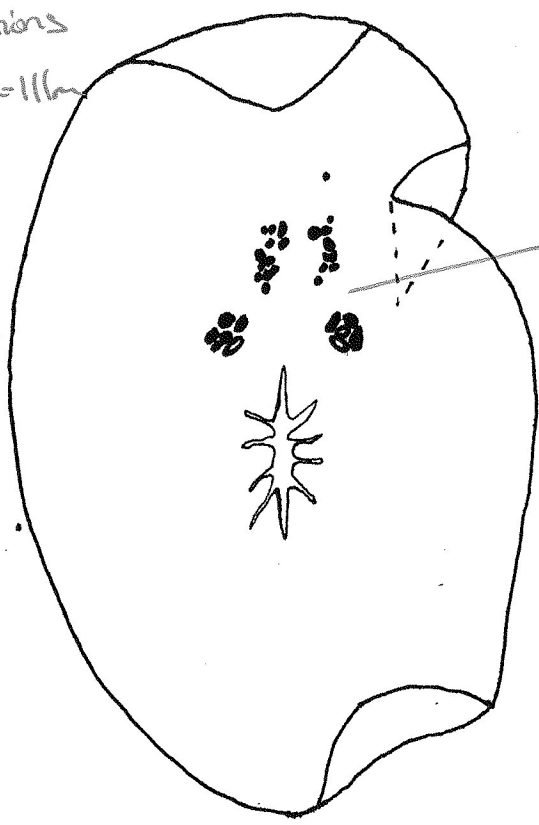


(= Notoplana) rupicola (Heath & McGregor 1912)

Noto complana

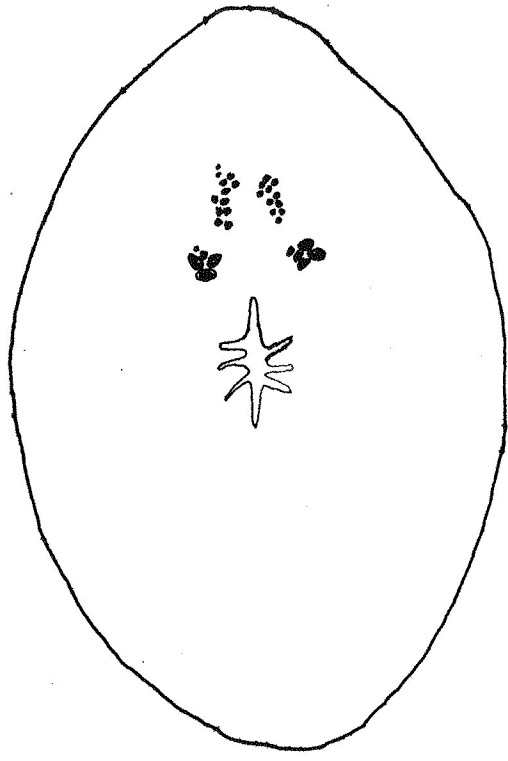
- thin
- deep water
- multi. - 100m stations
- Shallowest Tony saw = 116m
- no pigment on most; 1 specimen looked like it might have had brown maculations



gap between tent. eyes & cerebral eyes.

4 mm

opaque, thin



3 mm