

Enopla sp B

Enopla sp. B SCAMIT 1995
Group: Nemertea: Anopla

SCAMIT Vol. 14, No. 7

SCAMIT CODE: None

Date Examined: 8 November 1995

Voucher By: Dean Pasko

SYNONYMY:

LITERATURE: Coe, W. R., 1940. Revision of the nemertean fauna of the Pacific coasts of North, Central, and northern South America. Allan Hancock Pacific Expeditions. 2 No. 13: 247-323.

Blake, J. A. and A. L. Lissner, 1993. Taxonomic Atlas of the Benthic Fauna of the Santa Maria Basin and Western Santa Barbara Channel. Volume 1. Introduction, Benthic Ecology, Oceanography, Platyhelminthes and Nemertea.

DIAGNOSTIC CHARACTERS:

1. Body somewhat elongate, thick, tapered at both ends.
2. Color white without other markings.
3. Eyes absent.
4. Proboscis unarmed.
5. Cerebral ganglia large (dumbbell-shaped).

RELATED SPECIES AND CHARACTER DIFFERENCES:

None known. At first glance this species has the general appearance of a Polyclad flatworm.

DEPTH RANGE: 90-120 m

DISTRIBUTION: Found off Point Loma, California in silty sediments at shelf depths.

F-5 (2) Jan 2010

1 specimen w/ armed stylet apparatus



Enopla

Anopla sp. B SCAMIT 1995

Group: Nemertea: Anopla

SCAMIT Vol. 14, No. 7

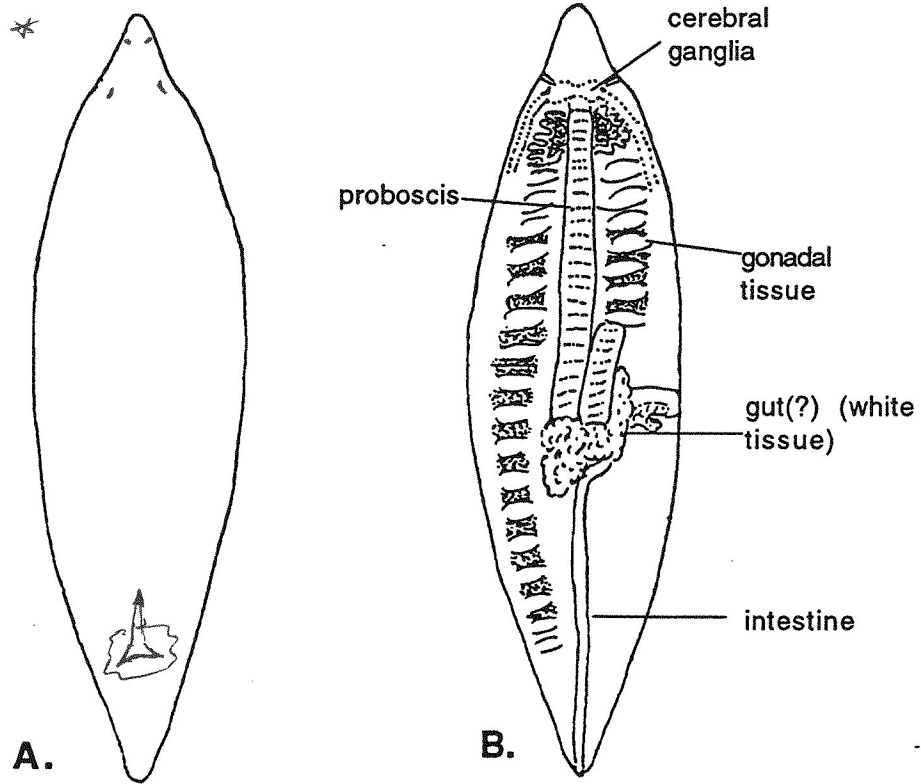


Figure 1. *Anopla* sp. B: A. whole animal, dorsal view; B. whole animal cleared, dorsal view.

* I-1(1)
3 Jan 11
63m
- specimen w/ 2 pss eyes
and stylet