

SYNONYMY: Enopla sp 1 Pasko 2019

LITERATURE:

Coe, W.R. 1905. Nemerteans of the west and northwest coasts of America. Bulletin of the Museum of Comparative Zoology, 47: 1–319

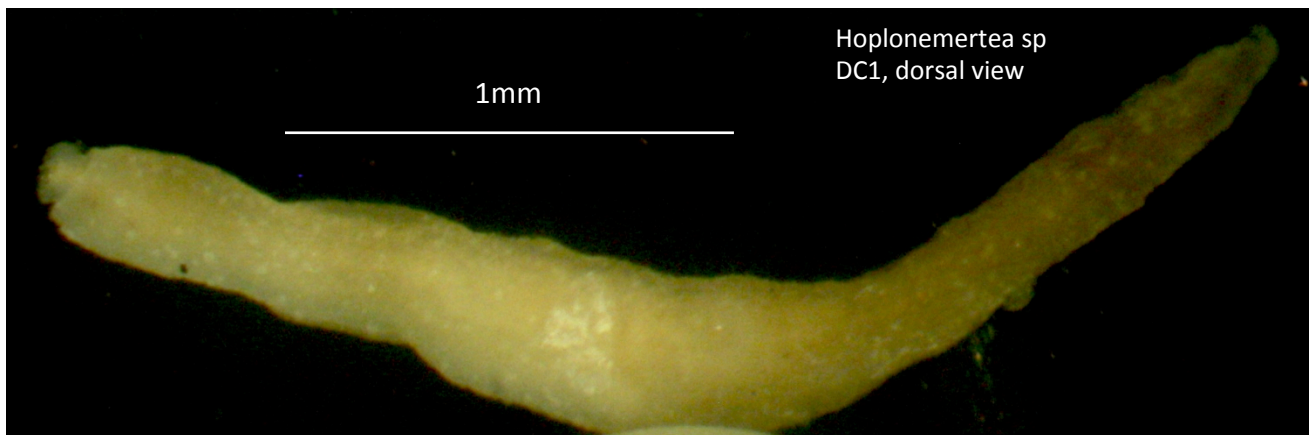
Coe, W.R. 1940. Revision of the Nemertea fauna of the Pacific coasts of North, Central and northern South America. Allan Hancock Pac. Exped. 2(13): 247–323.

DIAGNOSTIC CHARACTERS (from a single specimen, Bight'18, Statino 10438, 3.3m)

- Small species, 2.3mm long, with roughed epidermis
- Eyes 3 pairs of closely set, crescent-shaped eyes anteriorly plus a fourth(?) pair adjacent to brain
- Proboscis sheath approximately $\frac{1}{2}$ the length of the body
- Stylet apparatus located mid-body; stylet subequal to or slightly longer than basis; basis slightly broadened in mid-region and narrowed at its base, which is flat and narrower than proximal end (at insertion of stylet)
- Accessory pouch with a single accessory stylet present

Similarities:

- Differs from all currently recognized enoplans in the roughend epidermis and fairly distinctive stylet apparatus.



Hoplonemertea sp
DC1, dorsal view,
cleared

Hoplonemertea sp
DC1, dorsal view,
anterior cleared

Stylet apparatus

accessory stylet

Stylet apparatus

Hoplonemertea sp DC1, Stylet
aparatus (below) with
accessory stylet (above)