

SCAMIT CODE: None

Date Examined: 27 October 1995

Voucher By: John Ljubenkov & Dean Pasko

SYNONYMY: *Tetrastemma* nr. *candidum* of MEC and CSDMWWD

LITERATURE: Coe, W. R., 1940. Revision of the nemertean fauna of the Pacific coasts of North, Central, and northern South America. Allan Hancock Pacific Expeditions. 2 No. 13: 247-323.

Blake, J. A. and A. L. Lissner, 1993. Taxonomic Atlas of the Benthic Fauna of the Santa Maria Basin and Western Santa Barbara Channel. Volume 1. Introduction, Benthic Ecology, Oceanography, Platyhelminthes and Nemertea.

DIAGNOSTIC CHARACTERS:

1. Body generally short, plump and without pigment (white).
2. Four crescent shaped rose-colored eyes with posterior pair facing posteriorly.
3. Proboscis sheath $2/3-3/4$ the length of body.
4. Proboscis armature consists of short stylet ($\leq 1/5$ of basis length) and cylindrical basis expanded and flattened posteriorly.

RELATED SPECIES AND CHARACTER DIFFERENCES:

1. *Tetrastemma candidum*: Color gray, yellow, green or brownish green; stylet only slightly shorter than hourglass-shaped basis (cylindrical, constricted in middle, with round end) (See Figure 2).

DEPTH RANGE: intertidal to 150 m

DISTRIBUTION: Southern California Bight

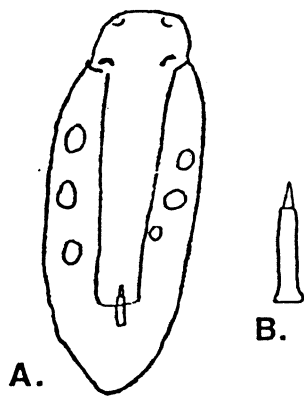


Figure 1

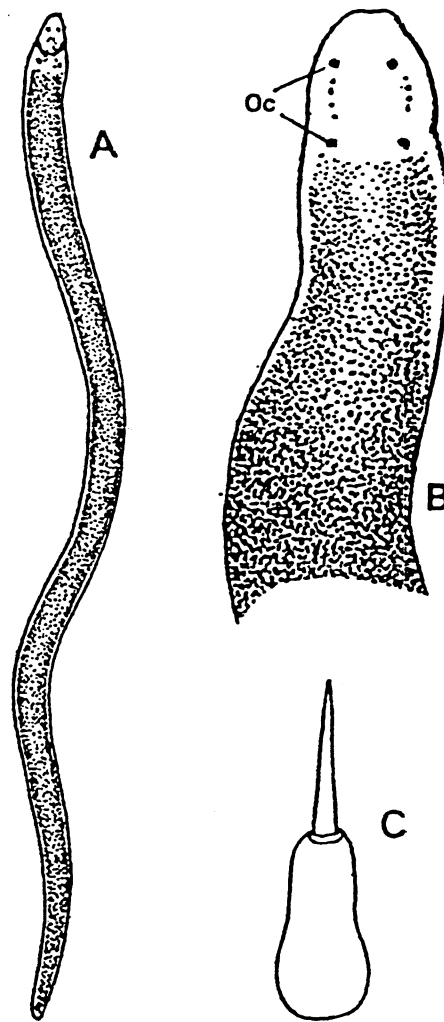


Figure 2

Figure 1. *Tetrastemma* sp. A SCAMIT: A. entire animal cleared; B. entire specimen, cleared; C. stylet apparatus.

Figure 2. *Tetrastemma candidum*: A. entire animal, dorsal view; B. anterior end, dorsal view; C. stylet apparatus. (From Blake and Lissner, 1993.)